

A vibrant, cartoon-style illustration of a child's room. At the top, a string of yellow and blue pennant flags hangs across the room. In the center, a wooden desk holds a yellow bowl, a blue box, a pink ball, and some books. To the left, a round pink table with orange legs has a green cup of pens and markers on it. A wooden chair with a blue seat is to the left of the table. In the foreground, a blue monkey sits on a green stool, and a brown teddy bear sits on the floor near a green blanket. A window on the right shows a bright outdoor scene. The floor is brown with a dark brown rug under the table.

Welcome!

LV1 U1 L1



Hello!



How are you?



I'm fine!



Hello, Teacher!



At School

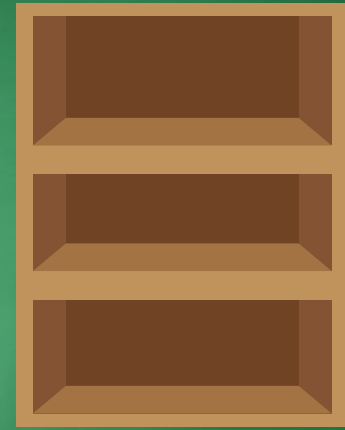
In this lesson:



chair



desk



shelf

What is it? It is a (desk).





Hi,
friend!

This is our
classroom!

**Hello,
students!**

**Hi,
Teacher!**

**Hello,
Teacher!**

desk

It is a desk!



Have the student say "desk" and circle the desk.





Desk!

It is a
desk!

Have the student
say "desk" and
circle the desks.





What is it?

It is a desk!

A desk!

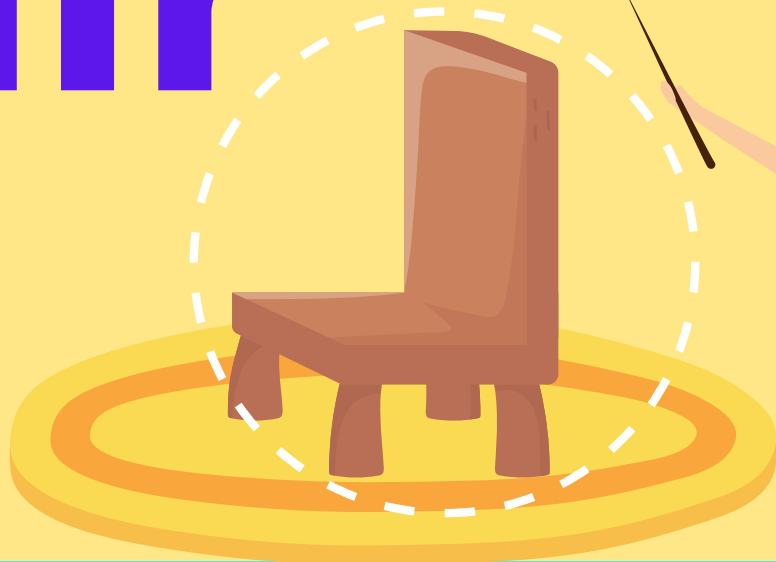
Have the student circle the desk and say: "It is a desk!"



chair

It is a
chair!

Have the student
say "chair" and
circle the chair.



Chair!

**It is a
chair!**

Have the student
say "chair" and
circle the chairs.



A teacher with brown hair, wearing a light blue shirt and a brown skirt, stands on the left. She is holding a stack of books and pointing with a thin stick towards a brown wooden chair in the center. The chair is on a yellow circular base and is surrounded by a dashed white circle.

What is
it?

A chair!

Two children, a girl and a boy, stand on the right. The girl has brown hair and is wearing a yellow shirt with a heart and a teal skirt. The boy has dark hair and is wearing a teal shirt. Both are smiling broadly. A red crayon is shown in a red-bordered box in the bottom right corner.

It is a
chair!

Have the student
circle the chair
and say: "It is a
chair!"

shelf

Have the student say "shelf" and circle the shelf.



It is a shelf!



A shelf!



It is a shelf!



Have the student say "shelf" and circle the shelf.





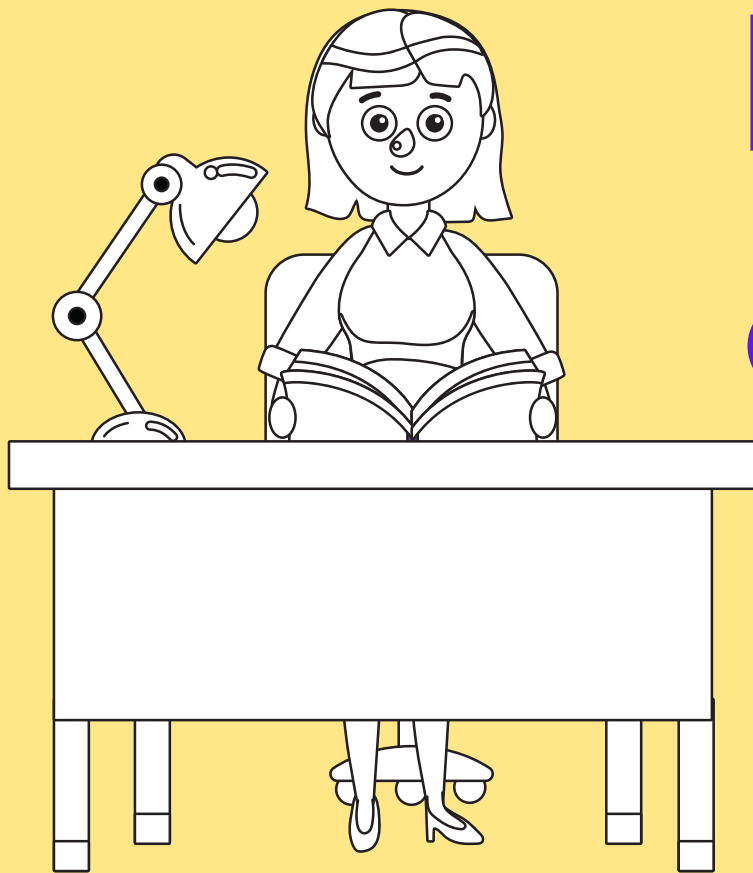
What
is it?



It is a
shelf!

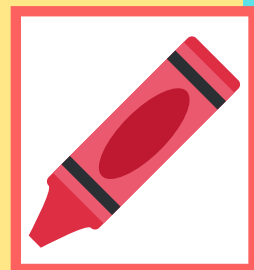
Have the student
circle the shelf
and say: "It is a
shelf!"





**It is a
desk!**

Color the desk.
Say the target
sentence.



**It is a
chair!**

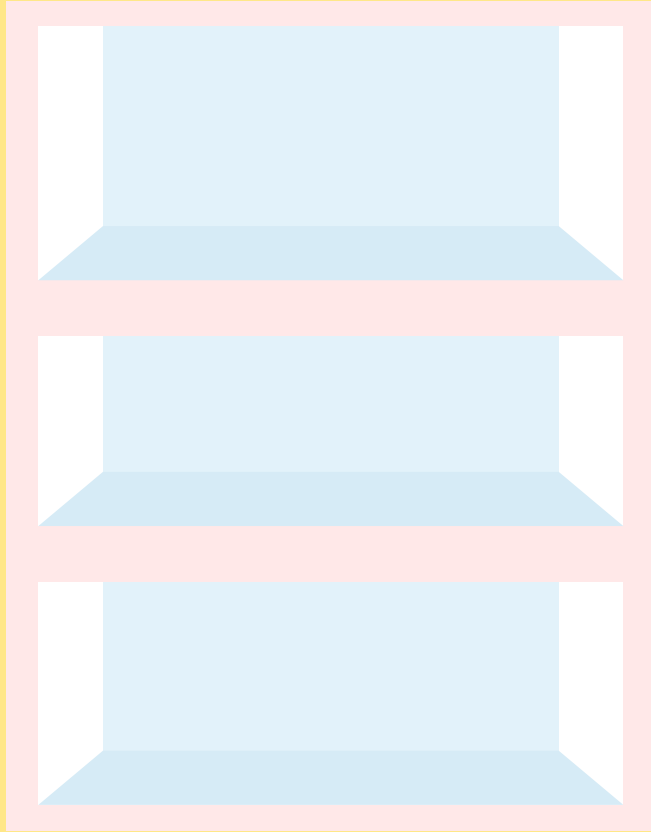


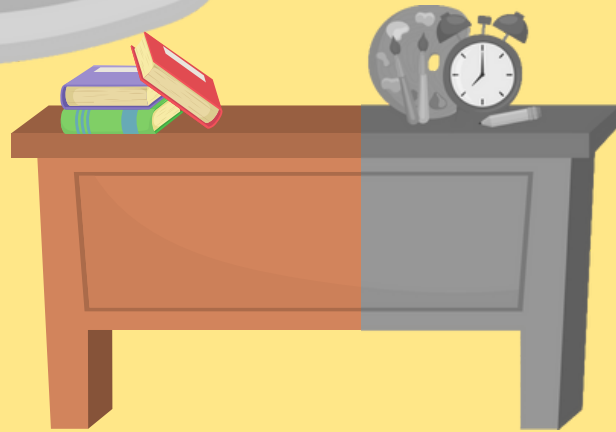
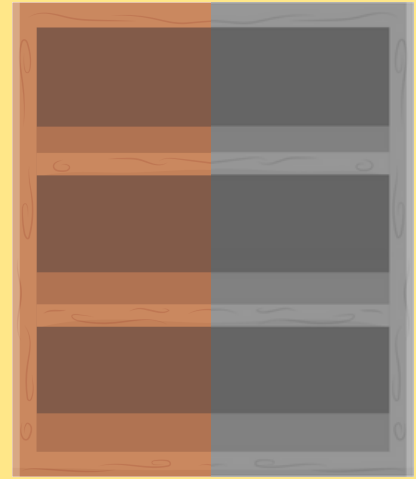
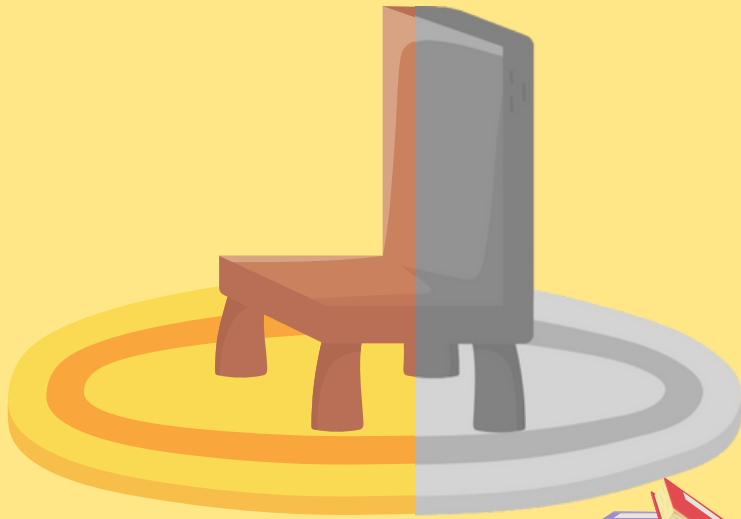
Color the chair.
Say the target
sentence.



**It is a
shelf!**

Color the shelf.
Say the target
sentence.



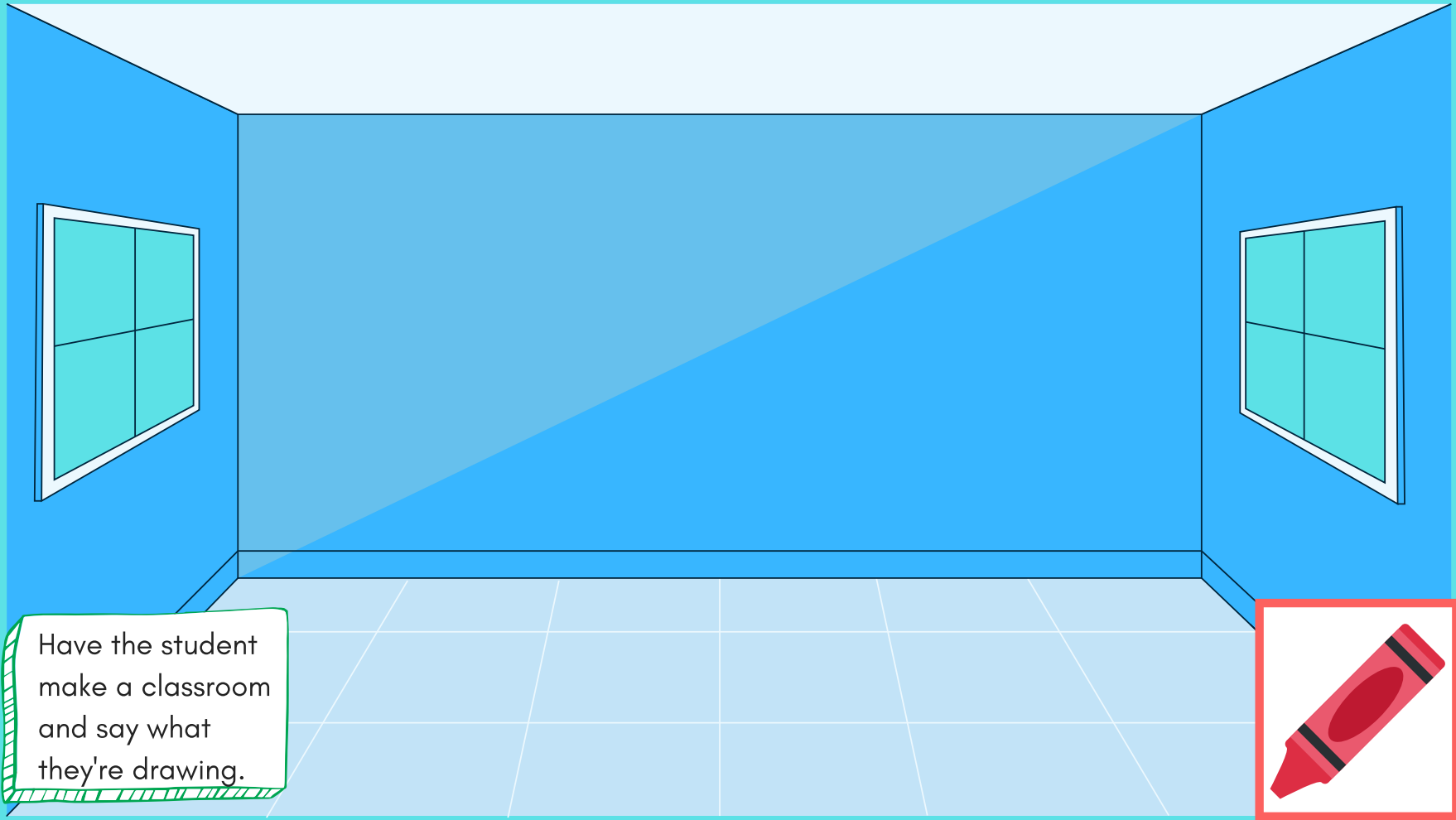


Finish coloring the items and say what they are.



Circle the ____.



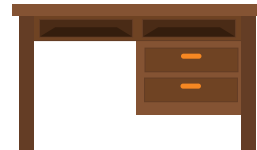


Have the student
make a classroom
and say what
they're drawing.



Draw and say!

Draw a chair, desk, or shelf. Ask the student: "What is it?" Take turns with the student.



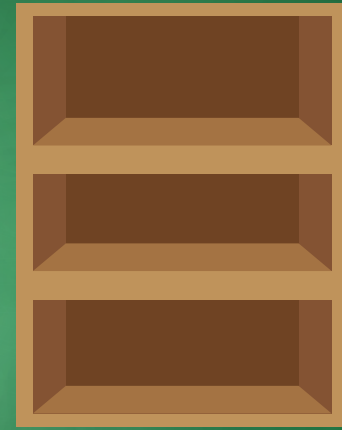
Review:



chair



desk



shelf



What is it? It is a (desk).



Great job!



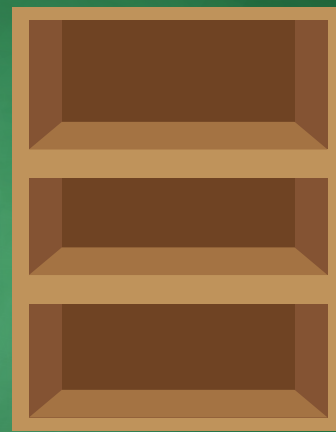
Today you learned:



chair



desk



shelf

What is it? It is a (desk).





Homework!



Option 1) Take a video and show the shelves, desks, and chairs in your home. Use the sentences below to talk about them. Send the video to your teacher.



shelf

Option 2) Draw a picture of what you learned. Then take a video and use the sentences below to talk about what you drew. Send the video to your teacher.



desk



chair

What is it? It is a (desk).

