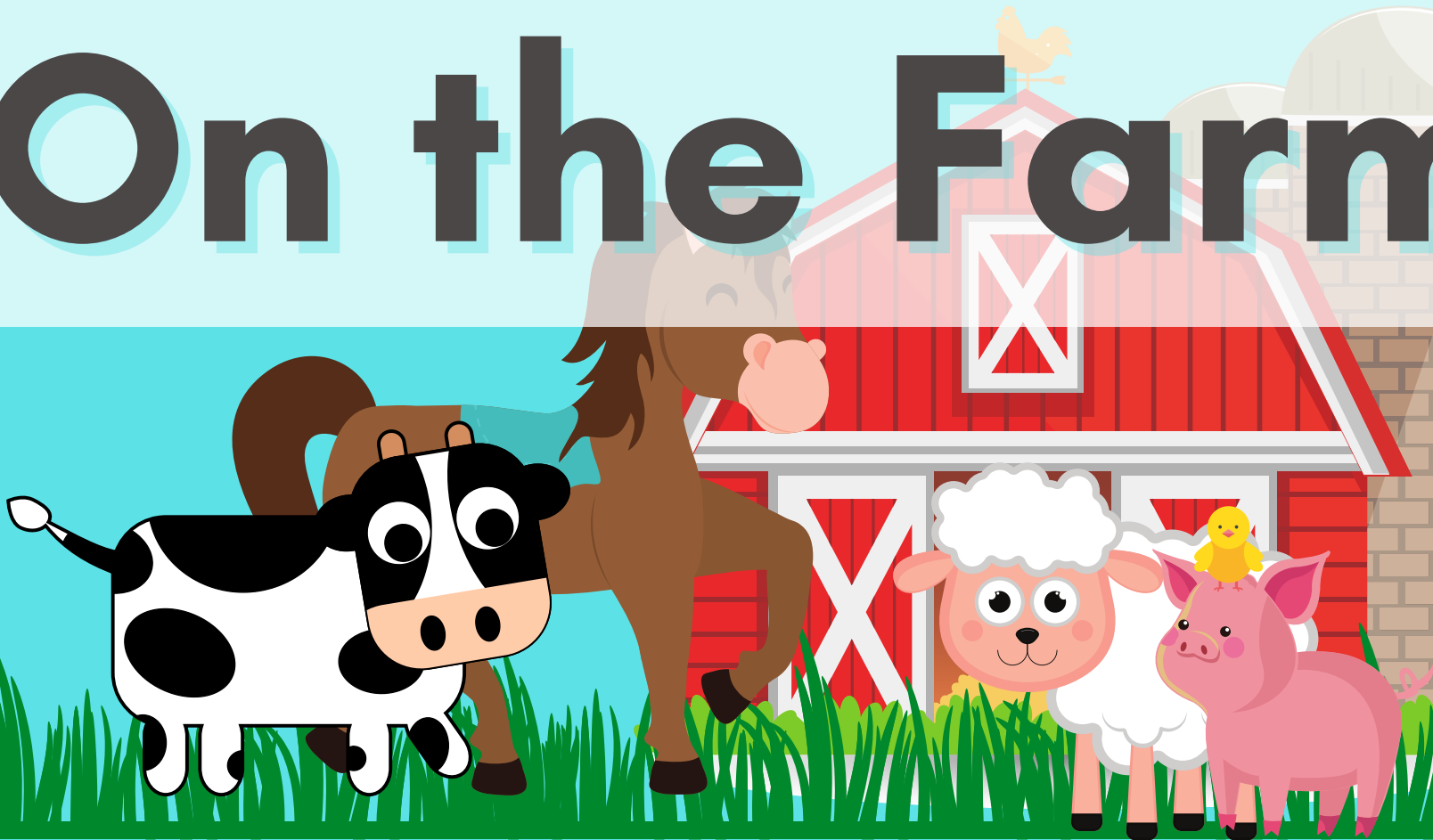




**Welcome!**

LV0 U8 L4

# On the Farm



# In this lesson:

barn



horse



pig



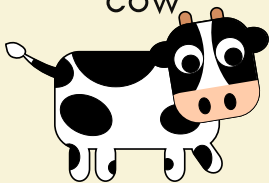
duck



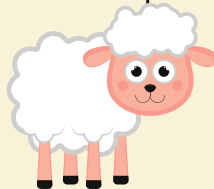
field



cow



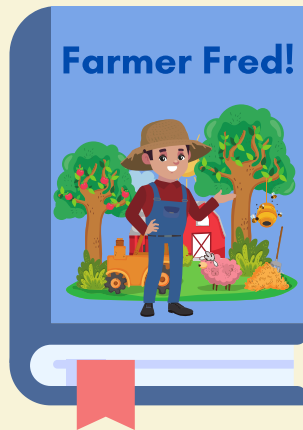
sheep



chicken



Farmer Fred!



What does the horse say? The horse says "neigh!"

What's in the field? A (horse) is in the field!

# Story Time!

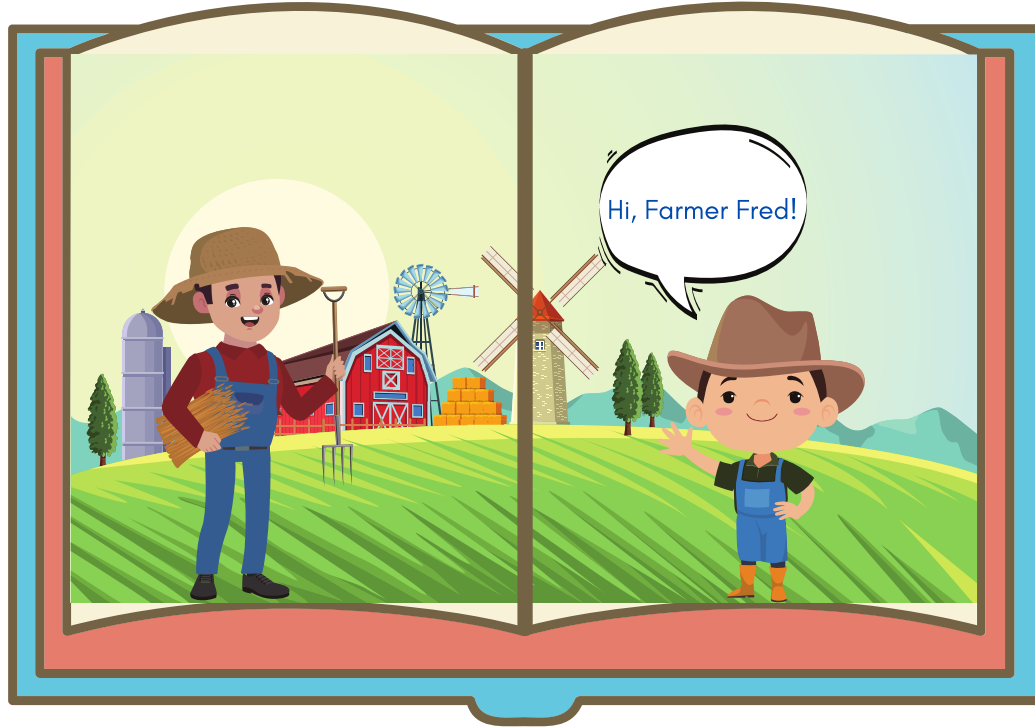




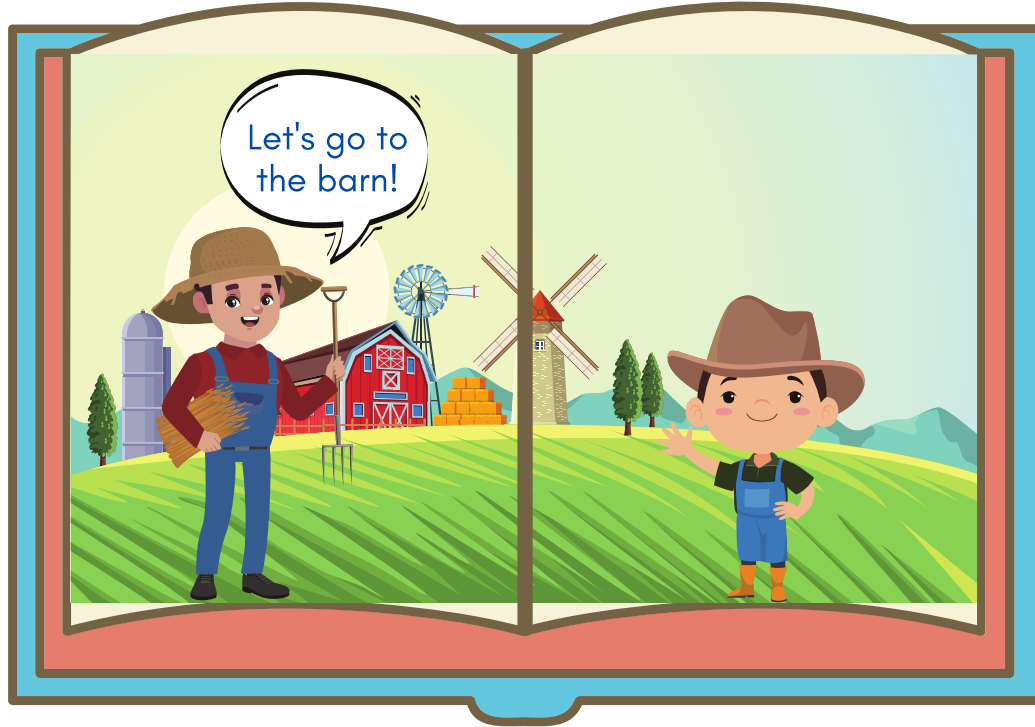
# Farmer Fred!



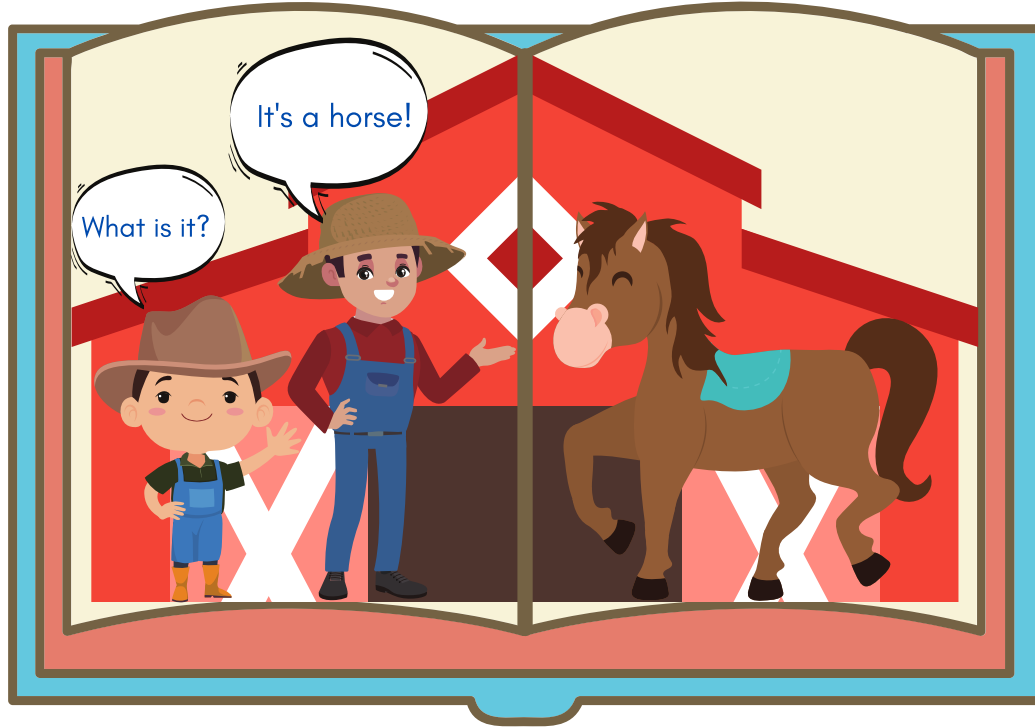
# Hi, Farmer Fred!



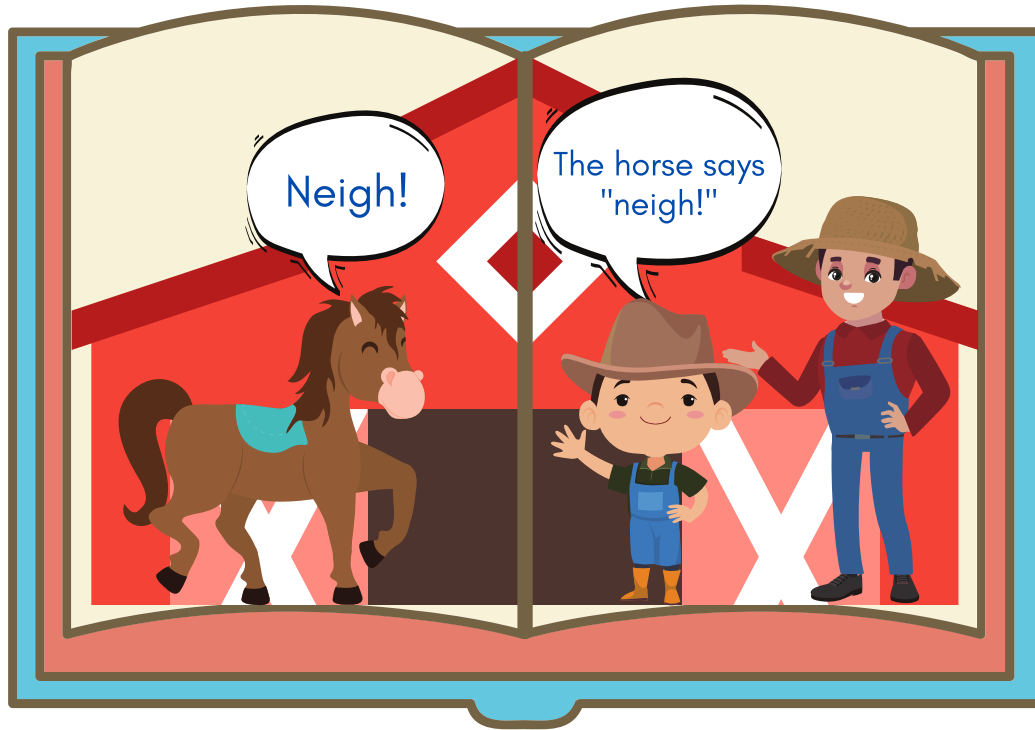
# Let's go to the barn!



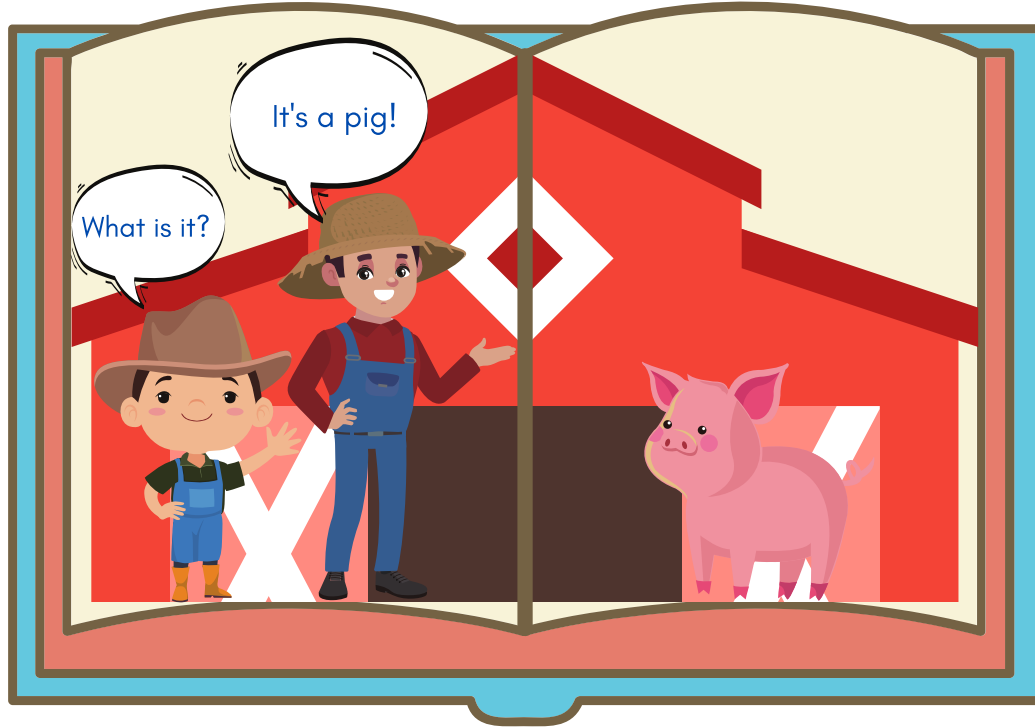
# What is it? It's a horse!



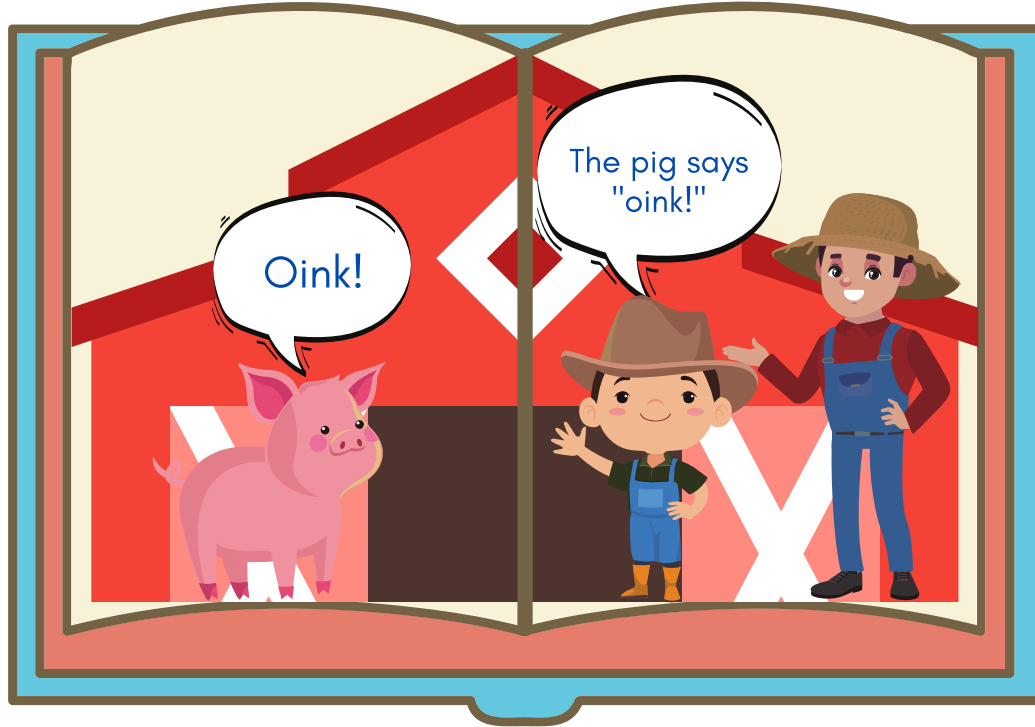
# Neigh! The horse says "neigh!"



# What is it? It's a pig!

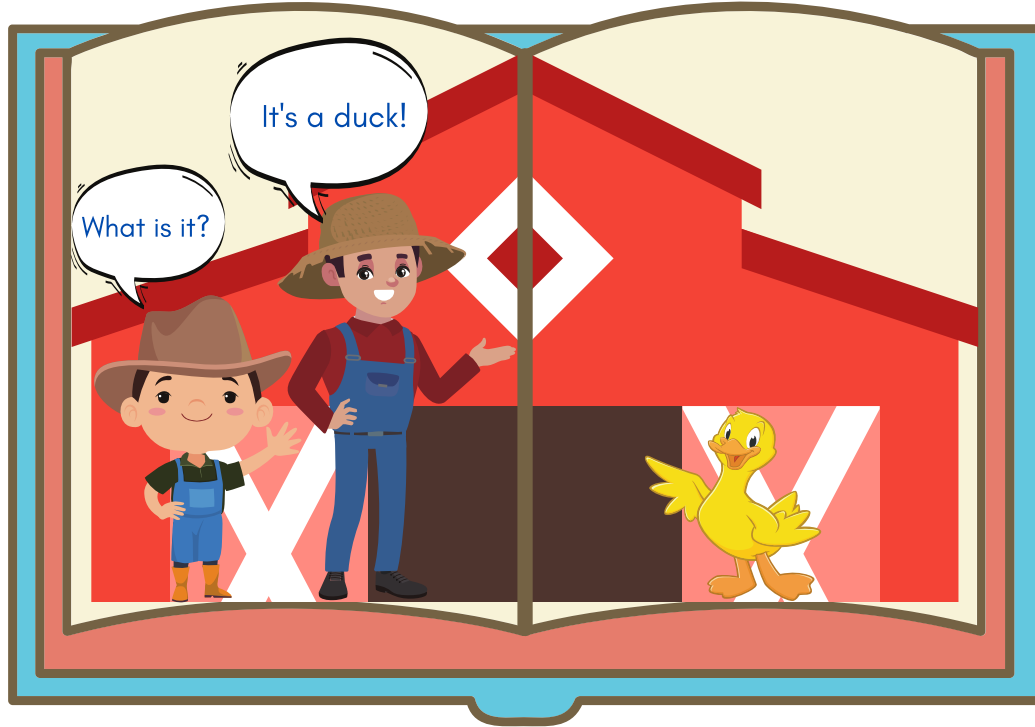


# Oink! The pig says "oink!"

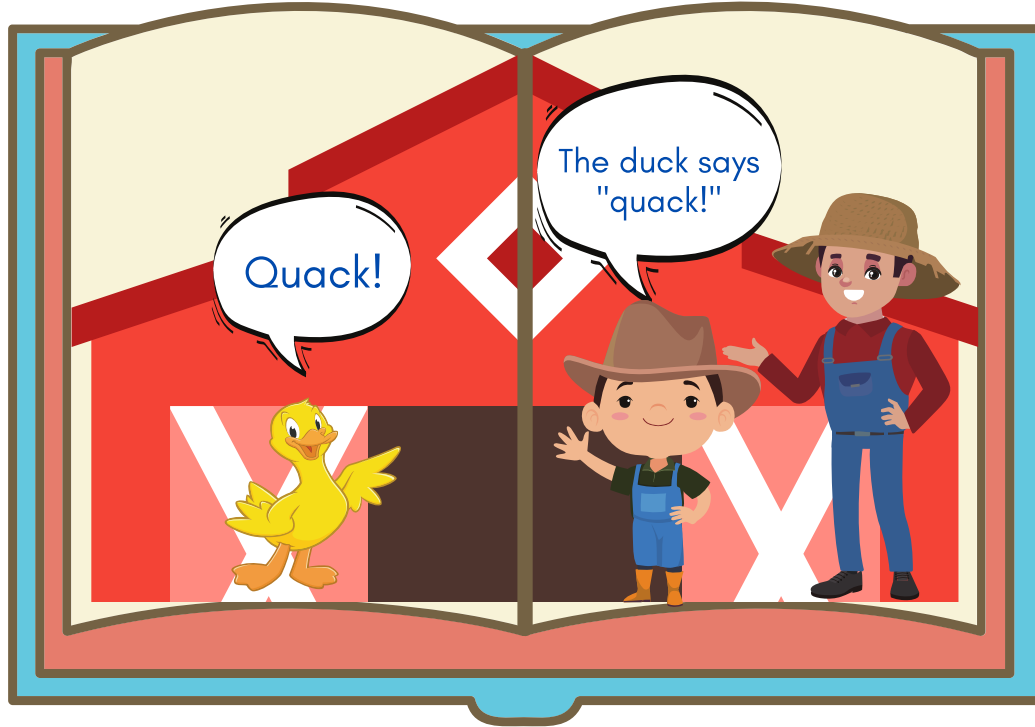




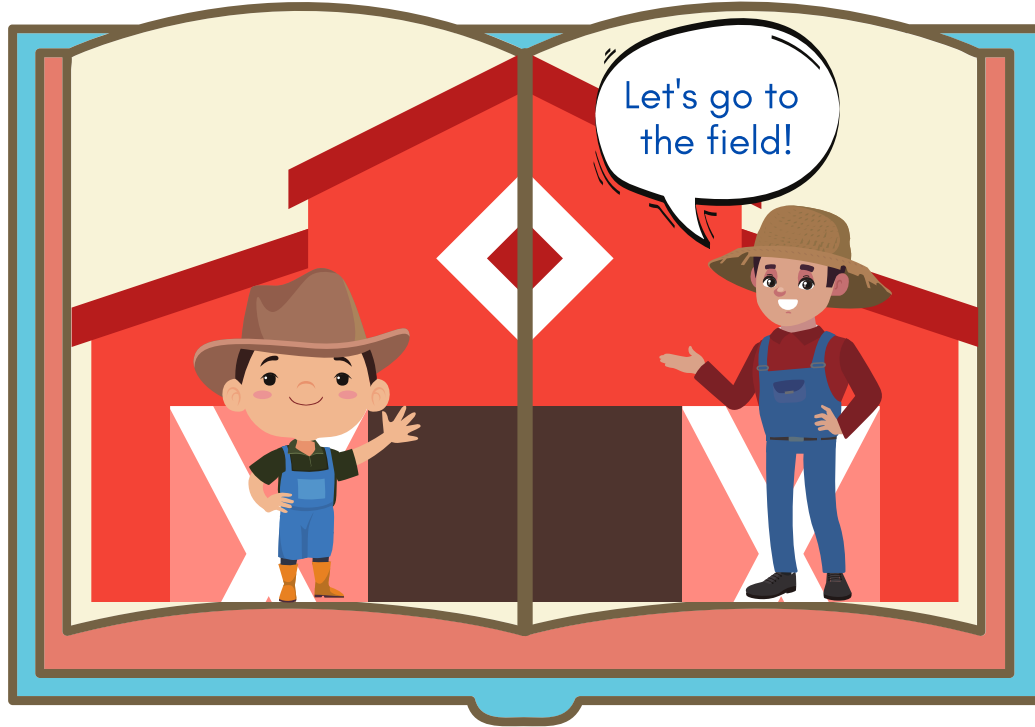
# What is it? It's a duck!



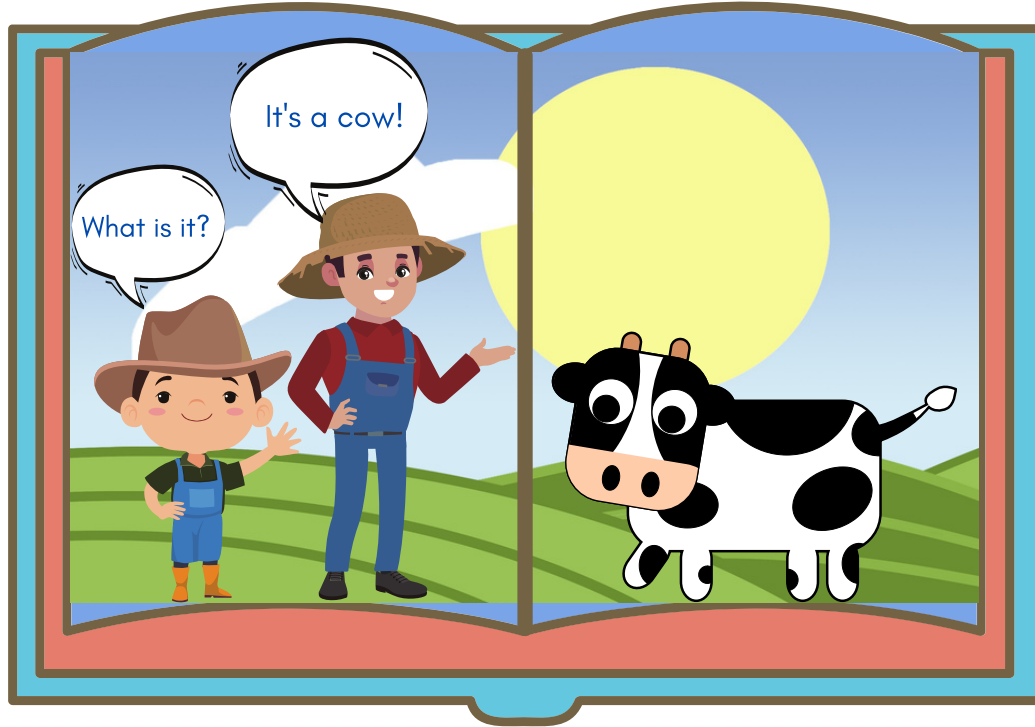
# Quack! The duck says "quack!"



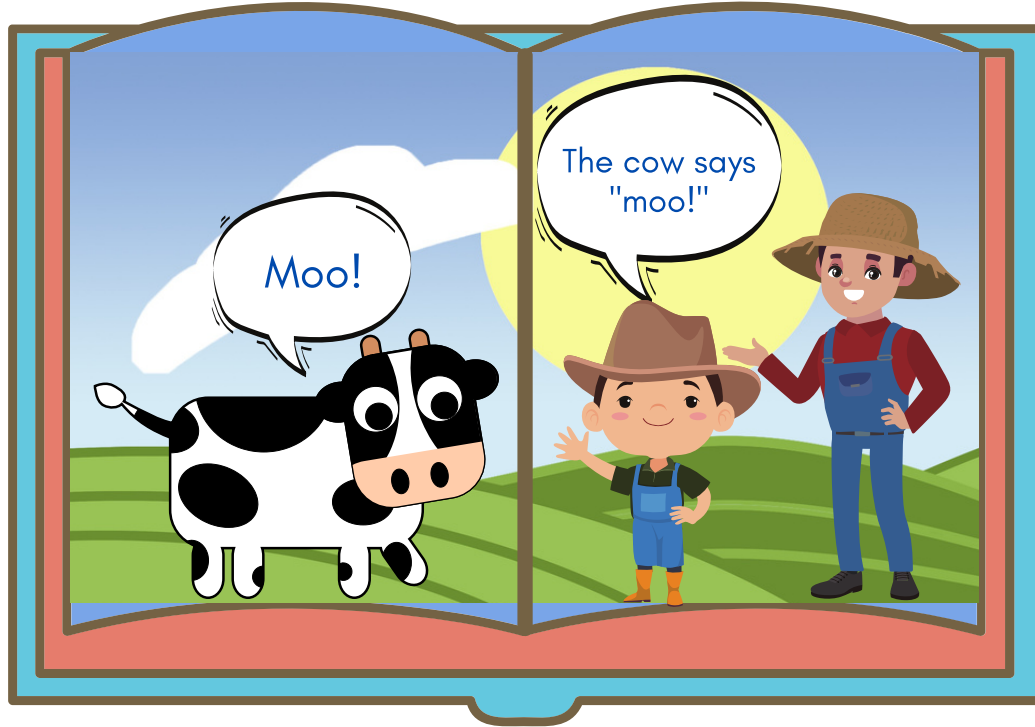
# Let's go to the field!



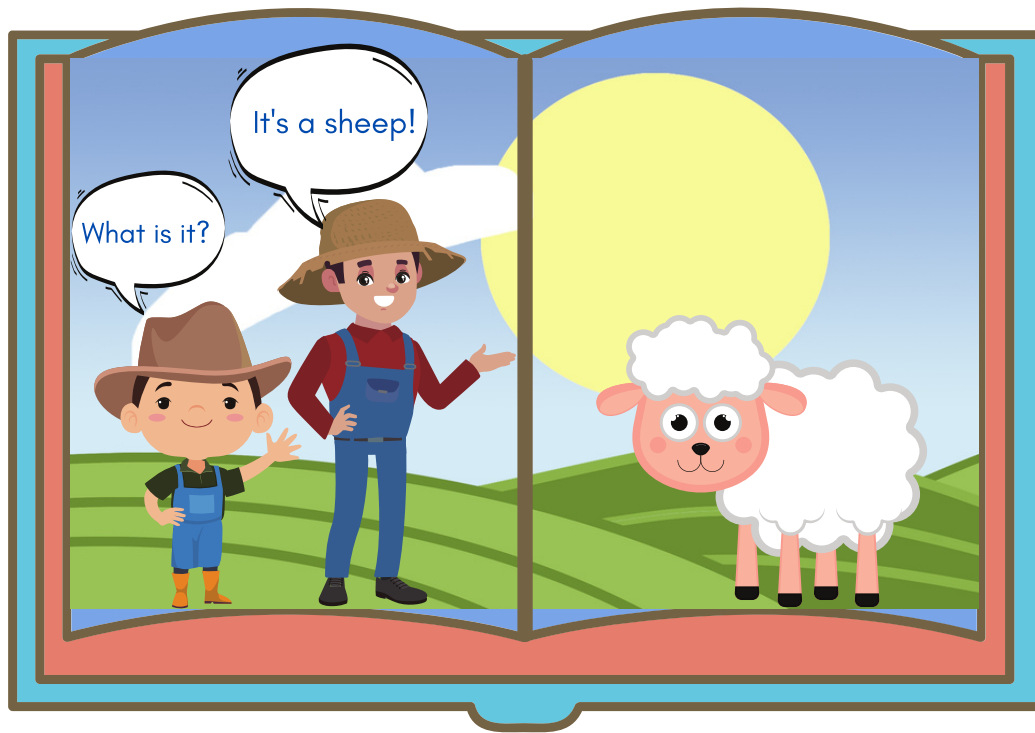
# What is it? It's a cow!



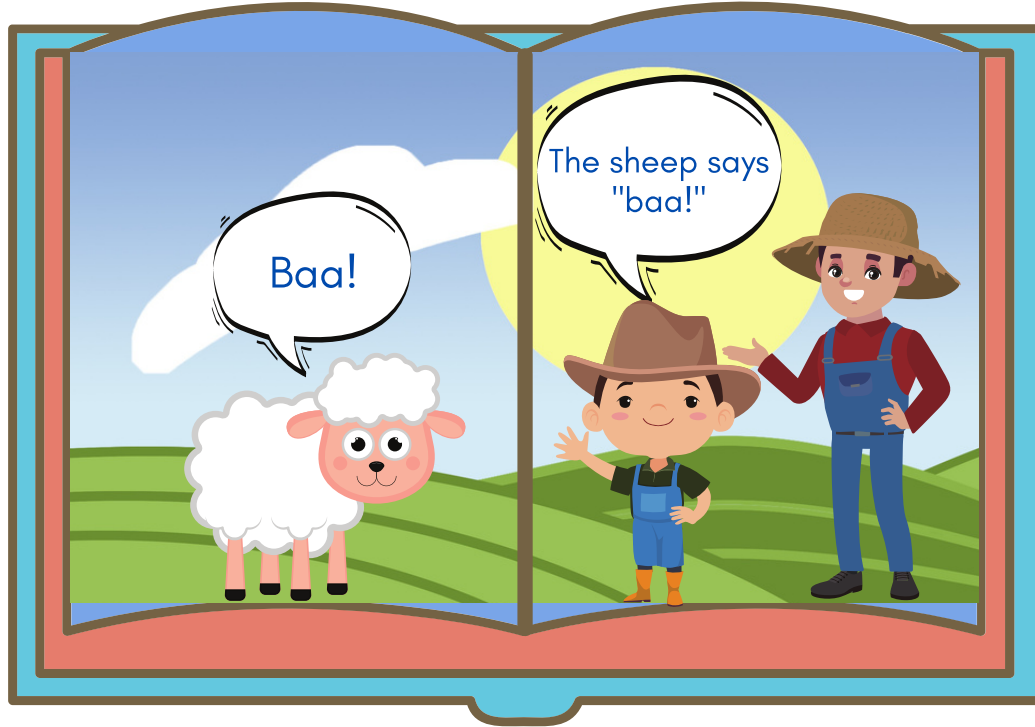
# Moo! The cow says "moo!"



# What is it? It's a sheep!

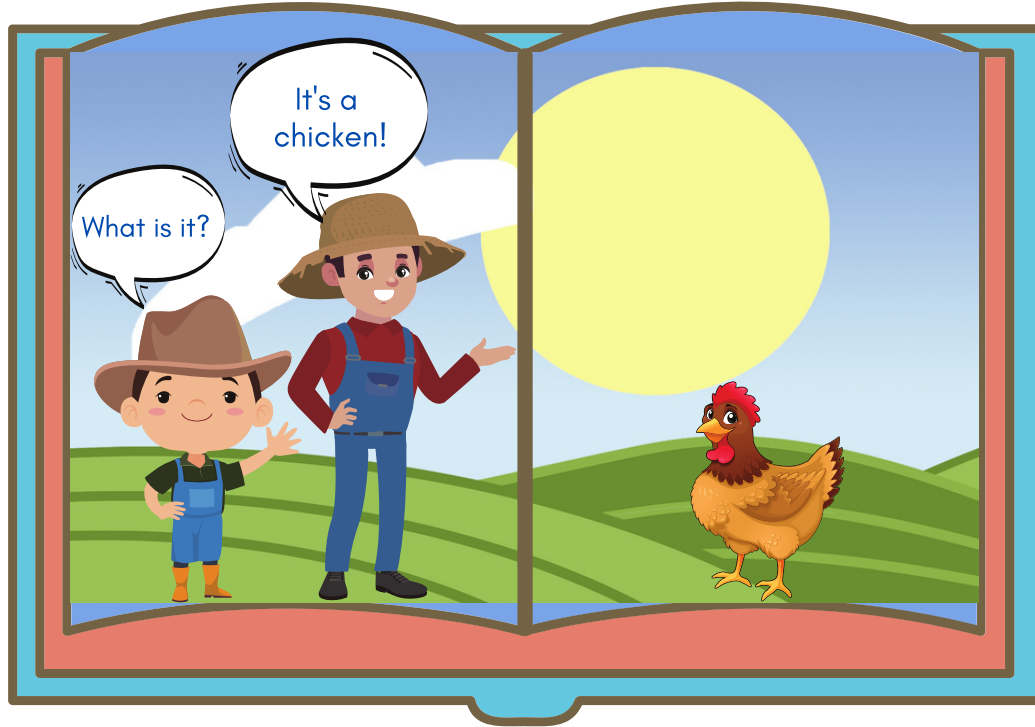


# Baa! The sheep says "baa!"

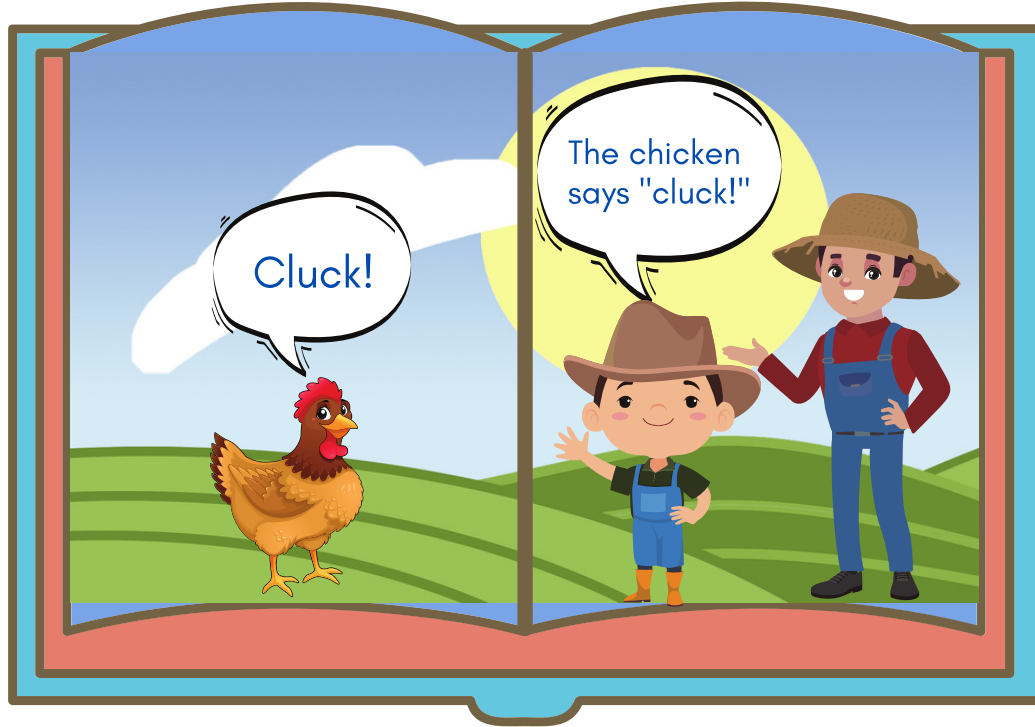




# What is it? It's a chicken!



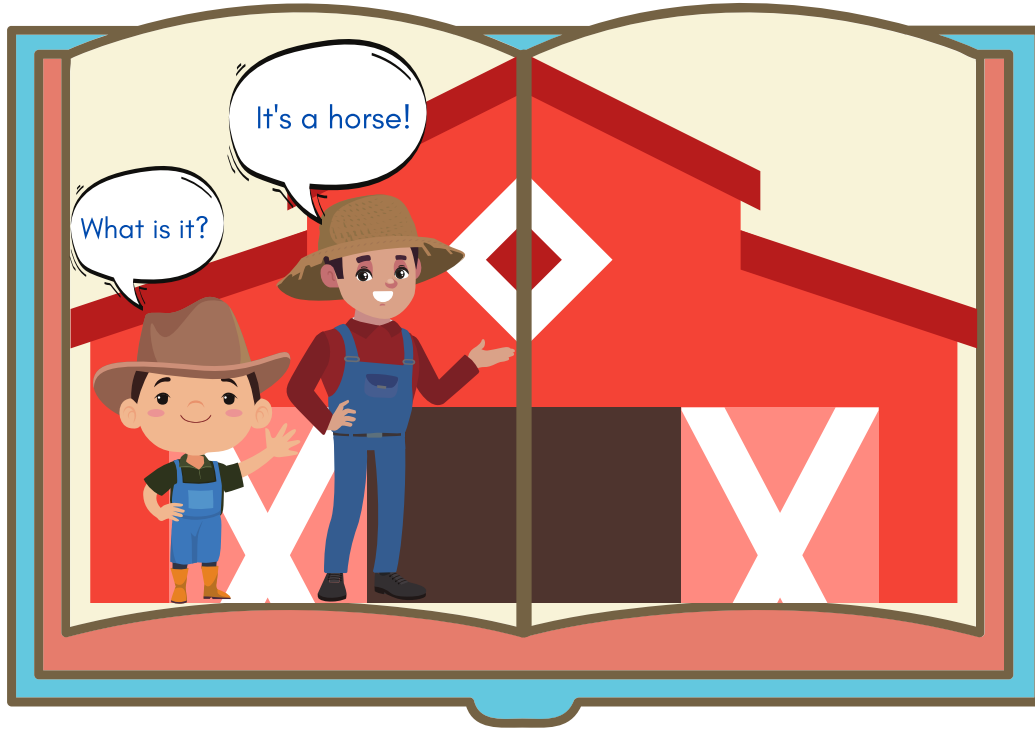
# Cluck! The chicken says "cluck!"



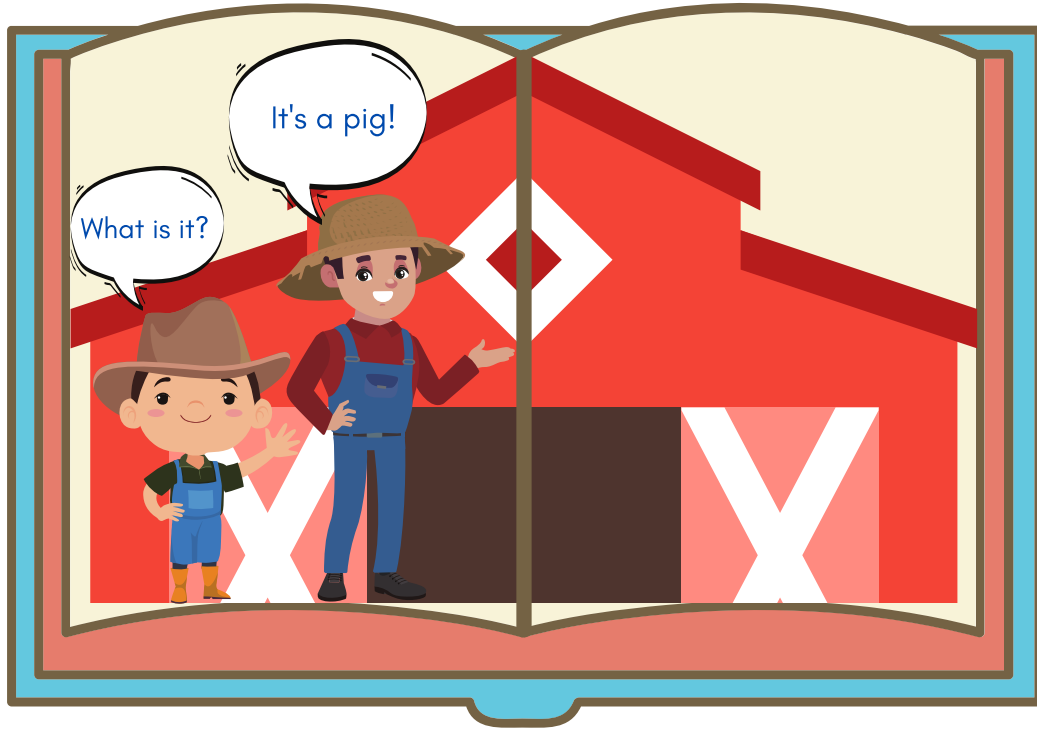
A stylized illustration of a library. In the foreground, a large blue book is centered, with the words "The End" written in a bold, dark blue font. The book has a red bookmark sticking out from the bottom. Behind the book, there are three shelves of bookshelves filled with colorful books. The shelves are a dark purple color. In the foreground, there are two dark grey chairs and a dark grey table. The background is a light purple color. The entire scene is set against a light blue background.

**The  
End**

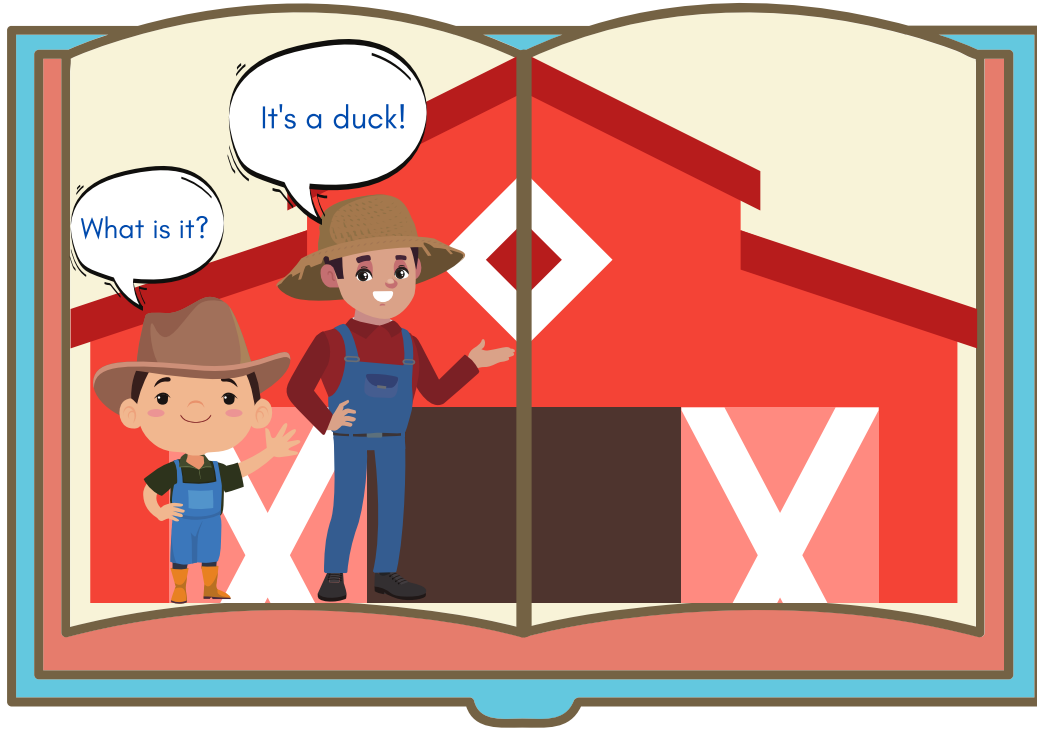
# What is it? It's a horse!



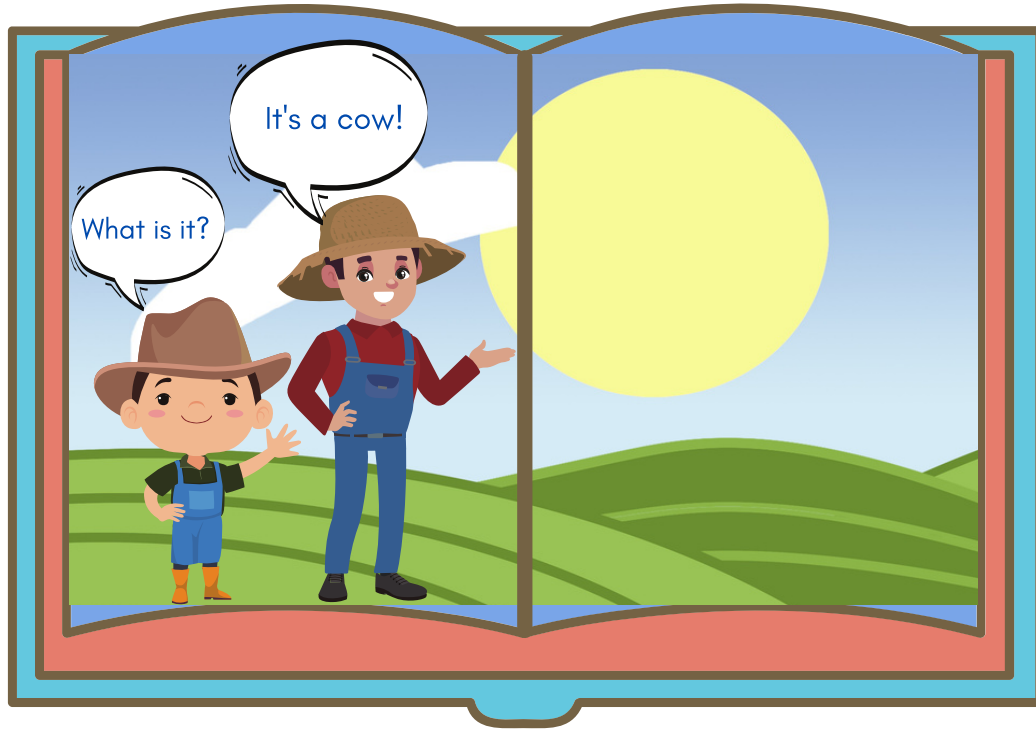
# What is it? It's a pig!



# What is it? It's a duck!

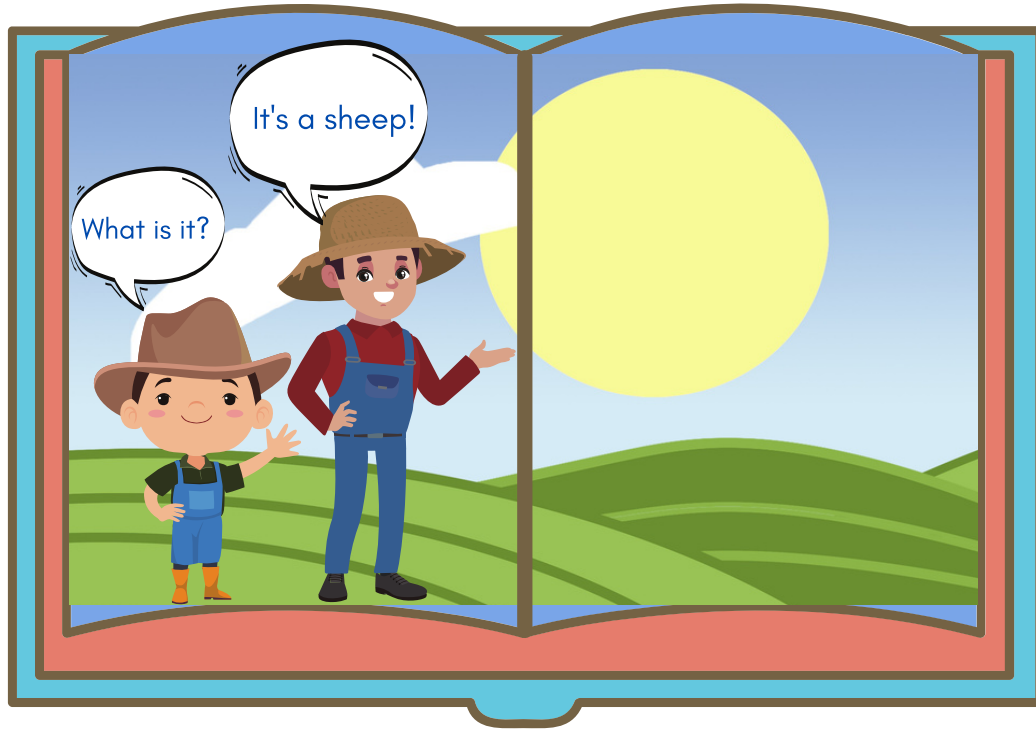


# What is it? It's a cow!

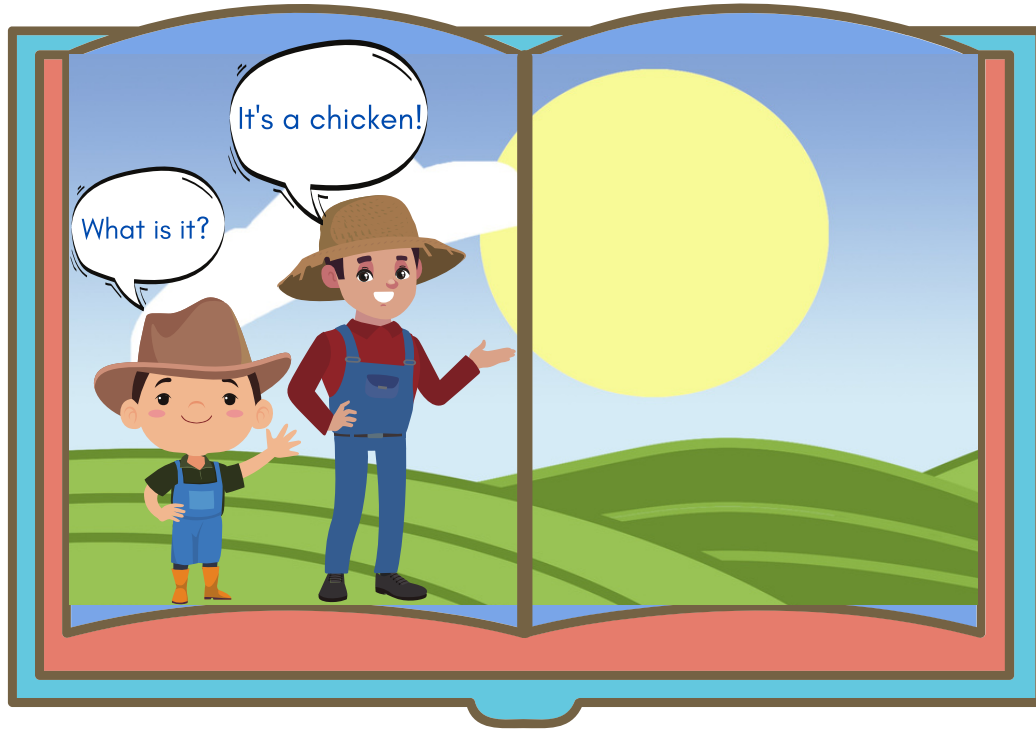




# What is it? It's a sheep!

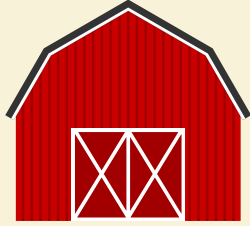


# What is it? It's a chicken!

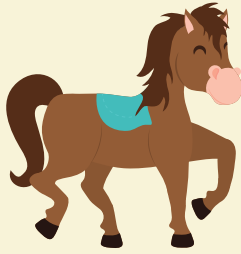


# Review:

barn



horse



pig



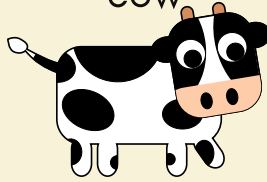
duck



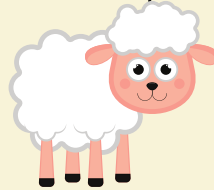
field



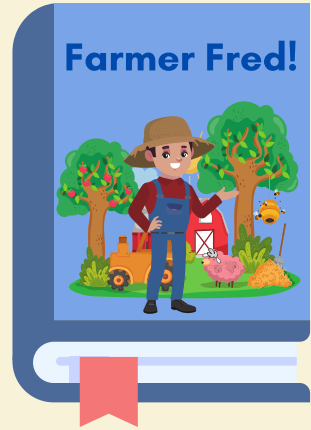
cow



sheep



chicken



What does the horse say? The horse says "neigh!"

What's in the field? A (horse) is in the field!

# Good job!

