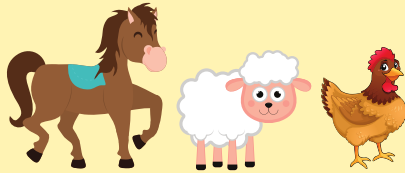
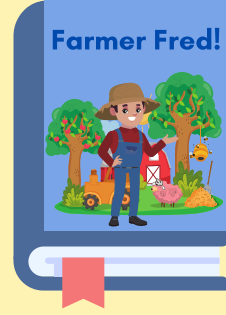
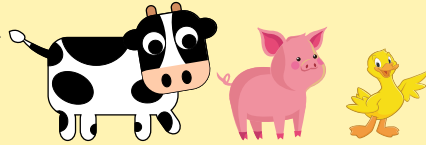
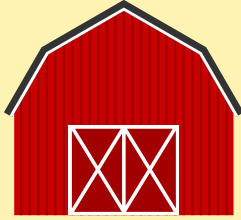


A bright, colorful children's playroom. In the center, there is a small yellow table with a white top and colorful legs, surrounded by blue and yellow chairs. The floor is covered with various toys, including colorful blocks, a stacking ring toy, and teddy bears. On the wall, there are large, colorful cutouts of a green dinosaur, a yellow giraffe, and a blue elephant. To the right, there are blue window blinds. The overall atmosphere is cheerful and inviting.

Welcome!

LVO U8 L10

In this lesson:



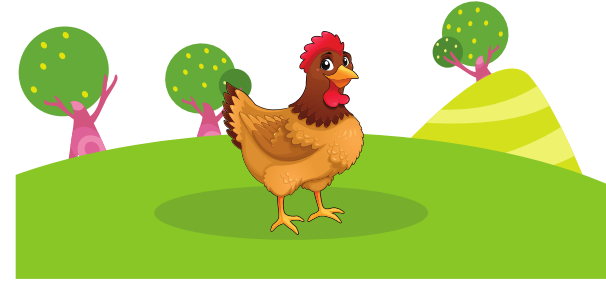
What's in the barn?

A ___ is in the barn.



What's in the field?

A ___ is in the field.



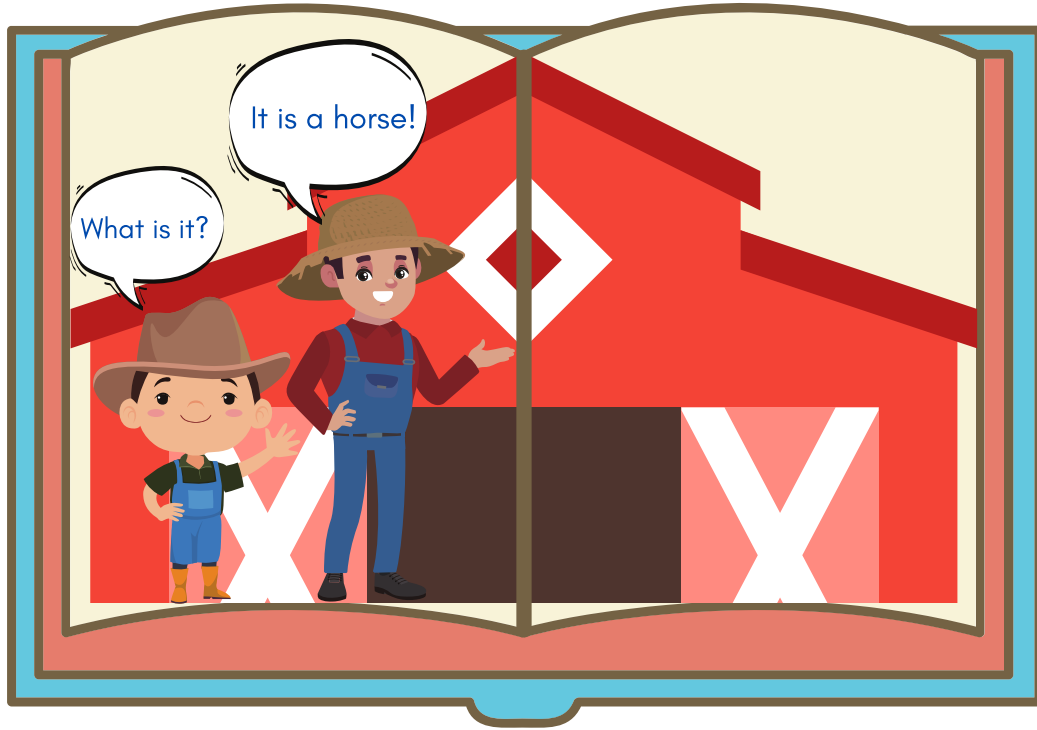
Story Time!



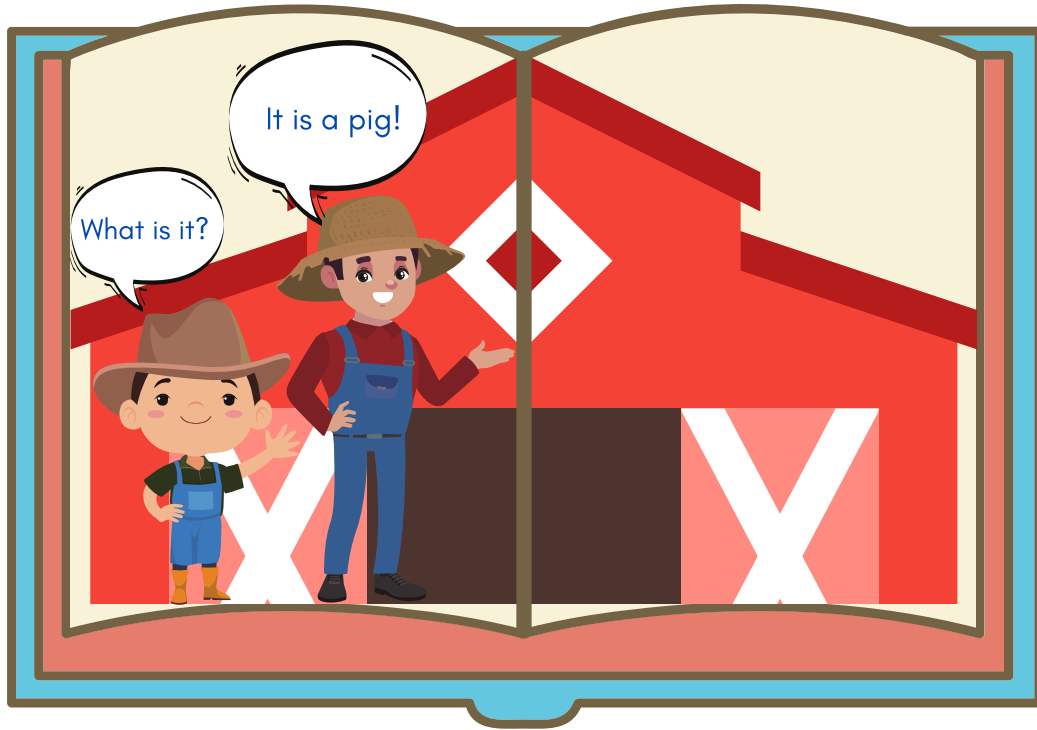
Farmer Fred!



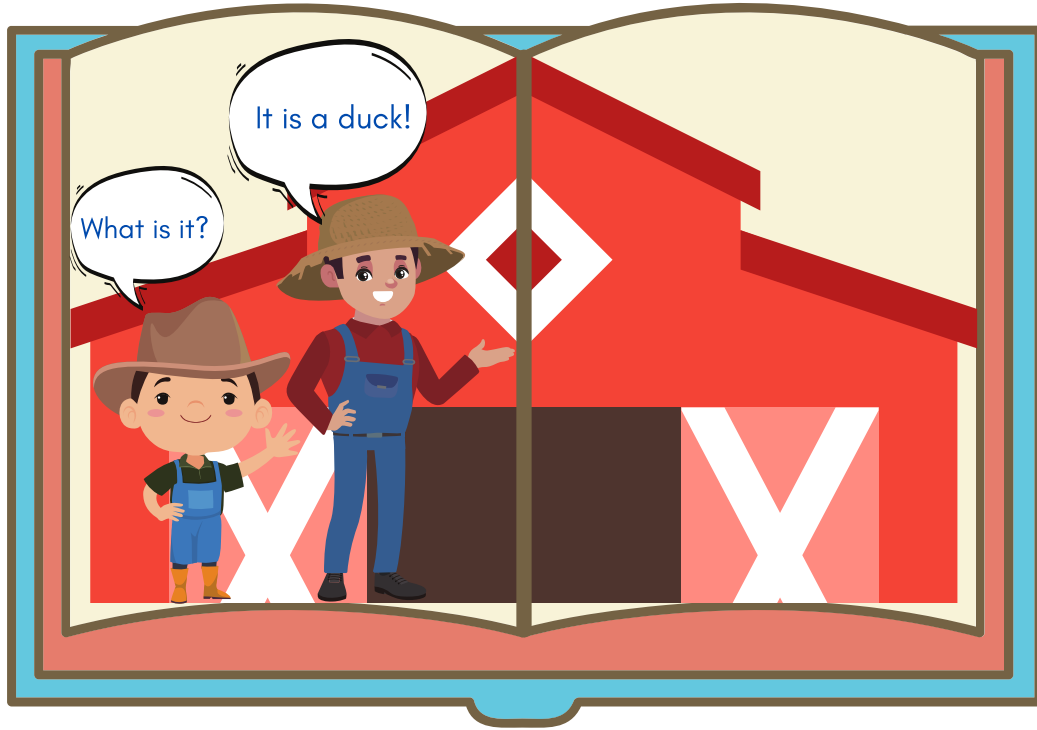
What is it? It is a horse!



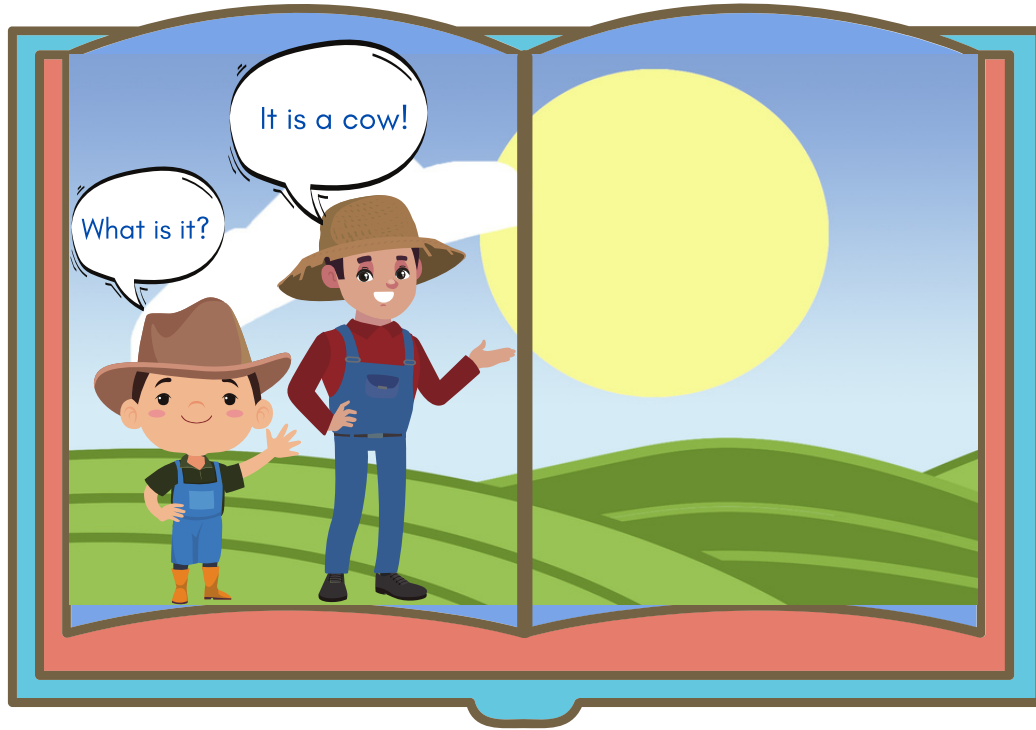
What is it? It is a pig!



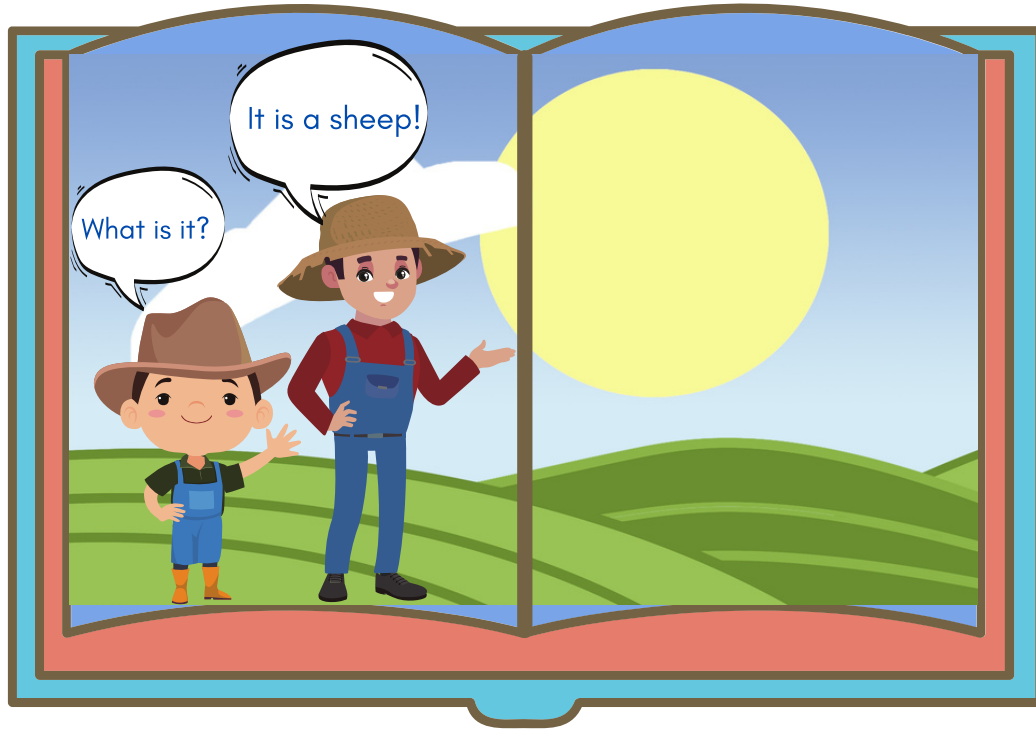
What is it? It is a duck!



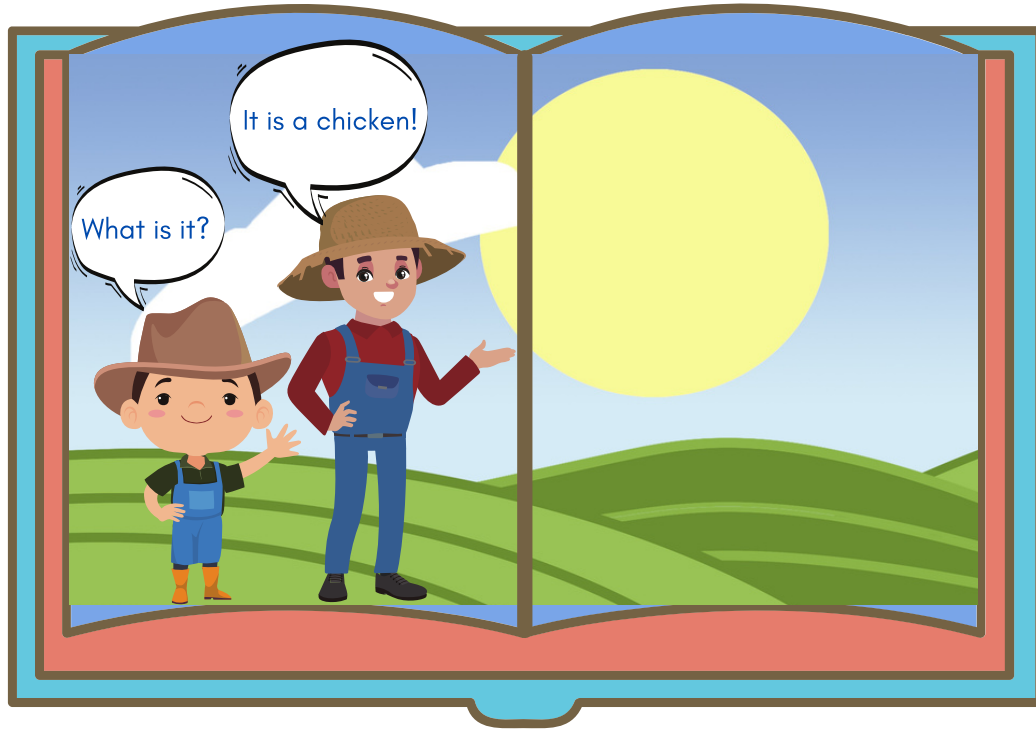
What is it? It is a cow!



What is it? It is a sheep!



What is it? It is a chicken!



A stylized illustration of a library. In the foreground, a large blue book with the words "The End" written on its cover is positioned vertically. The book has a red bookmark sticking out from the bottom. Behind the book, there are three shelves filled with various colorful books. The shelves are set against a dark purple wall. In the foreground, there are two dark grey chairs and a table, suggesting a reading area. The overall style is flat and modern.

**The
End**

Clap and say!



/w/ /w/

?



/w/ /w/

?



/w/ /w/

?



Clap and say!



/x/ /x/
?

/x/ /x/
?

/x/ /x/
?

A red-bordered box containing three icons: a yellow clapping hands icon, a yellow speech bubble icon, and a girl's head and shoulders icon.

Clap and say!



/y/ /y/
?



/y/ /y/
?



/y/ /y/
?



Clap and say!



/z/ /z/
?



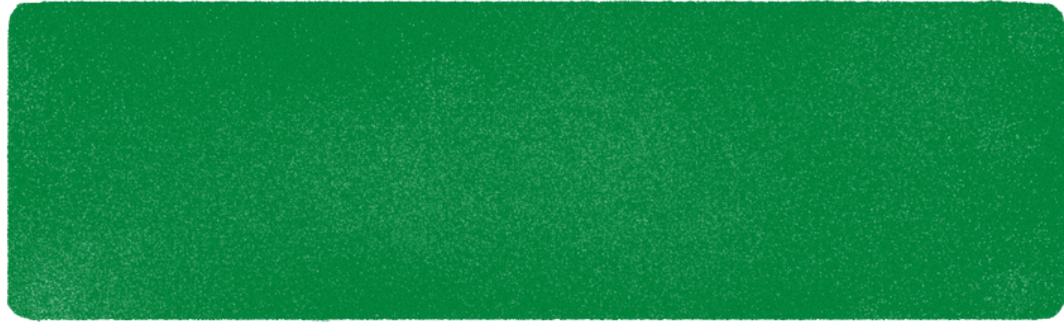
/z/ /z/
?



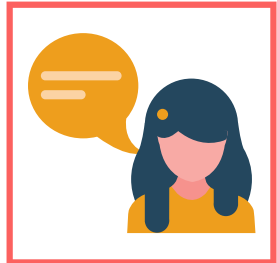
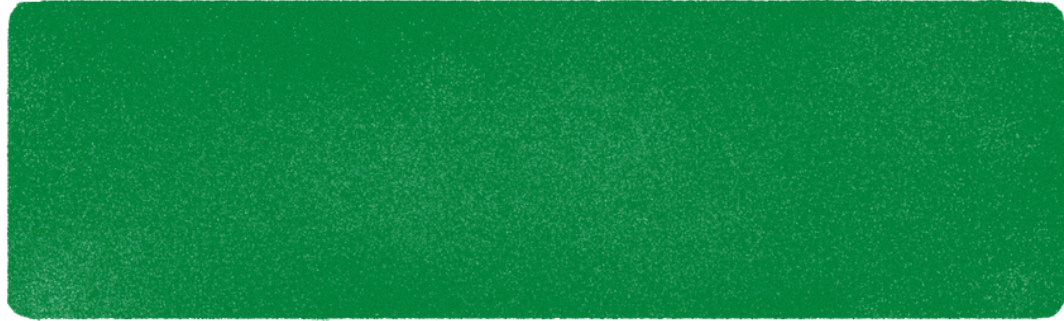
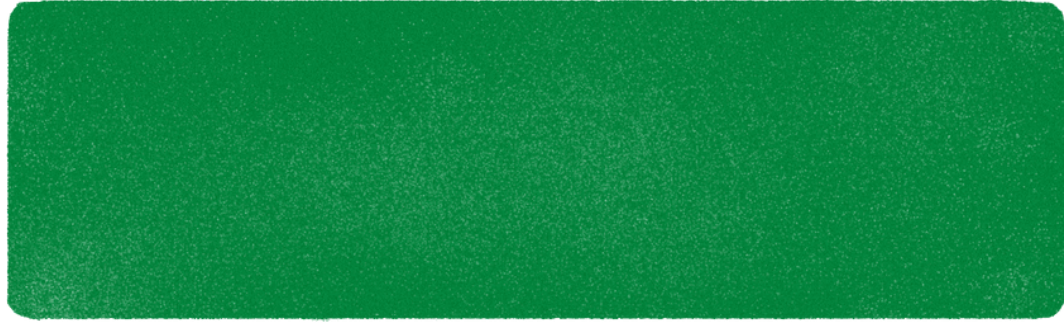
/z/ /z/
?



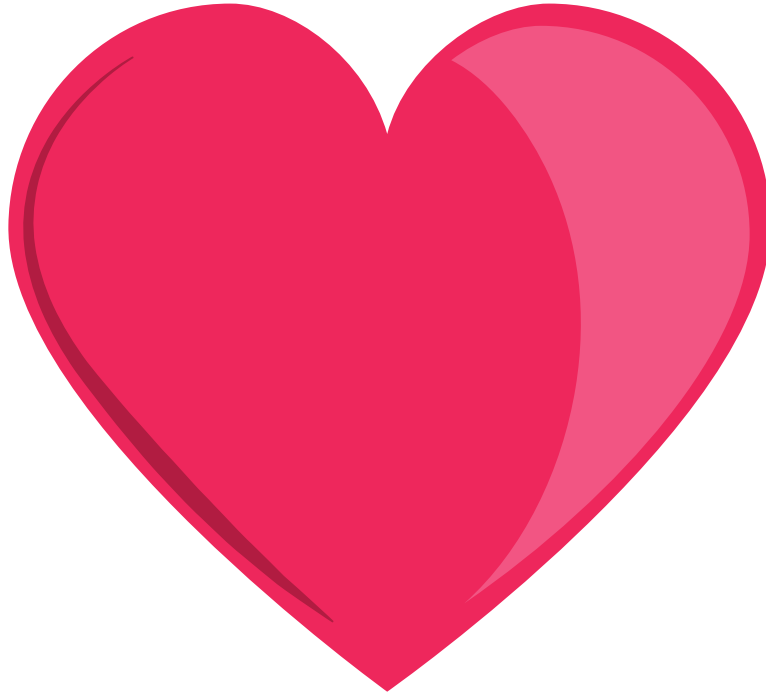
What is it? It is a...



What are they? They are..



What is it? It is a...



What are they? They are..



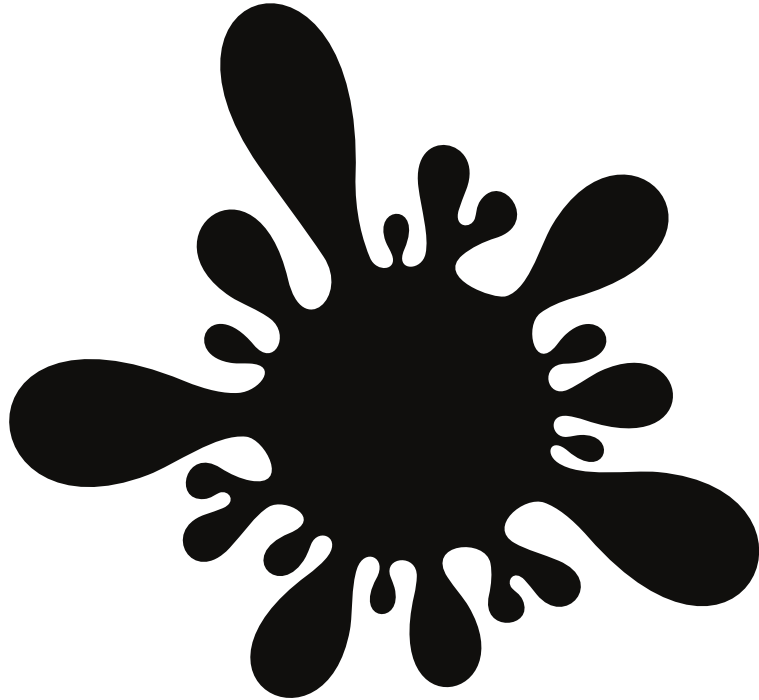
What is it? It is a ____.



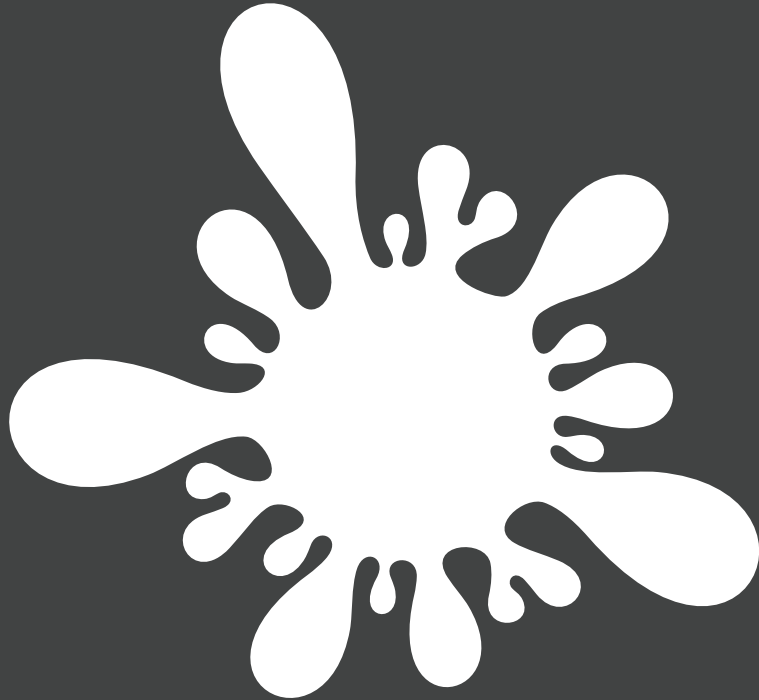
What are they? They are..

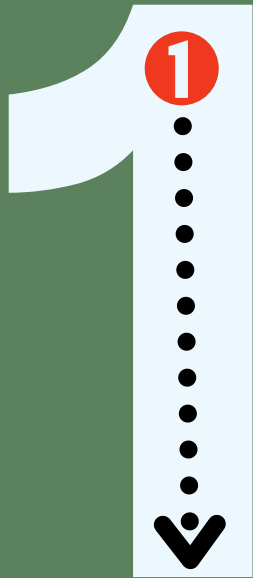


What color is it? It is ...



What color is it? It is ...





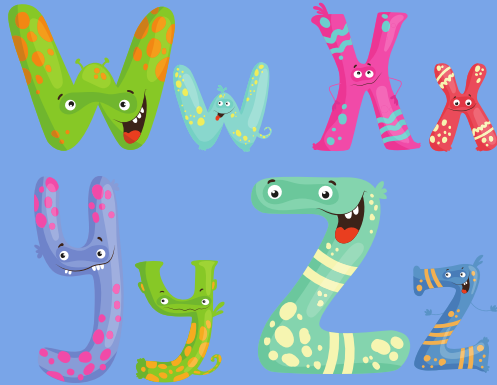
thirteen



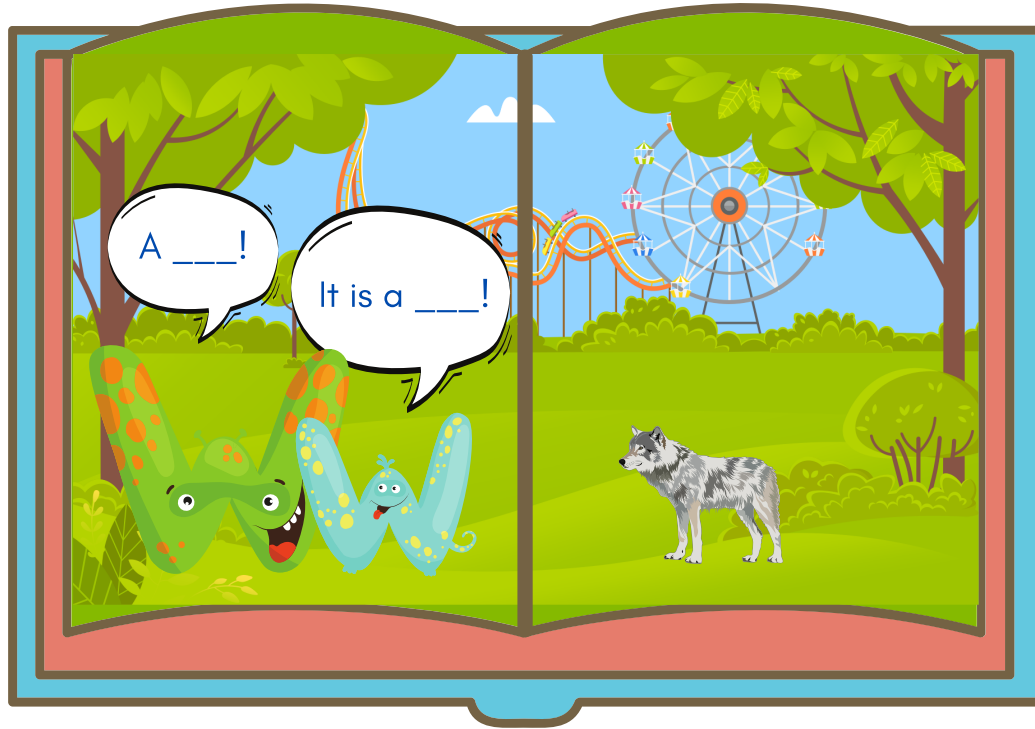
Story Time!



Monster Letters!



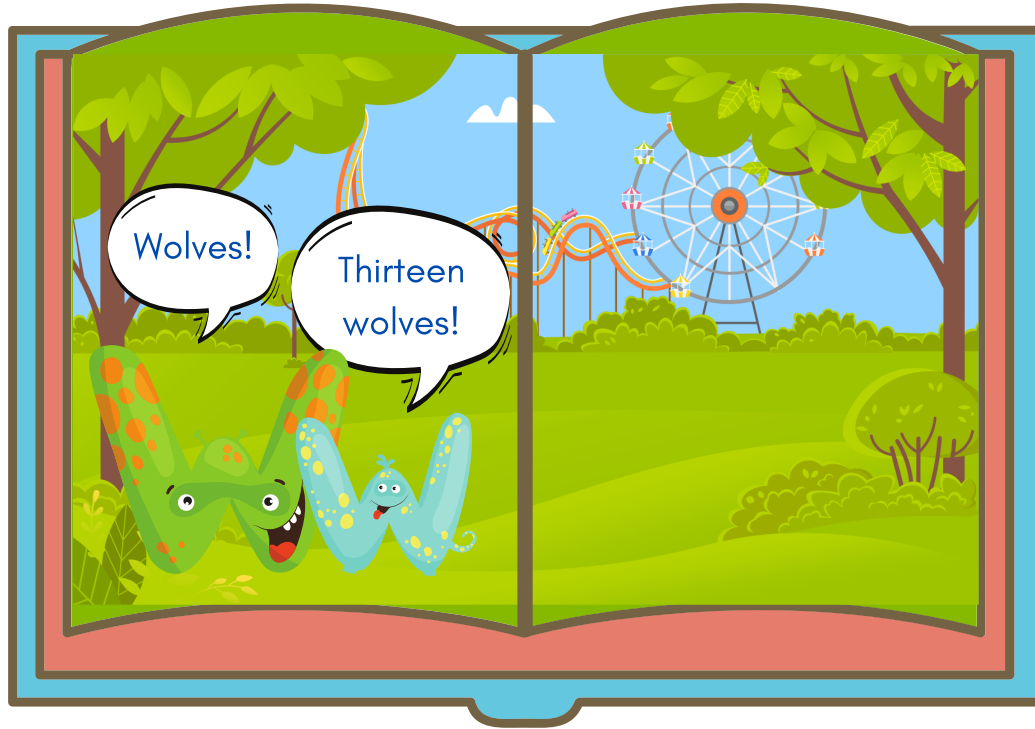
A ___! It is a ___!



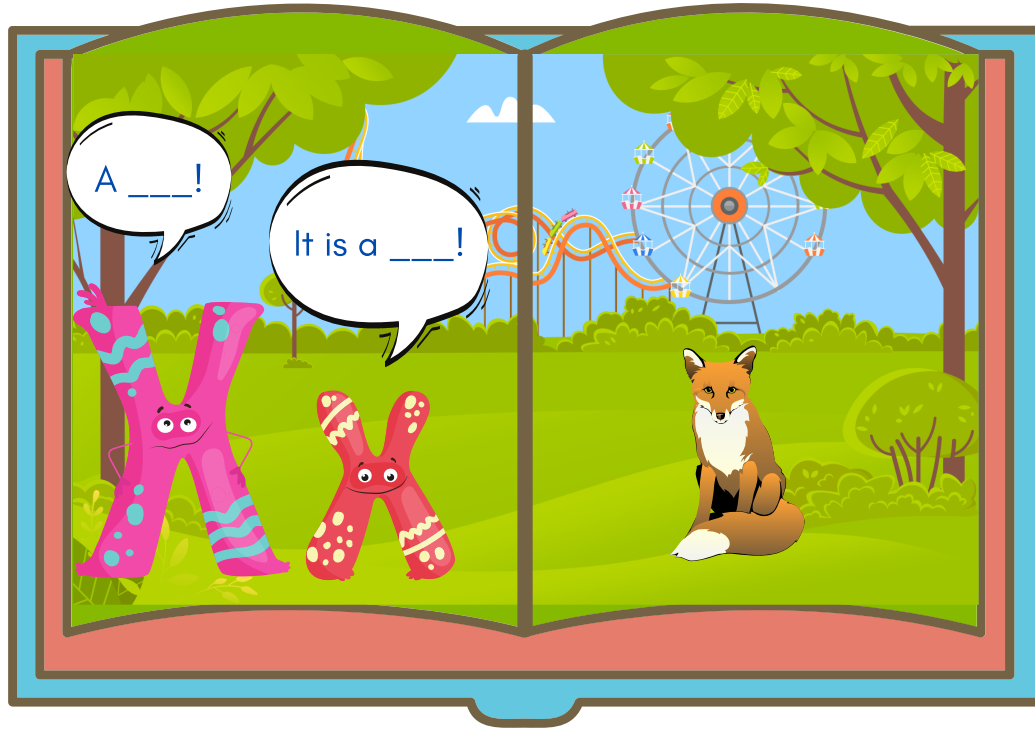
A ___!

It is a ___!

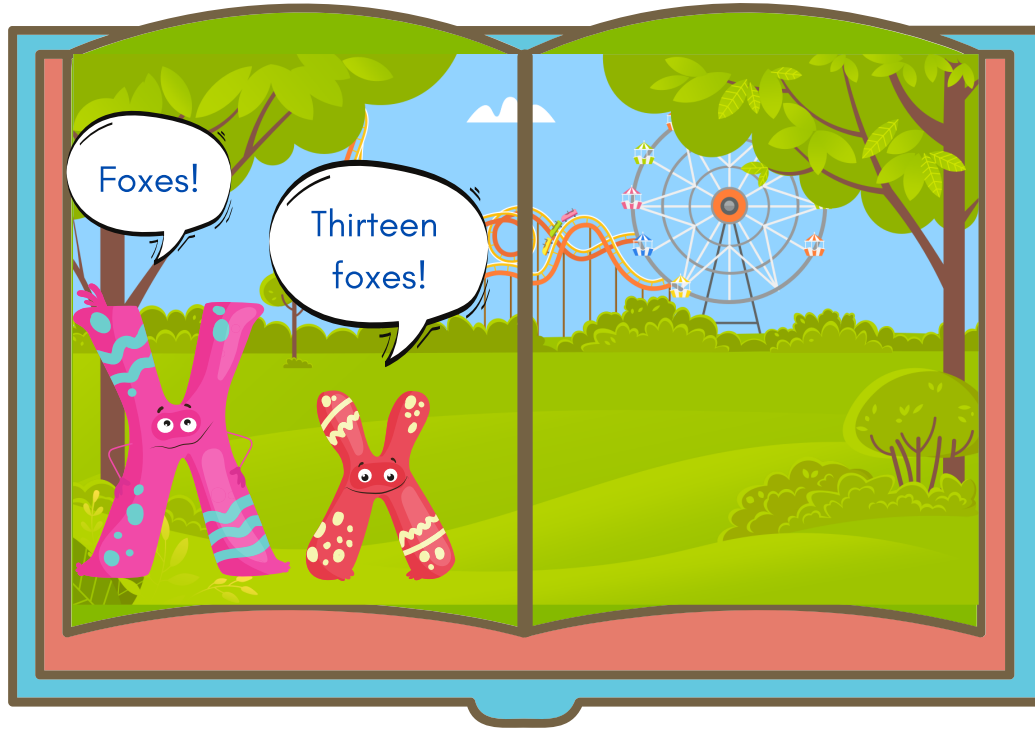
Wolves. Thirteen wolves!



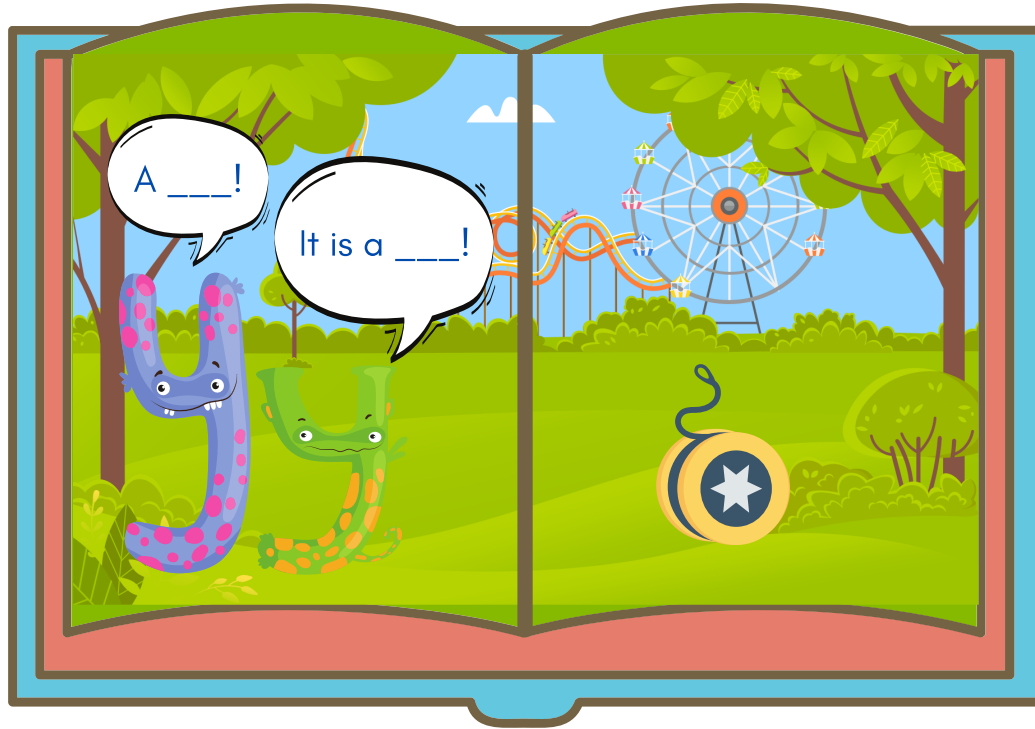
A ___! It is a ___!



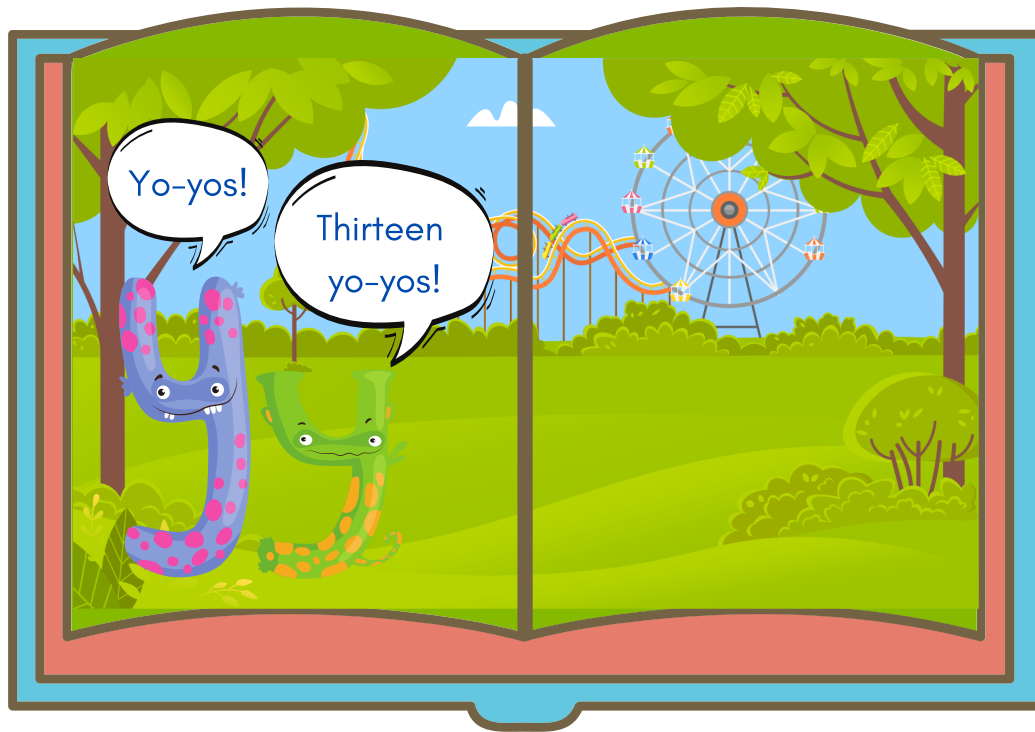
Foxes! Thirteen foxes!



A ___! It is a ___!



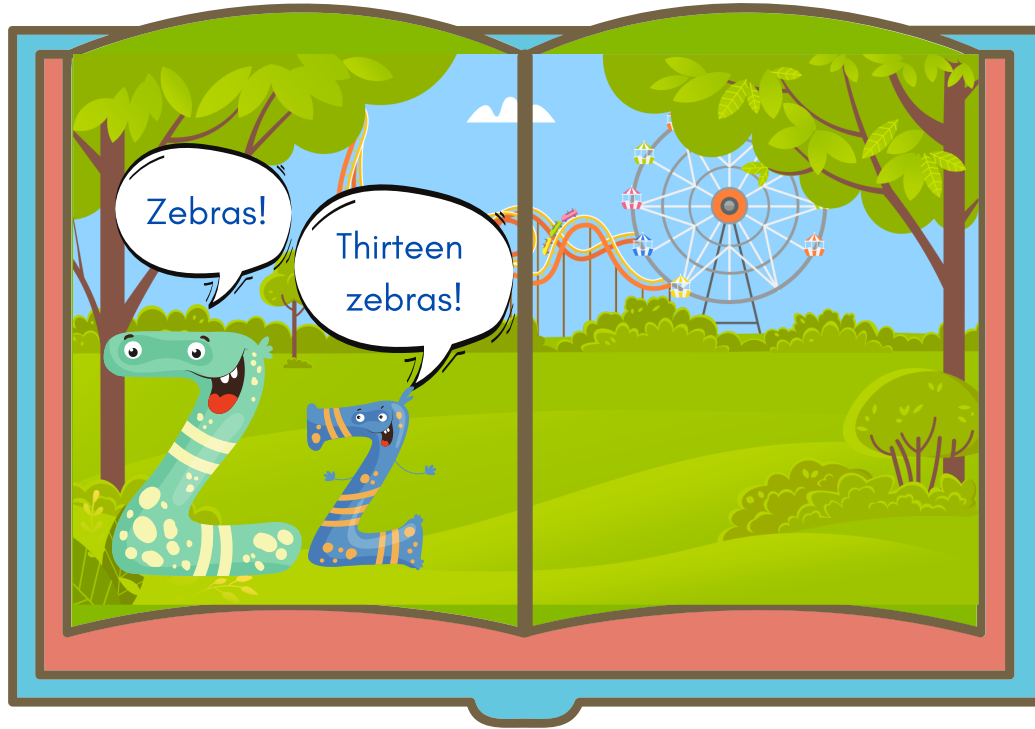
Yo-yos! Thirteen yo-yos!



A ___! It is a ___!



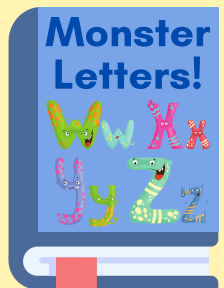
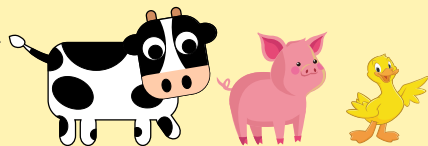
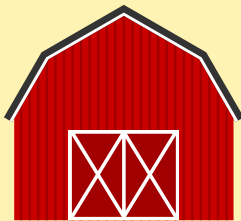
Zebras! Thirteen zebras!



A stylized illustration of a library. In the foreground, a large blue book is centered, with the words "The End" written in a bold, dark blue font. The book has a red bookmark sticking out from the bottom. Behind the book, there are three shelves of bookshelves filled with various colorful books. The background is a dark purple color, and the entire scene is set against a light blue background.

**The
End**

Review:



Good job!

