

A bright, colorful children's playroom. In the center, there is a small yellow table with a white top and colorful legs, surrounded by blue and yellow chairs. On the table, there are colorful blocks and a small toy. To the left, a white table holds a colorful abacus and other toys. A yellow chair with a white backrest has a teddy bear on it. The floor is covered with various toys, including colorful blocks, a blue ball, and a stack of colorful rings. On the right, there is a stack of colorful rings and a teddy bear sitting on the floor. The background features a light blue wall with large, colorful cutouts of a green dinosaur, a yellow giraffe, and a blue elephant. A window with white blinds is visible on the right side.

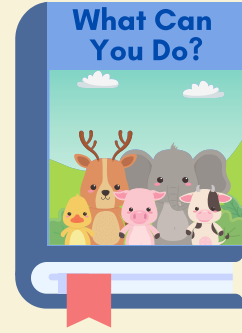
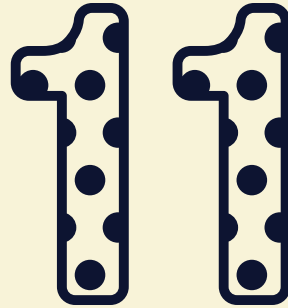
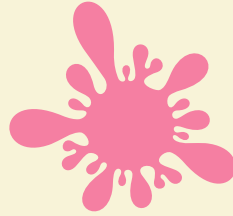
Welcome!

LVO U6 L10

Actions



In this lesson:



Let's walk!



Student



"I can / can't walk!"

Let's run!

Student



"I can / can't run!"

Let's jump!

Student



"I can / can't jump!"

Let's swim!



Student



"I can / can't swim!"

Let's dance!



Student



"I can / can't dance!"

Let's sing!



Student

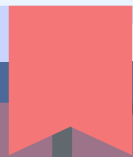


"I can / can't sing!"

Story Time!



What Can You Do?



Can you walk? Yes, I can!



Can you run? No, I can't!



Can you jump? Yes, I can!



Can you swim? No, I can't!



Can you dance? Yes, I can!



Can you sing? No, I can't!



A stylized illustration of a library. In the foreground, a large blue book is centered, with the words "The End" written in a bold, dark blue font. The book has a red bookmark sticking out from the bottom. Behind the book, there are three shelves of a bookshelf, each filled with books of various colors (green, blue, orange, purple, pink, brown, grey). The background is a dark purple color, and the entire scene is set against a light blue background. There are also some dark grey shapes representing a desk and a chair in the foreground.

**The
End**

Clap and say!



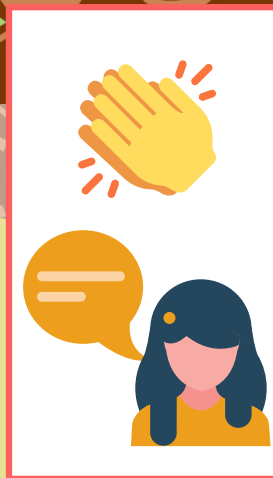
/q/ /q/
?



/q/ /q/
?



/q/ /q/
?



Clap and say!



/r/ /r/
?



/r/ /r/
?



/r/ /r/
?



Clap and say!



/s/ /s/
?



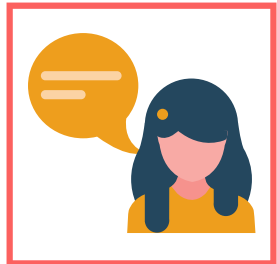
/s/ /s/
?



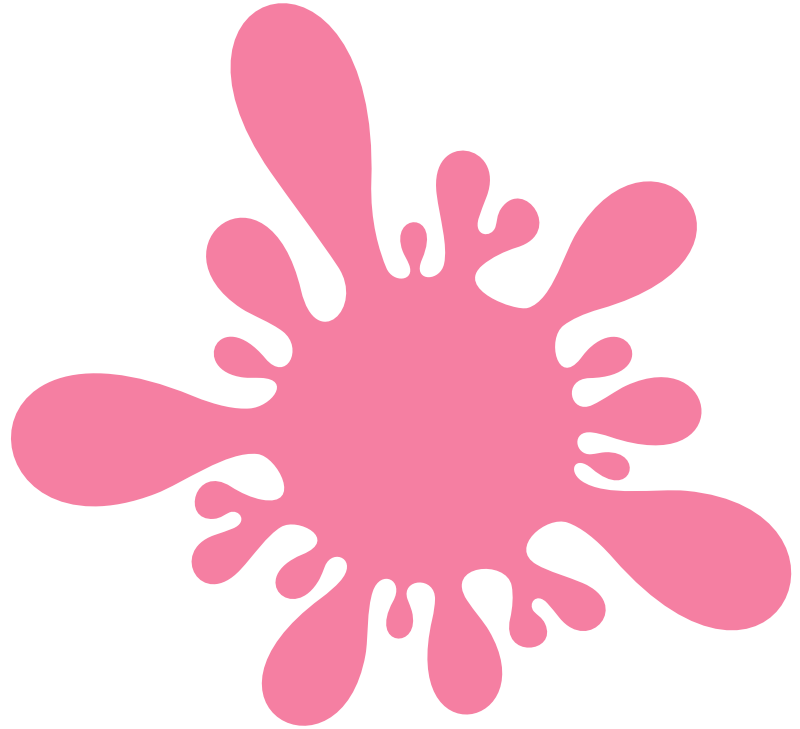
/s/ /s/
?

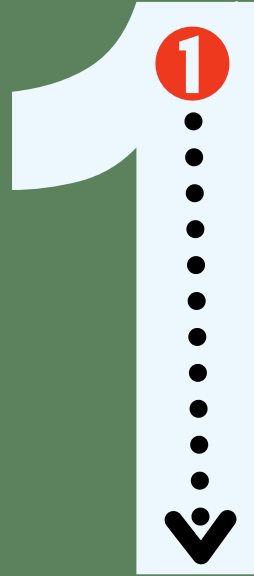
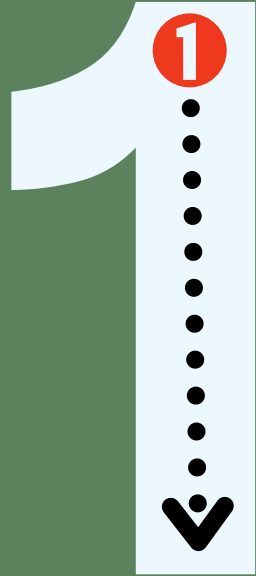
This inset box contains three icons: a yellow clapping hands icon at the top, a yellow speech bubble icon in the middle, and a cartoon girl's head with dark hair and a yellow top at the bottom.

What is it? It is a ____.



What is it? It is ____.

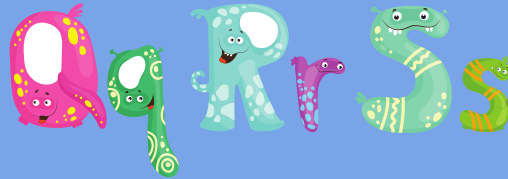




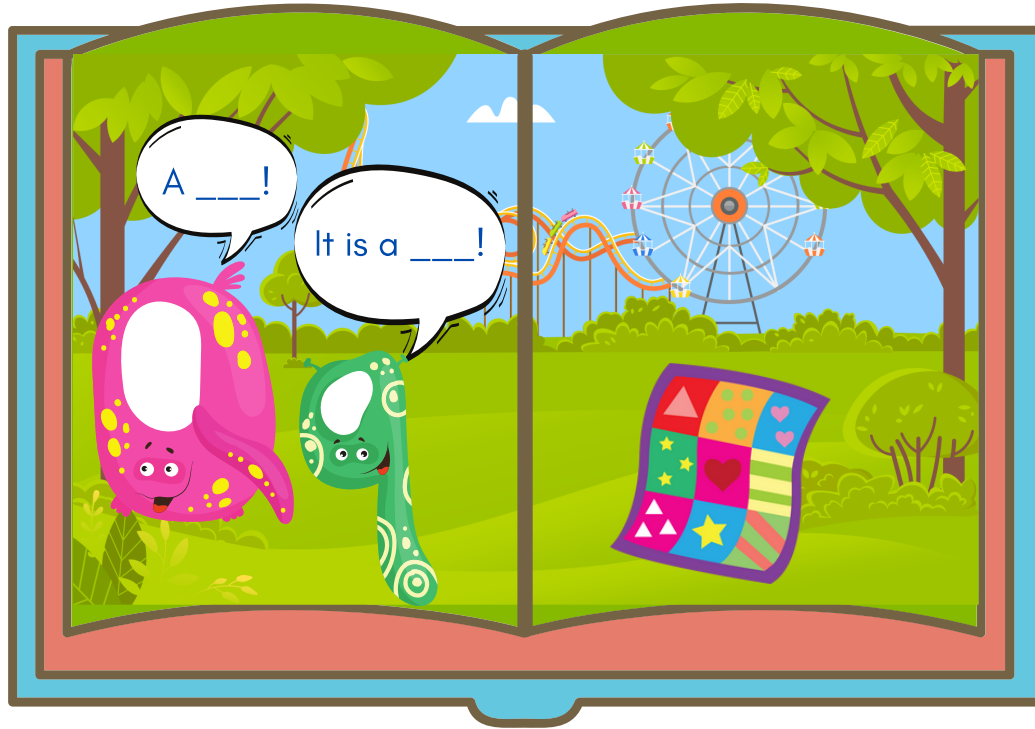
eleven



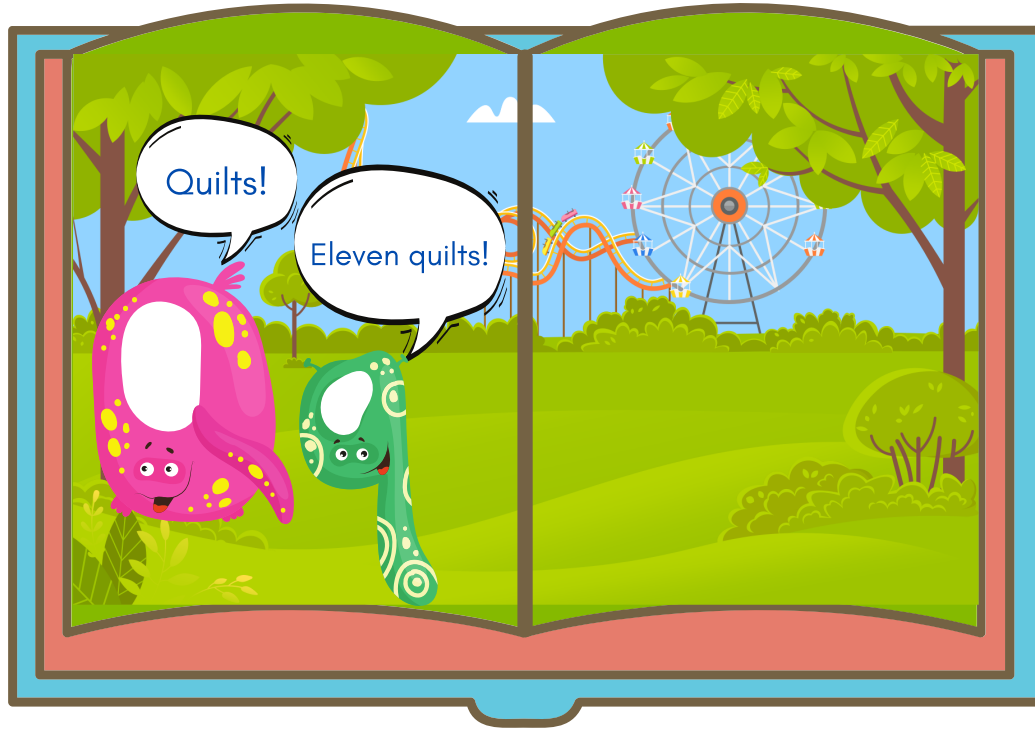
Monster Letters!



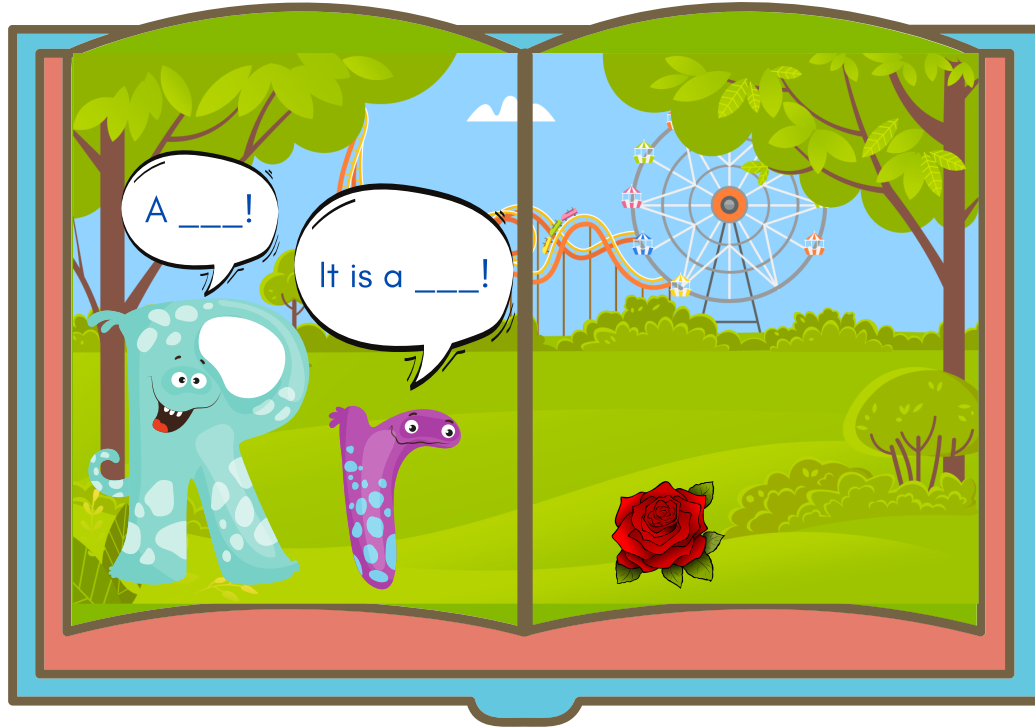
A ___! It is a ___!



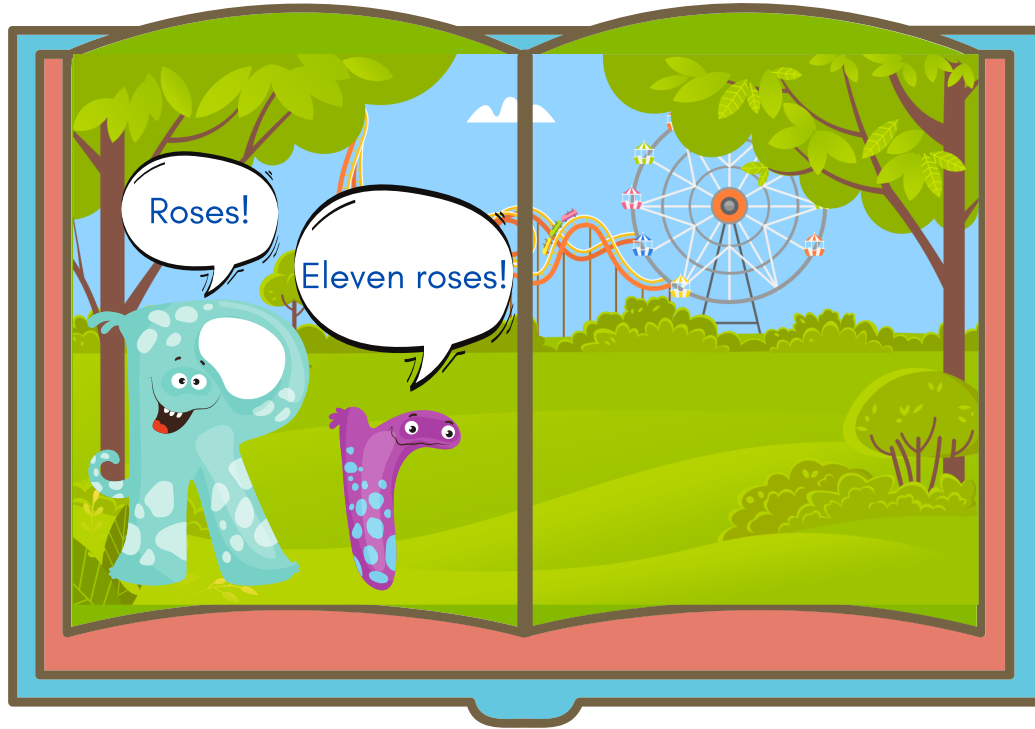
Quilts! Eleven quilts!



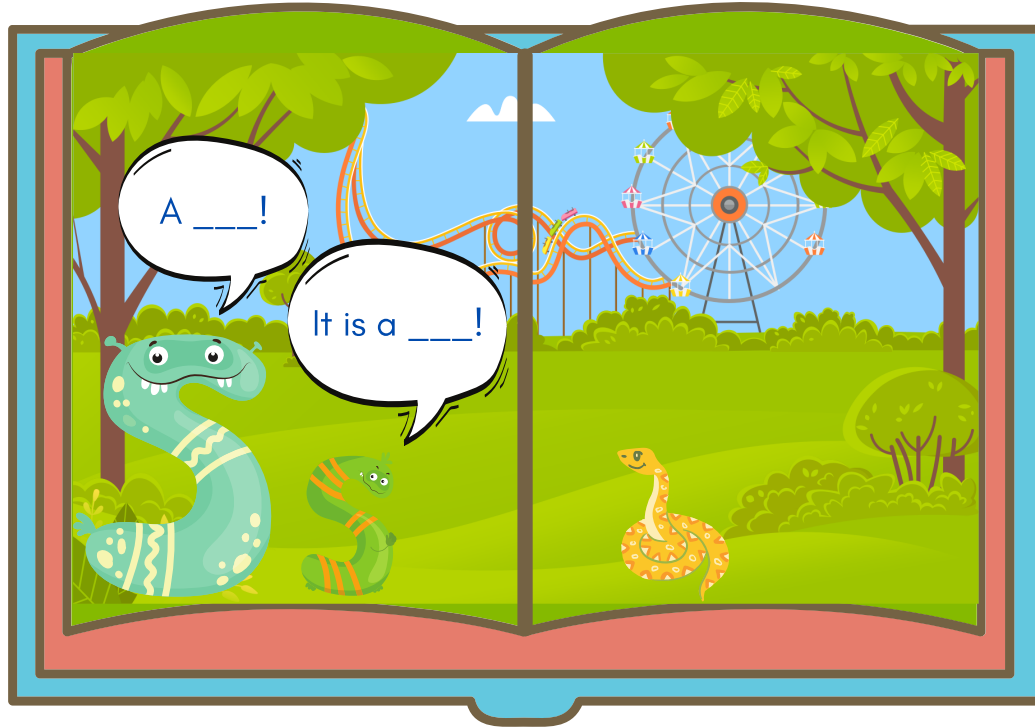
A ___! It is a ___!



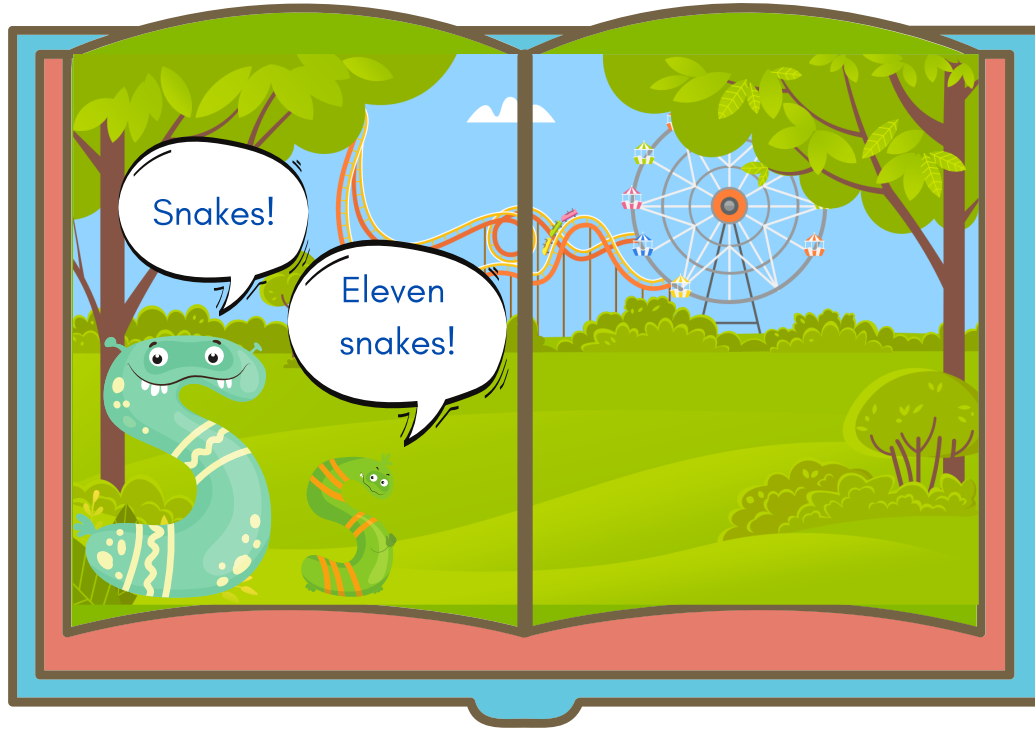
Roses! Eleven roses!



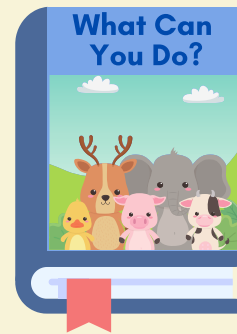
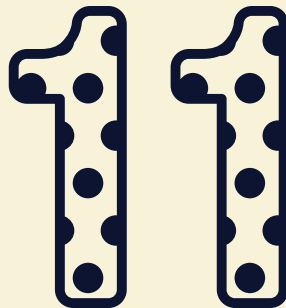
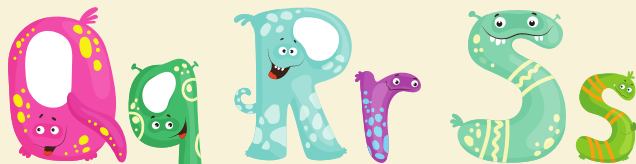
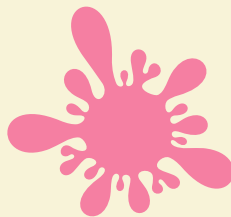
A ___! It is a ___!



Snakes! Eleven snakes!



Review:



Good job!

