

A bright, colorful children's playroom. In the center, there is a small yellow table with a white top and colorful legs, surrounded by blue and yellow chairs. On the table, there are colorful blocks and a small toy. To the left, a white table holds a colorful abacus and other toys. The floor is covered with various toys, including colorful blocks, a blue ball, and a green toy. On the right, there is a stack of colorful rings and two teddy bears. The walls are light blue and decorated with large, colorful cutouts of a green dinosaur, a yellow giraffe, and a blue elephant. A window with white blinds is visible on the right side.

Welcome!

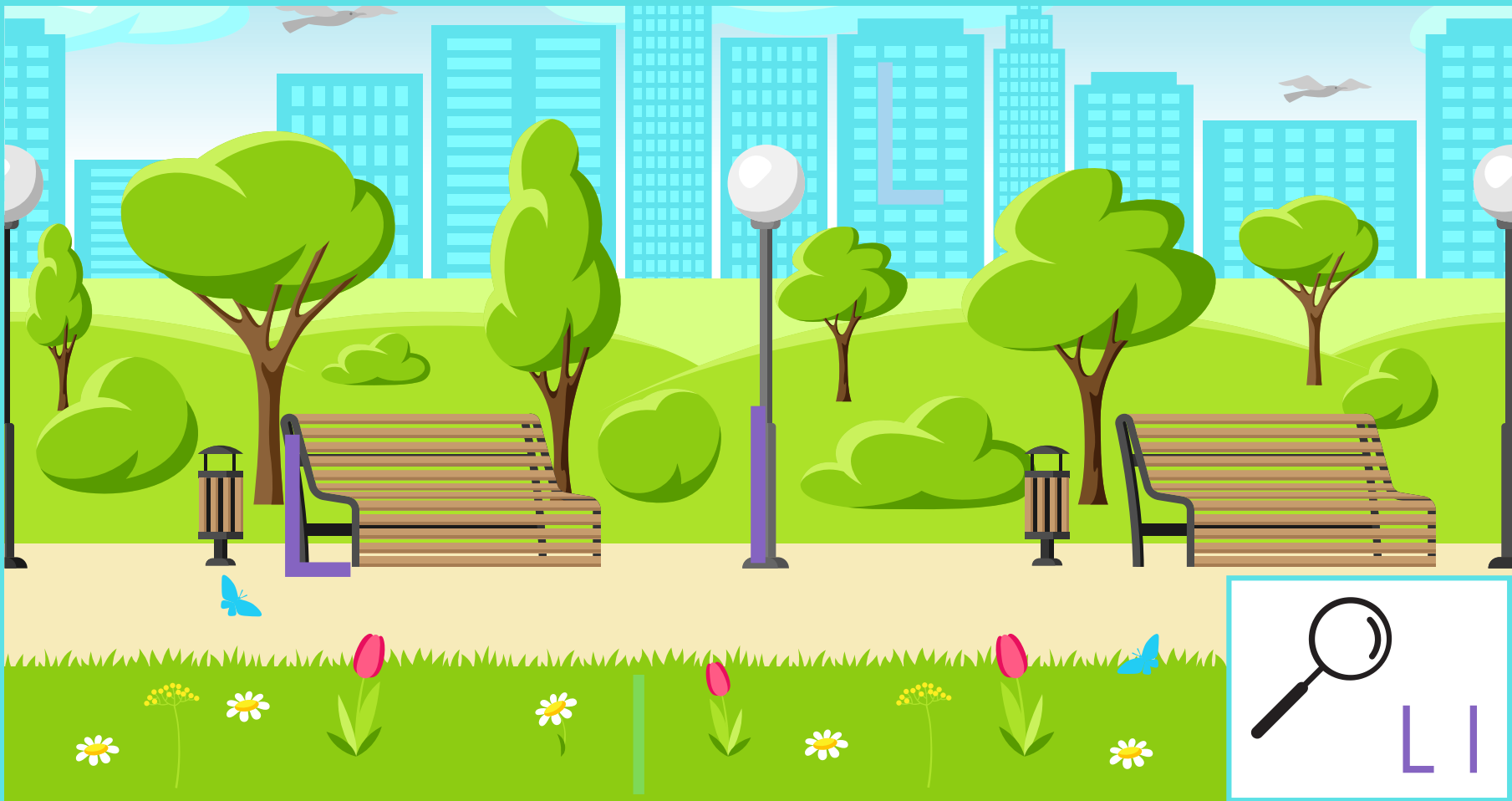
LV0 U5 L6

In this lesson:

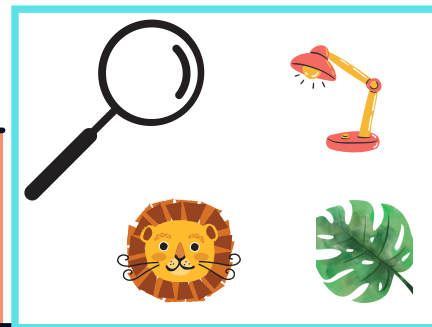
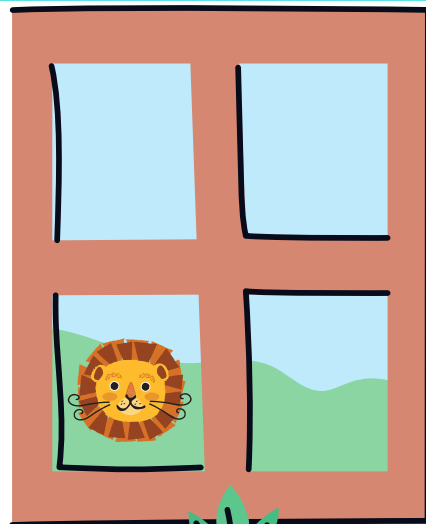


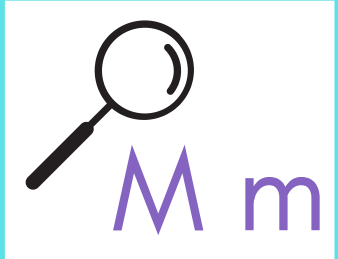
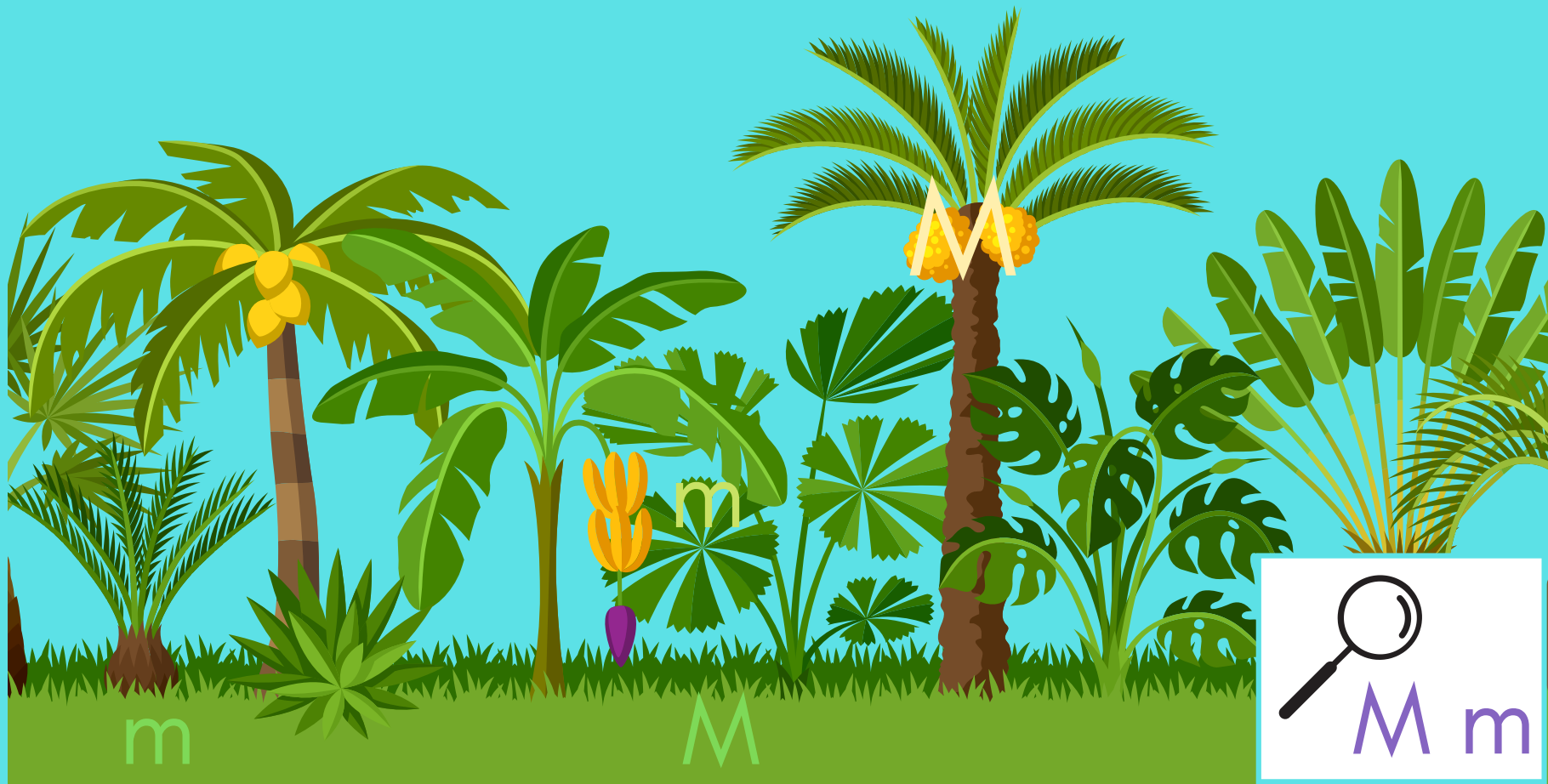
Heart.

It is a heart.

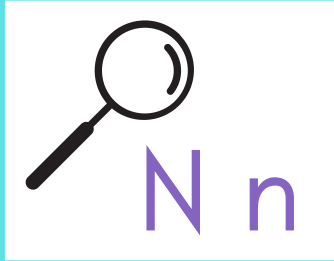


L I



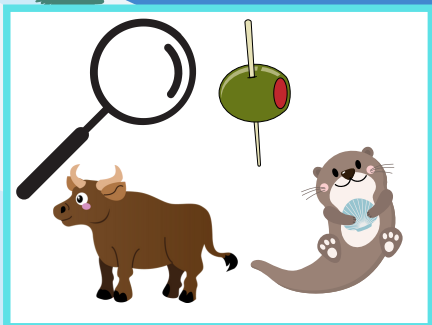




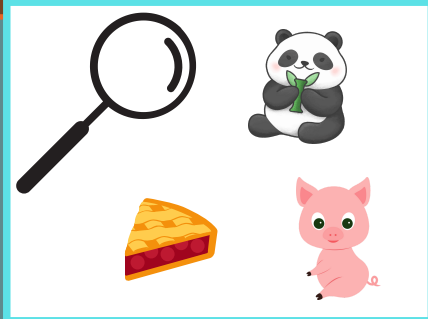






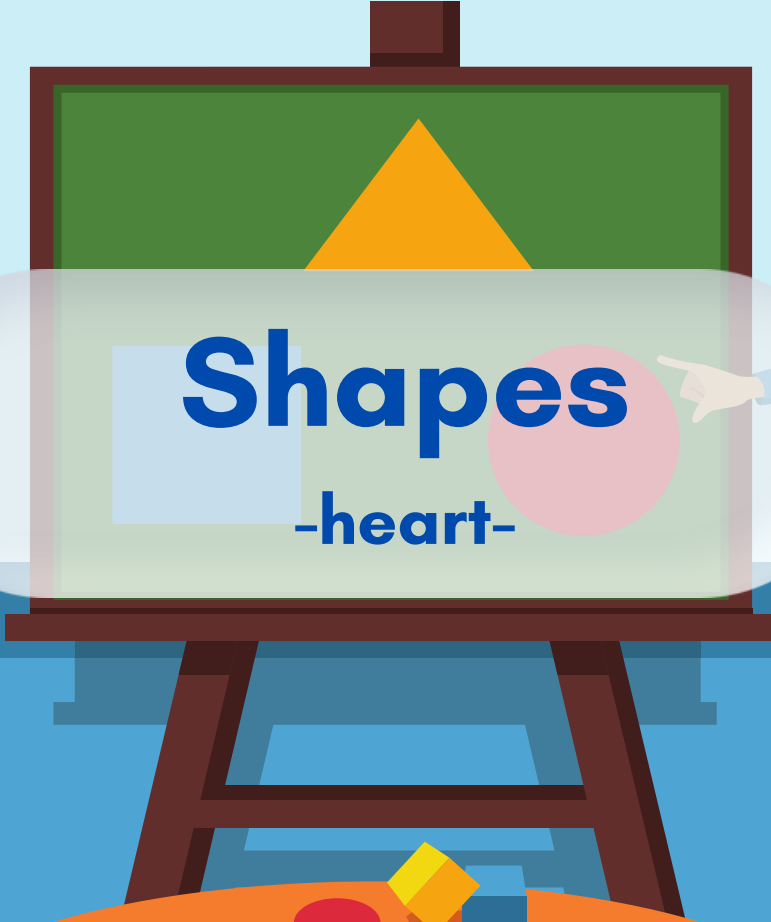






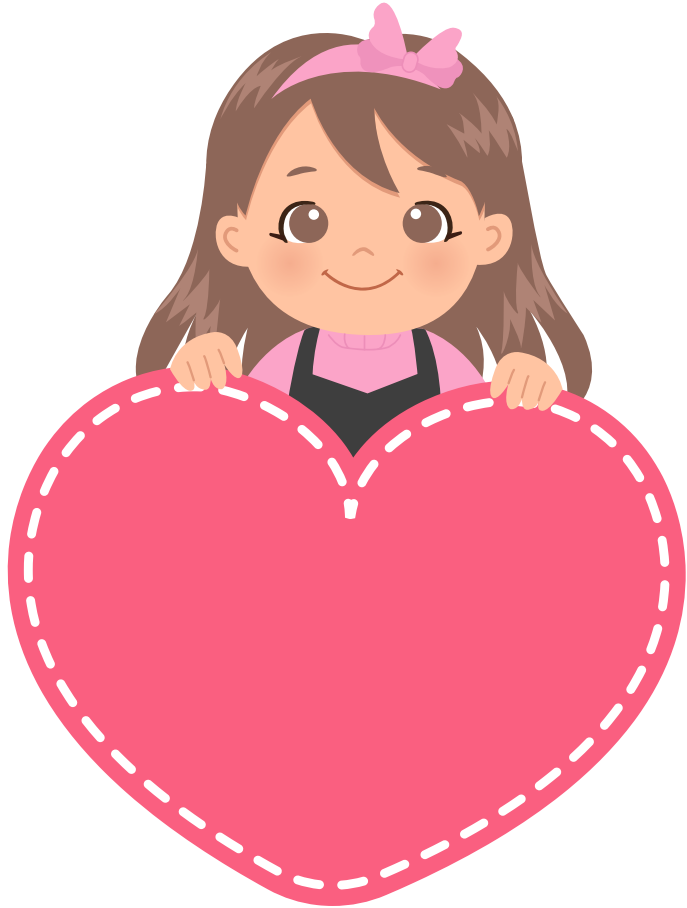
Shapes

-heart-



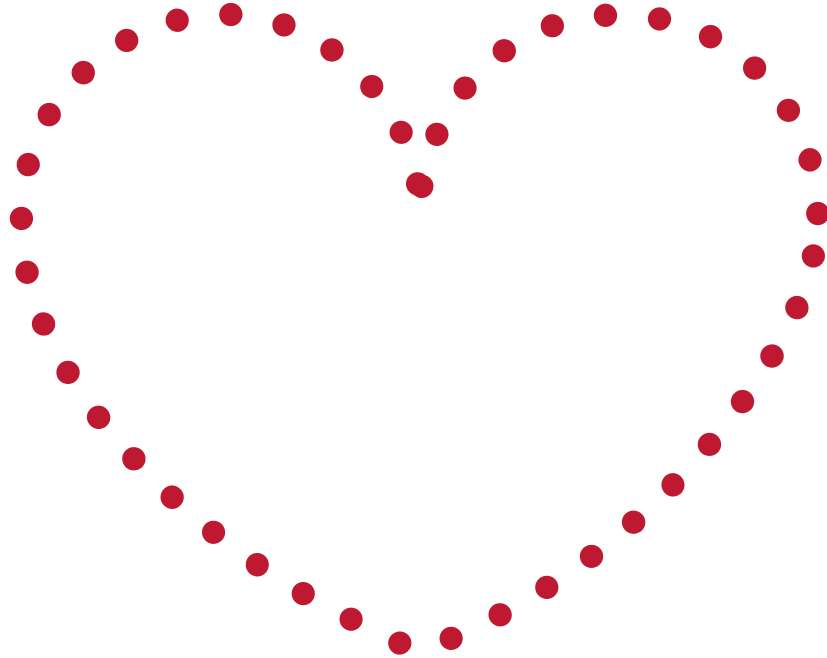


heart

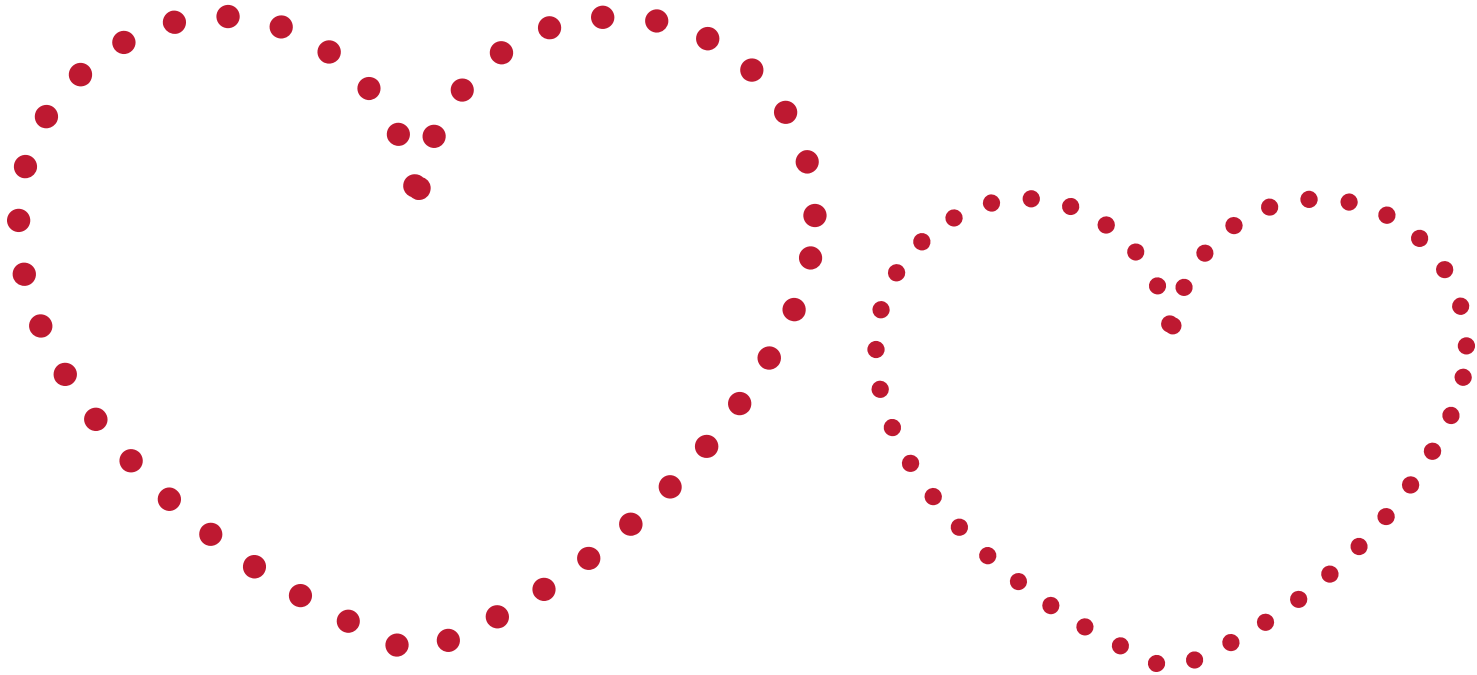


**It is a
heart!**

Draw a heart!



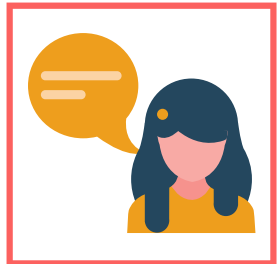
Draw two hearts!



It is a heart!



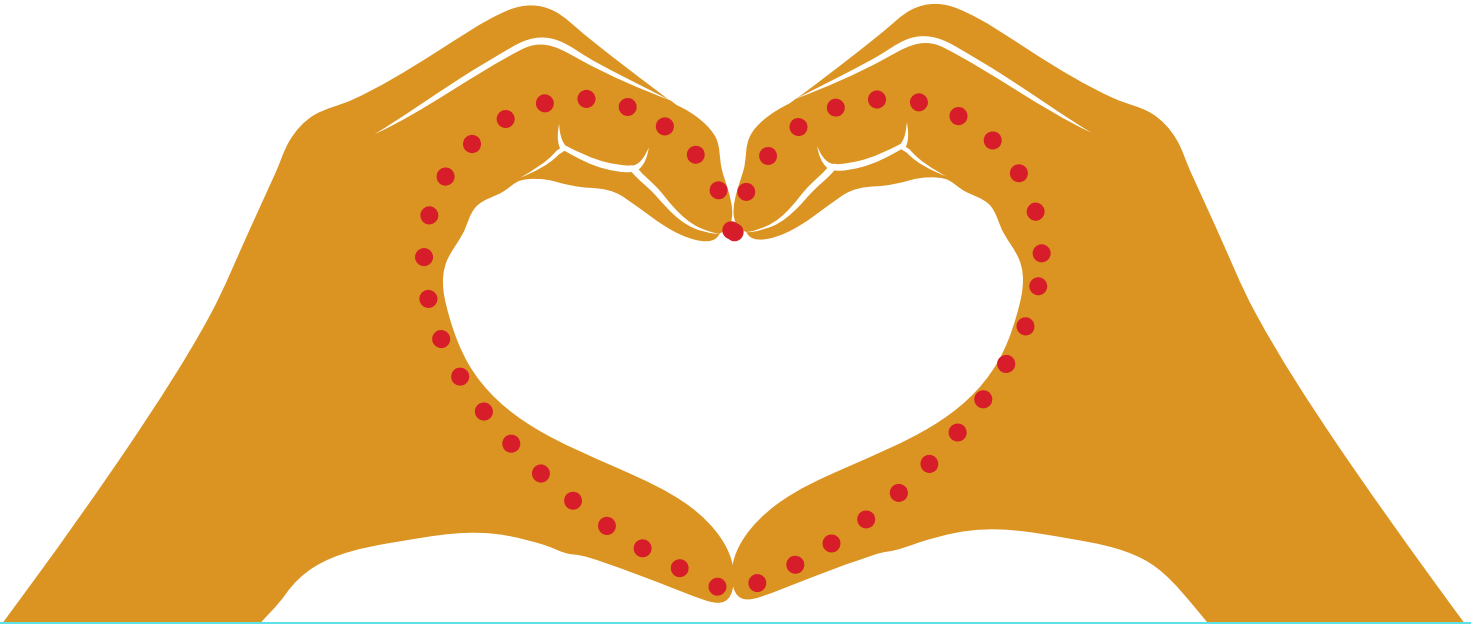
What is it? It is a ____.





Big heart!

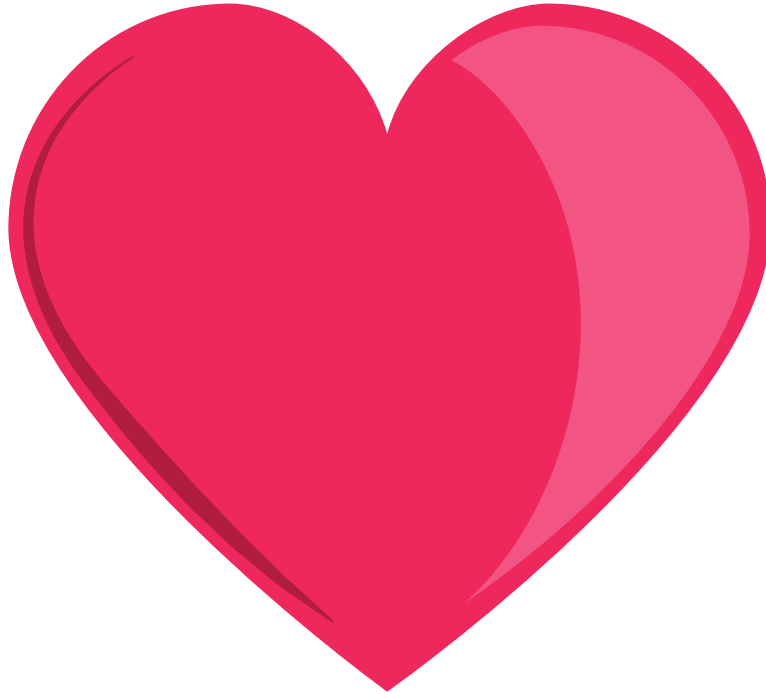
Small heart!



Tiny heart!



What is it? It is a...



In this lesson:



Heart.

It is a heart.

Good job!

