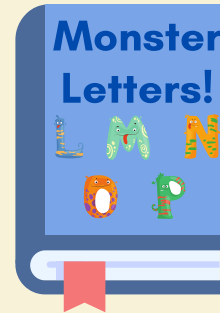
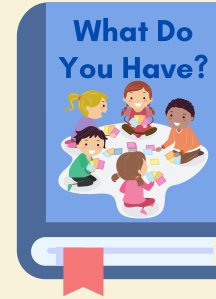
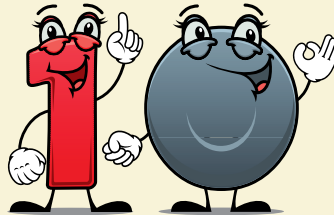
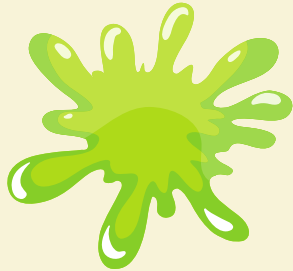
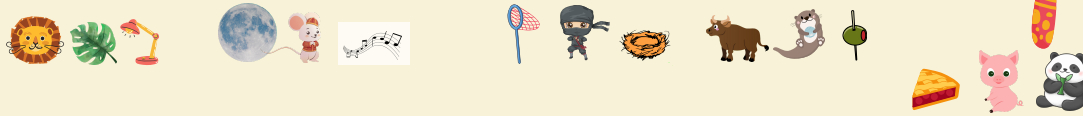


A vibrant children's playroom with a light blue wall. On the wall are large cutouts of a green dinosaur, a yellow giraffe, and a blue elephant. A yellow chair is on the left with a teddy bear on it. In the center is a small table with a yellow top and colorful legs, with a blue chair in front of it. To the right is a stack of colorful rings. On the floor are various toys including colorful blocks, a blue ball, and a teddy bear. A window with blue shutters is on the right.

# Welcome!

LV0 U5 L10

# In this lesson:

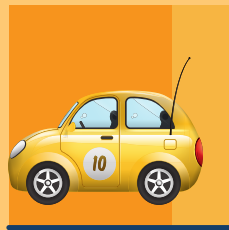
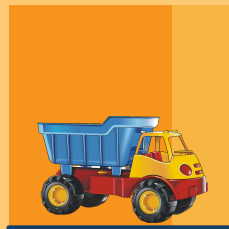
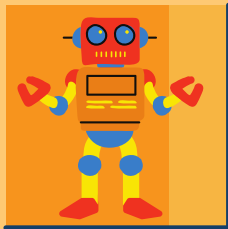
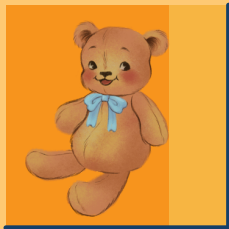
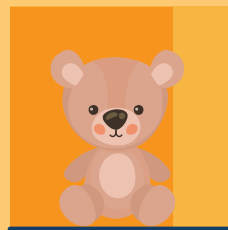
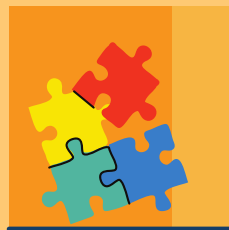
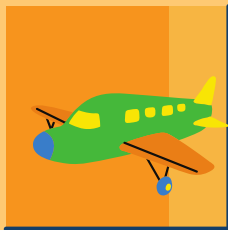
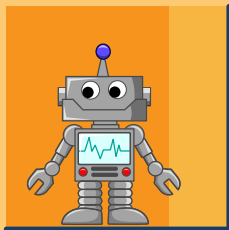


# Where is the \_\_\_\_?



# What do you want?

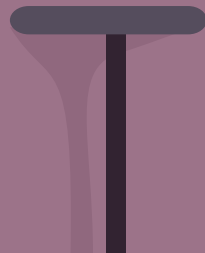
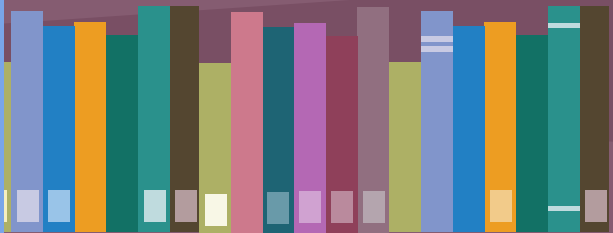
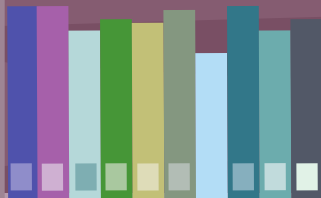
# I want a \_\_\_\_!



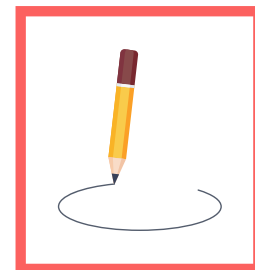
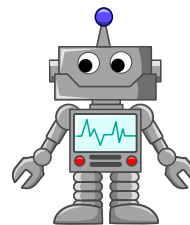
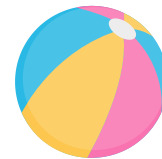
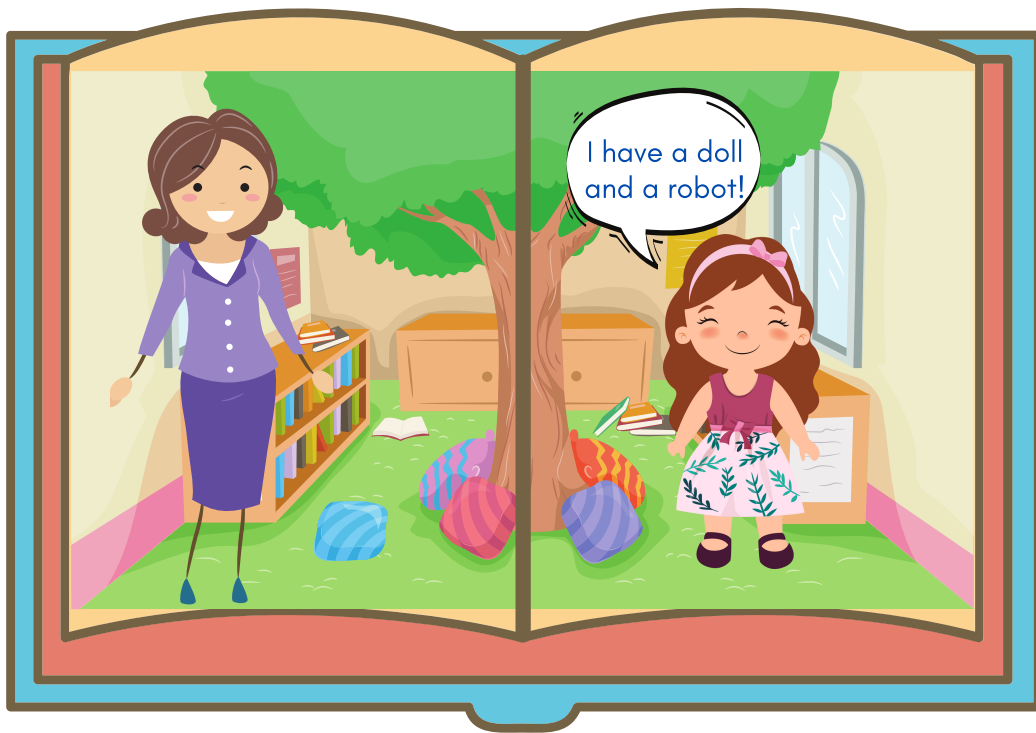
# Story Time!



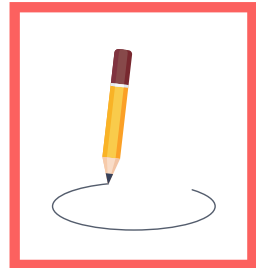
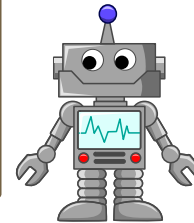
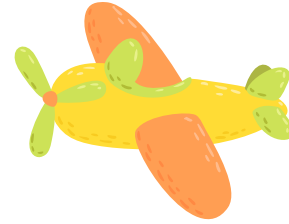
# What Do You Have?



# I have a doll and a robot!

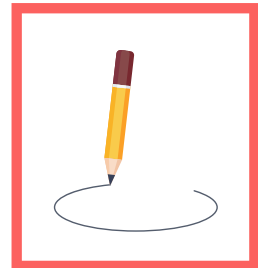
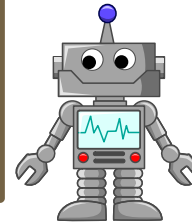
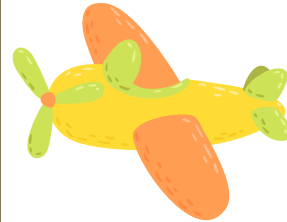


# I have a car and a truck!

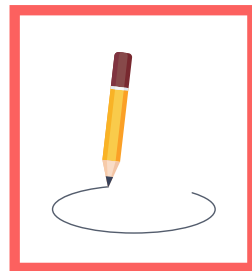
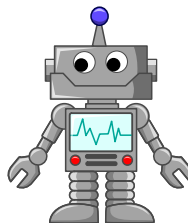
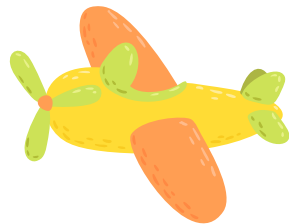
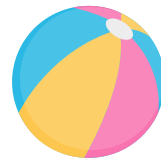




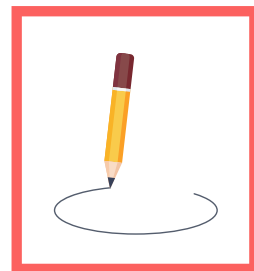
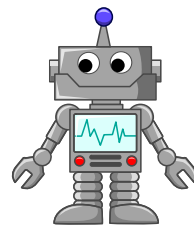
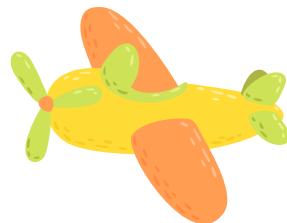
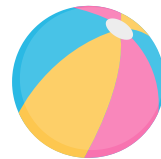
# I have a teddy bear and a puzzle!



# I have a plane and a ball!



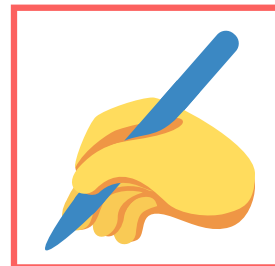
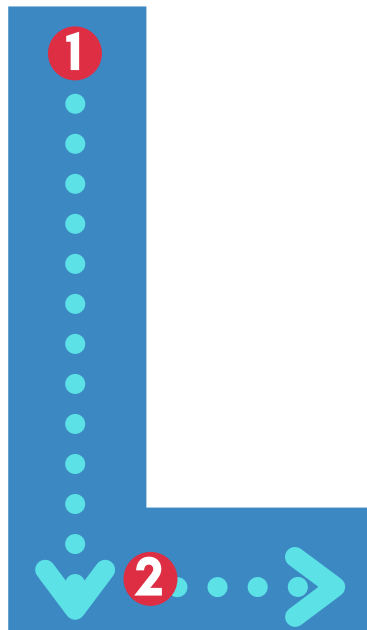
# I have all the toys!



A stylized illustration of a library. In the foreground, a large blue book is centered, with the words "The End" written in a bold, dark blue font. The book has a red bookmark sticking out from the bottom. Behind the book, there are three shelves of a bookshelf, each filled with books of various colors (green, blue, orange, purple, pink, brown, grey). The bookshelf is set against a dark purple wall. In the foreground, there are two dark grey chairs and a dark grey table, suggesting a reading area. The entire scene is set against a light blue background.

**The  
End**

# Write and say!



# Clap and say!



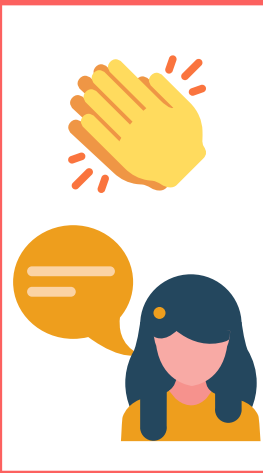
// //  
?



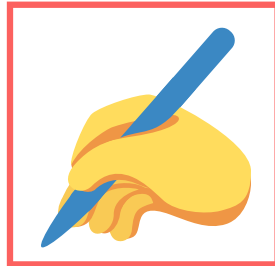
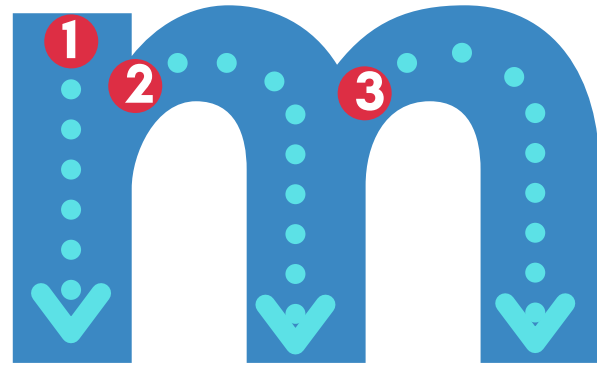
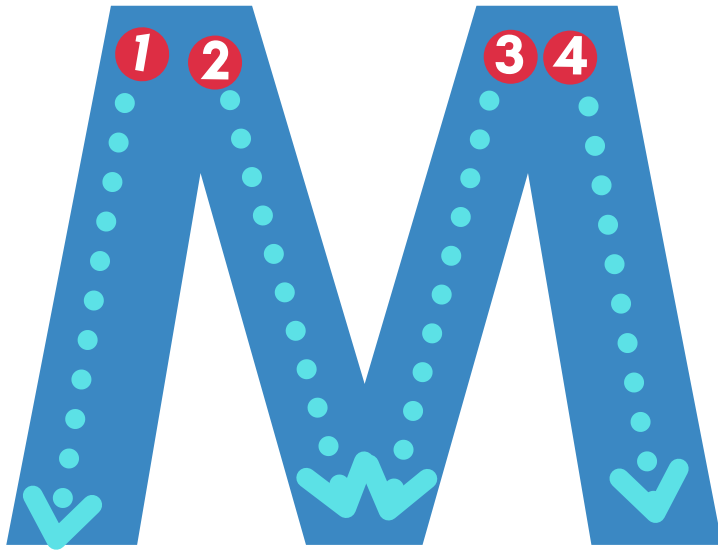
// //  
?



// //  
?



Write and say!



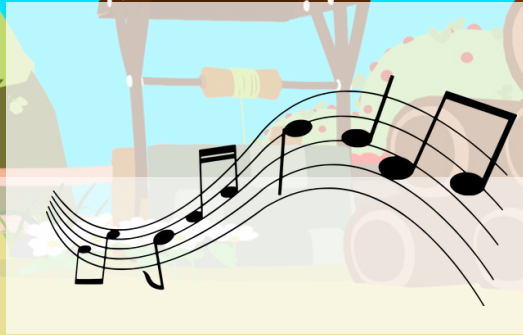
# Clap and say!



/m/ /m/  
?



/m/ /m/  
?

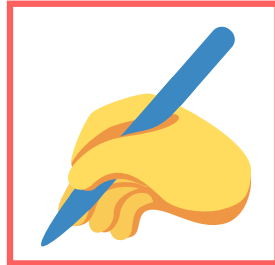
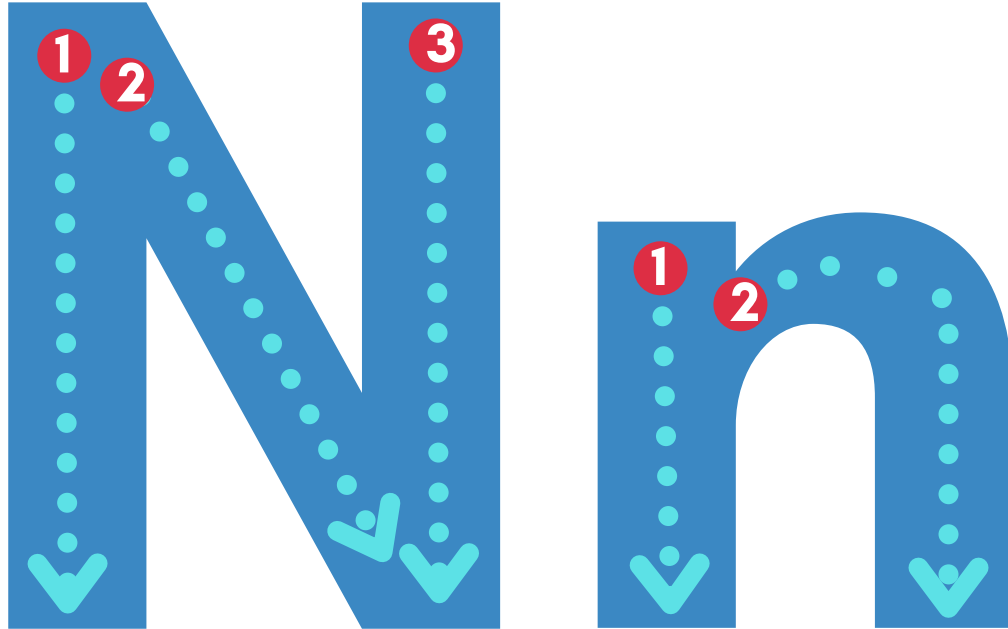


/m/ /m/  
?





Write and say!



# Clap and say!

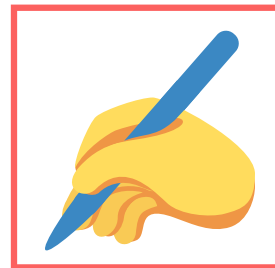
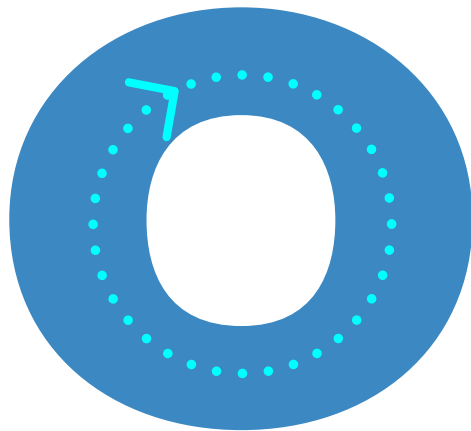
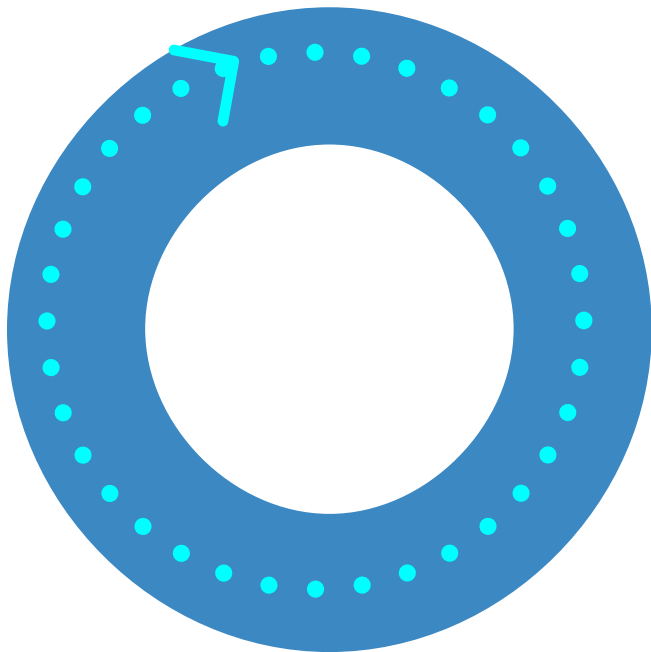
/n/ /n/  
?

/n/ /n/  
?

/n/ /n/  
?



**Write and say!**



# Clap and say!



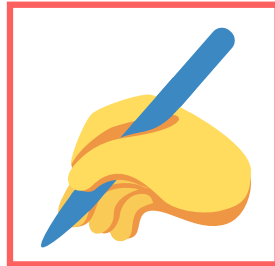
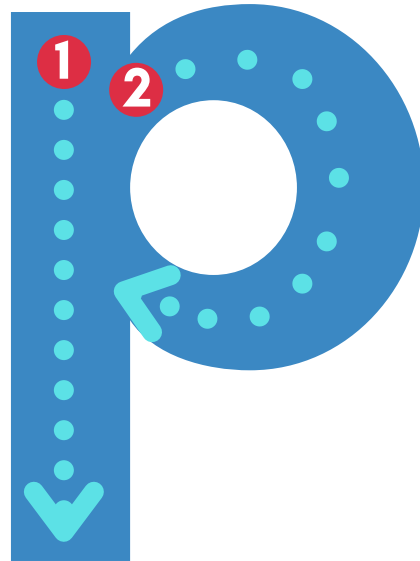
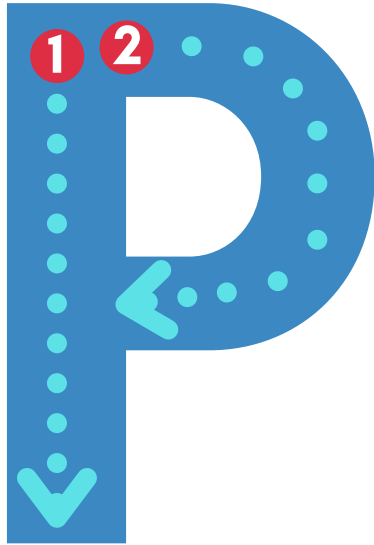
/o/ /o/  
?

/o/ /o/  
?

/o/ /o/  
?

This box contains three icons: a yellow clapping hands icon at the top, a yellow speech bubble icon in the middle, and a cartoon girl with dark hair and a yellow shirt at the bottom.

**Write and say!**



# Clap and say!

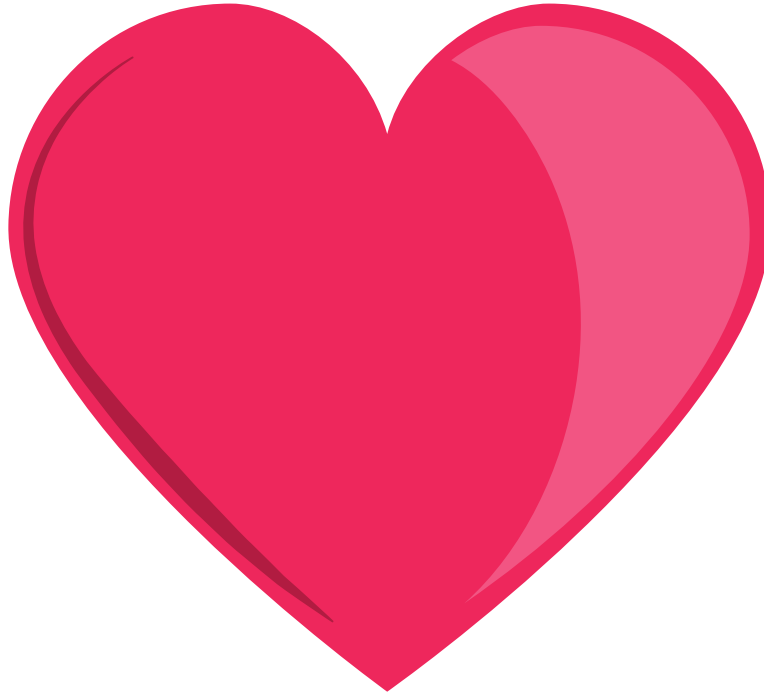


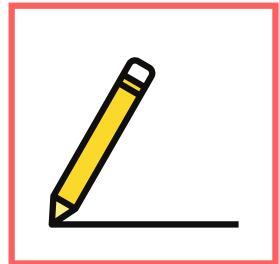
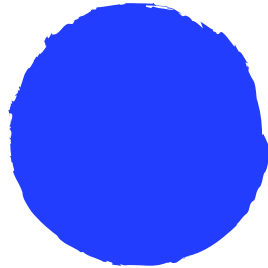
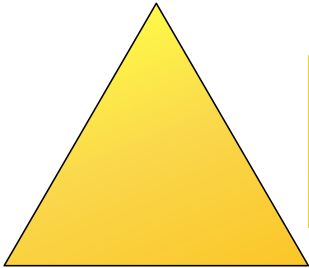
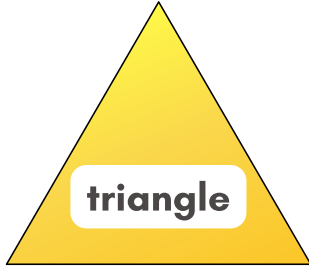
/p/ /p/  
?

/p/ /p/  
?

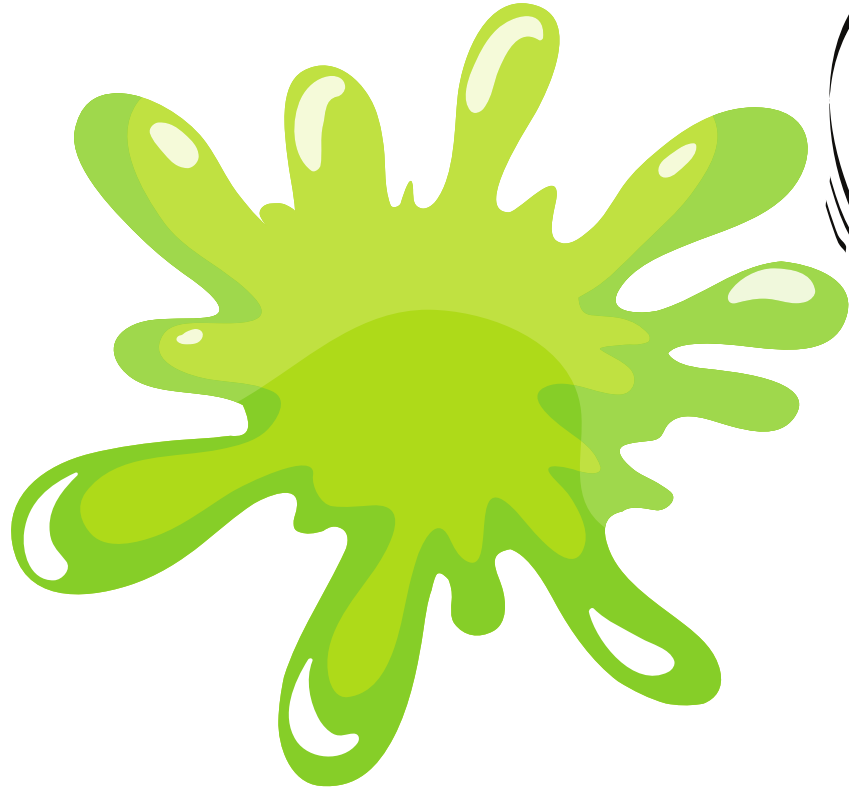
/p/ /p/  
?

# What is it? It is a...









It is \_\_\_\_\_!



# Story Time!



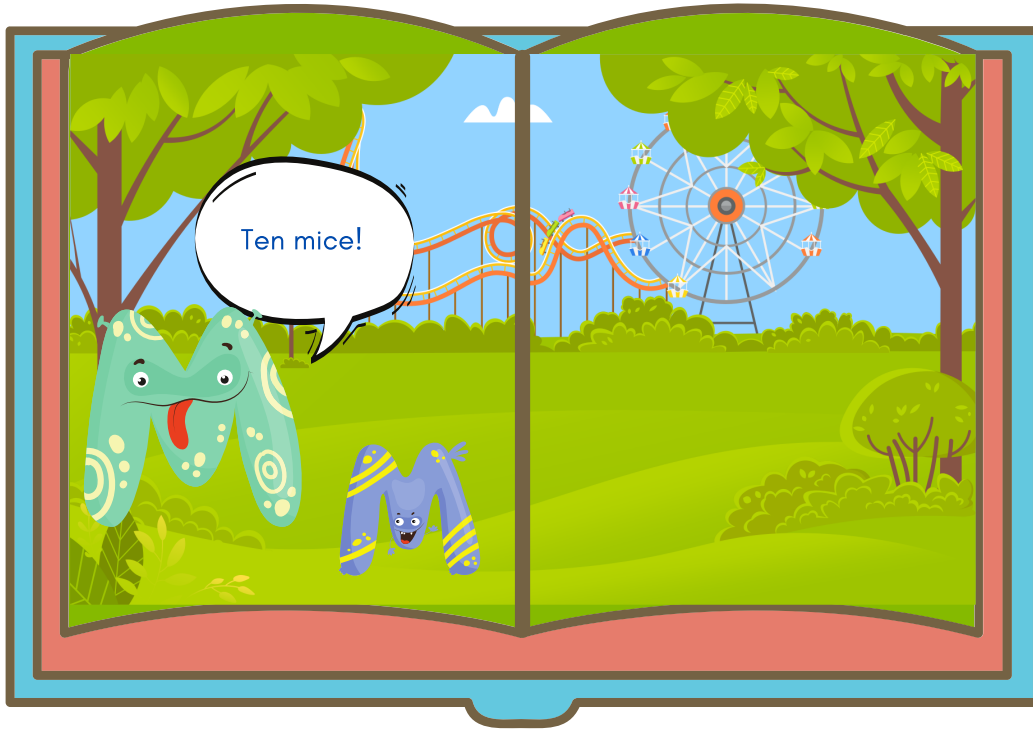
# Monster Letters!



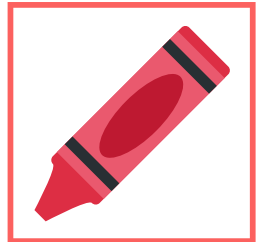
# Ten leaves!



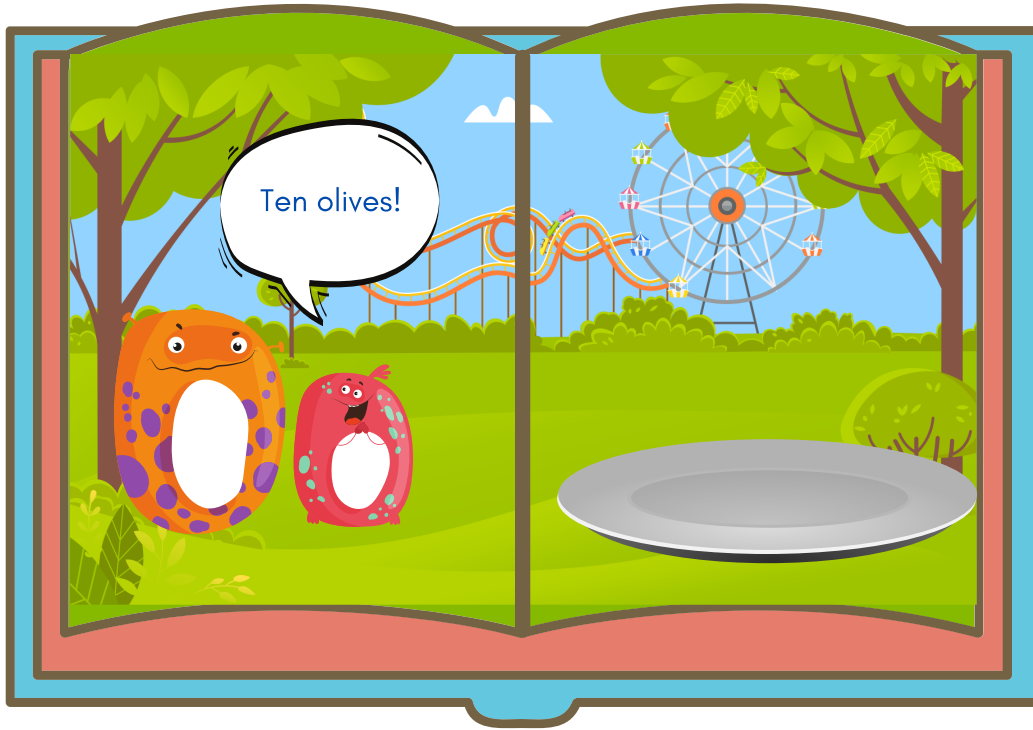
# Ten mice!



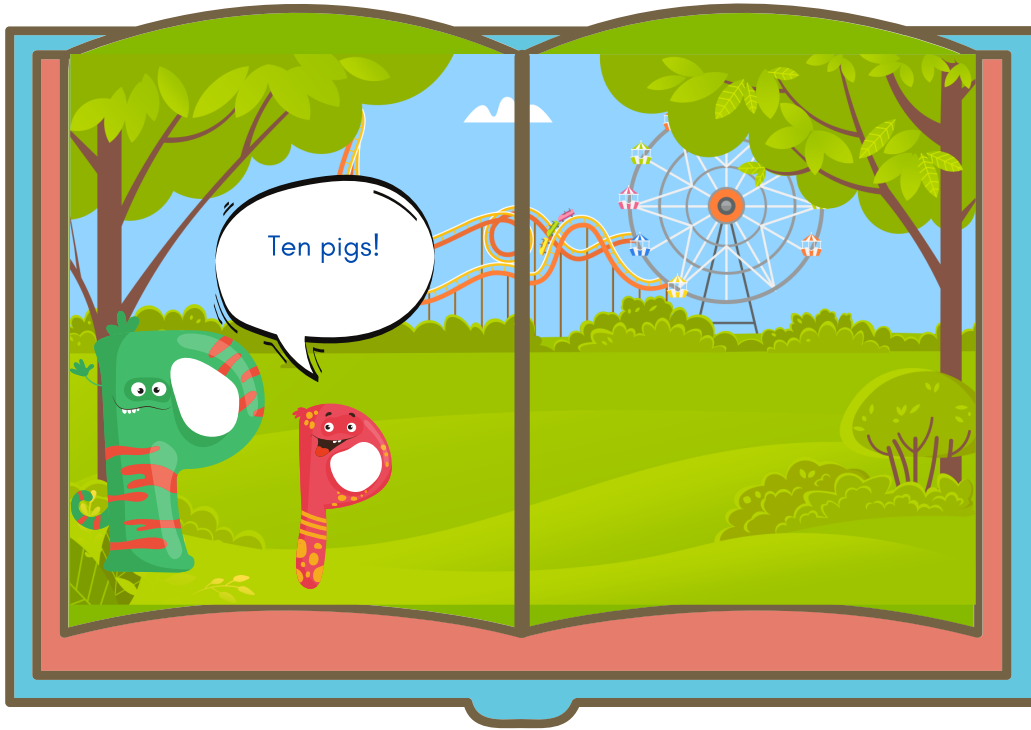
# Ten ninjas!



# Ten olives!



# Ten pigs!

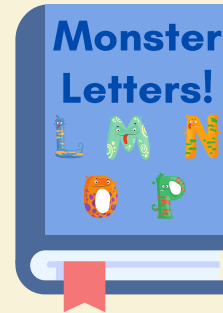
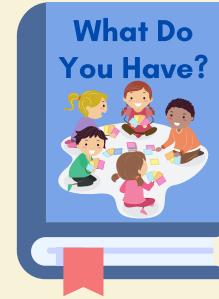
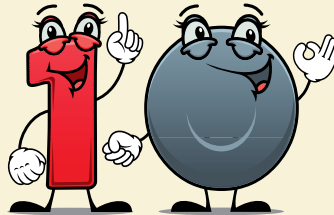
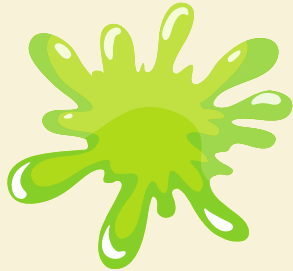
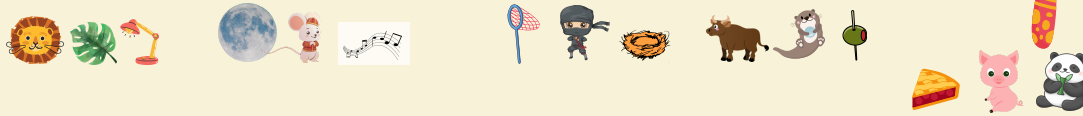




A stylized illustration of a library. In the foreground, a large blue book is centered, with the words "The End" written in a bold, dark blue font. The book has a red bookmark sticking out from the bottom. Behind the book, there are three shelves filled with various colorful books. The shelves are set against a dark purple wall. In the foreground, there are two dark grey chairs and a table, suggesting a reading area. The overall style is flat and modern.

**The  
End**

# Review:



# Good job!

