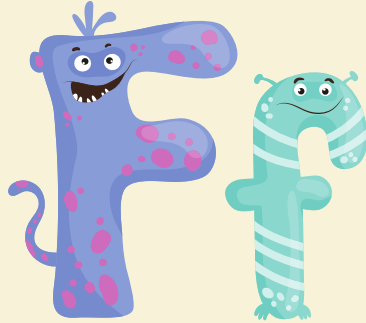
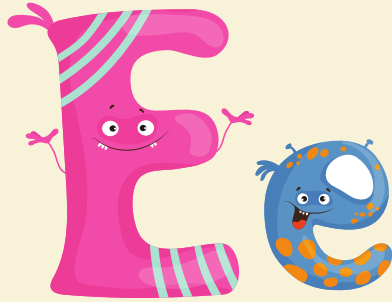


A vibrant children's playroom with a light blue wall. On the wall are large cutouts of a green dinosaur, a yellow giraffe, and a blue elephant. A yellow chair with a teddy bear on it stands next to a white table with a colorful polka-dot cloth. In the center is a small yellow table with a blue chair. The floor is covered with various toys: colorful blocks, a stacking ring tower, a blue ball, and two teddy bears. A window with blue shutters is on the right.

Welcome!

LV0 U3 L5

In this lesson:



egg



elephant



elbow



fish



flower



fire



goat



game



gift

A vibrant collection of colorful wooden letters in various colors (red, blue, yellow, orange, green, pink, white) scattered on a light-colored surface. The letters are of different sizes and are arranged in a dense, overlapping manner. In the center, there is a semi-transparent white rectangular box with a thin cyan border. Inside this box, the word "Letters" is written in a large, bold, blue sans-serif font. Below it, the letters "Ee Ff Gg" are written in a smaller, purple sans-serif font.

Letters

Ee Ff Gg



Big E

E, E, big E



/e/ /e/ /e/





small e

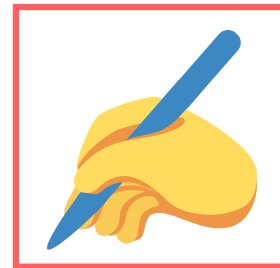
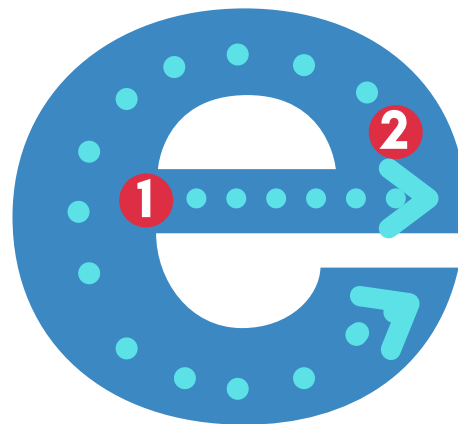
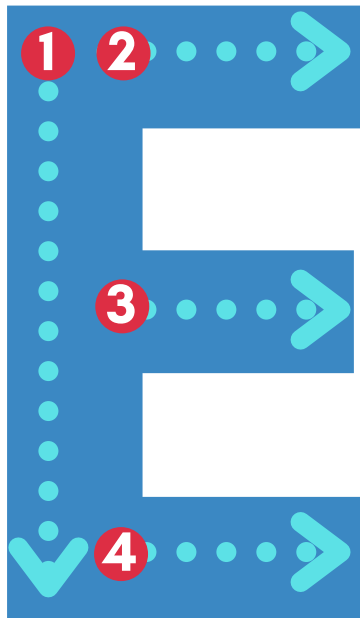
e, e, small e

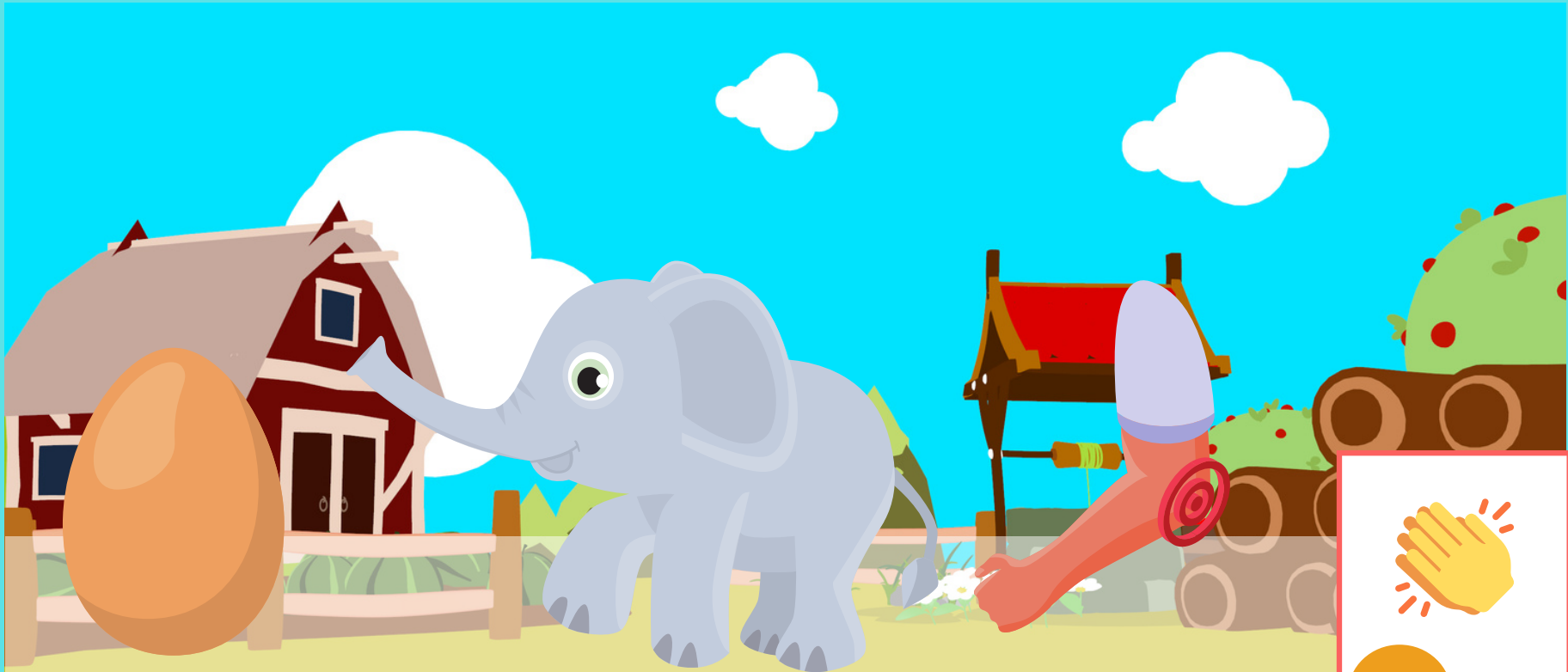


/e/ /e/ /e/



Write and say!





/e/ /e/
egg

/e/ /e/
elephant

/e/ /e/
elbow





Big F

F, F, big F



/f/

/f/

/f/





small f

f, f, small f



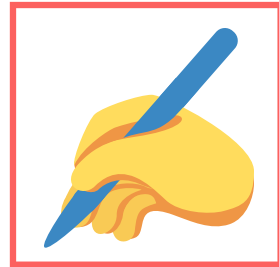
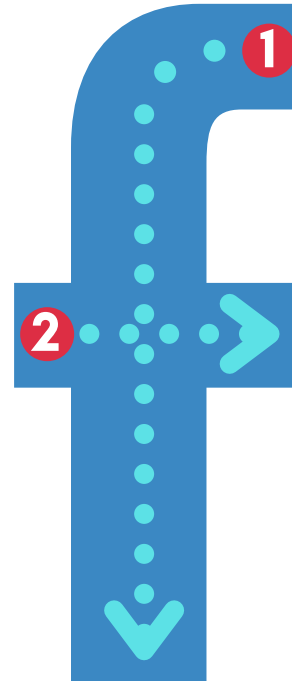
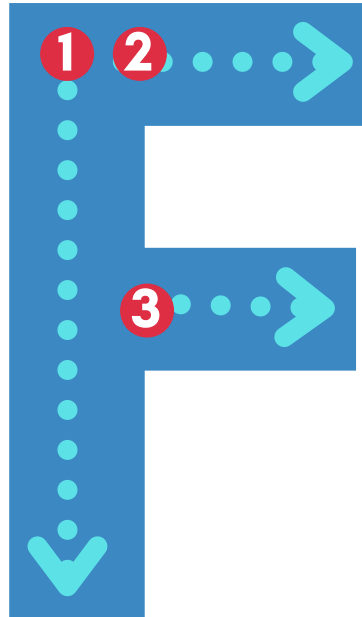
/f/

/f/

/f/



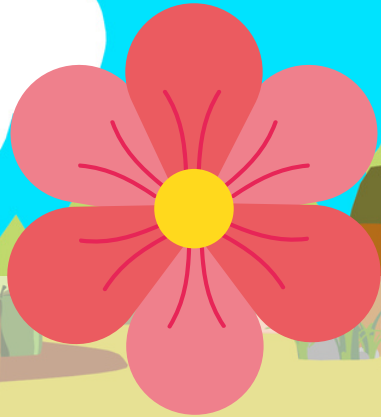
Write and say!



Clap and say!



/f/ /f/
fish



/f/ /f/
flower



/f/ /f/
fire





Big G

G, G, big G



/g/

/g/

/g/





small g

g, g, small g



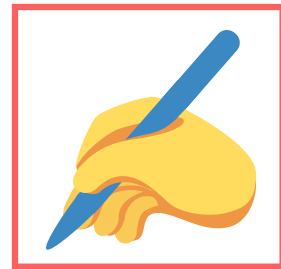
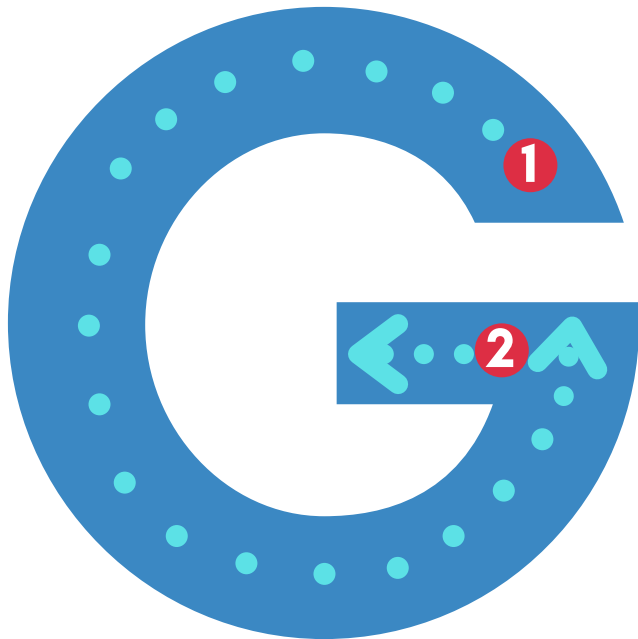
/g/

/g/

/g/



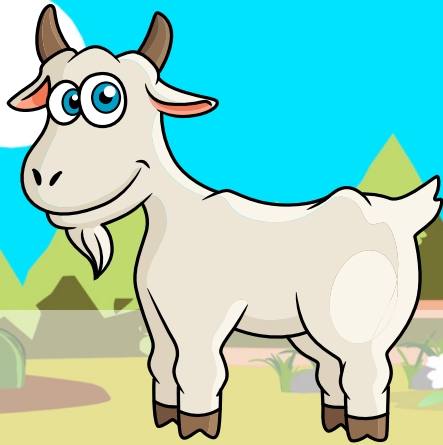
Write and say!



Clap and say!



/g/ /g/
game



/g/ /g/
goat



/g/ /g/
gift



Say the letter!

E

F

G



Say the letter!

e

f

g

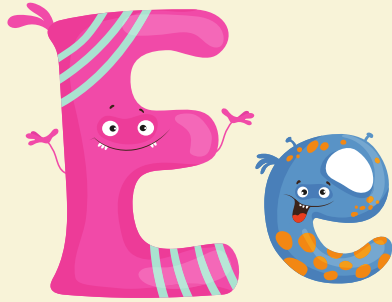




Circle the ____!



Review:



egg



elephant



elbow



fish



flower



fire



goat



game



gift

Good job!

