

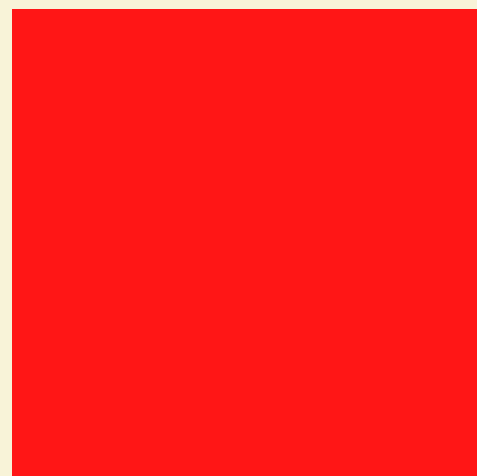
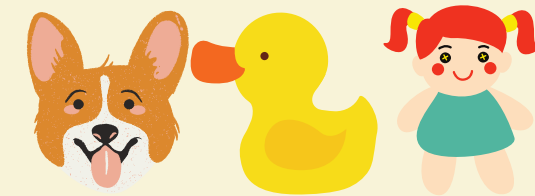
A vibrant children's playroom with a light blue wall. On the wall are large cutouts of a green dinosaur, a yellow giraffe, and a blue elephant. A yellow chair and a blue chair are positioned around a yellow table. The floor is covered with various toys, including colorful blocks, a stacking ring toy, and two teddy bears. A window with white blinds is on the right side.

welcome!

LV0 U2 L6

In this lesson:

Aa Bb Cc Dd




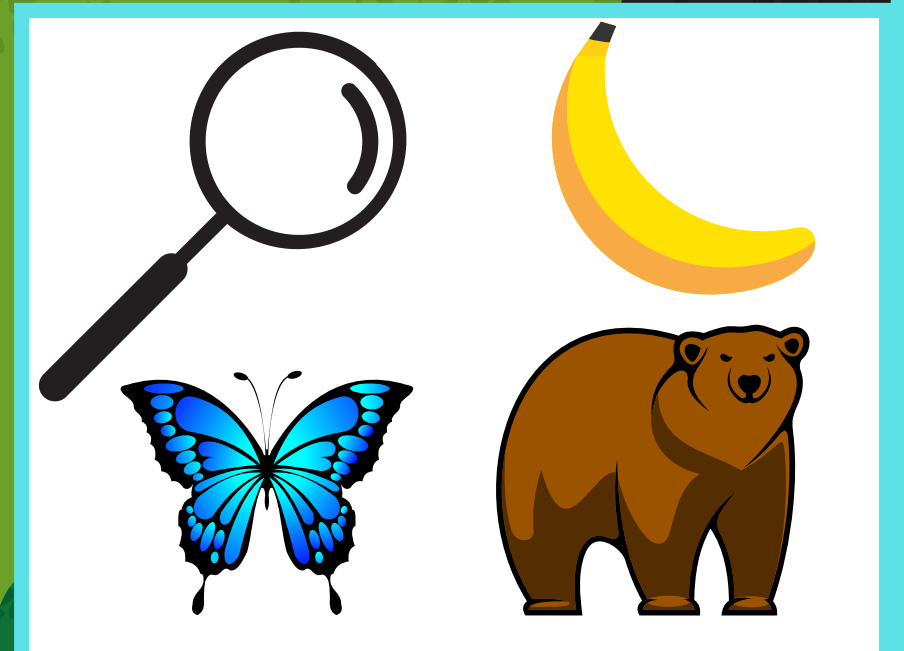
It is a (square).

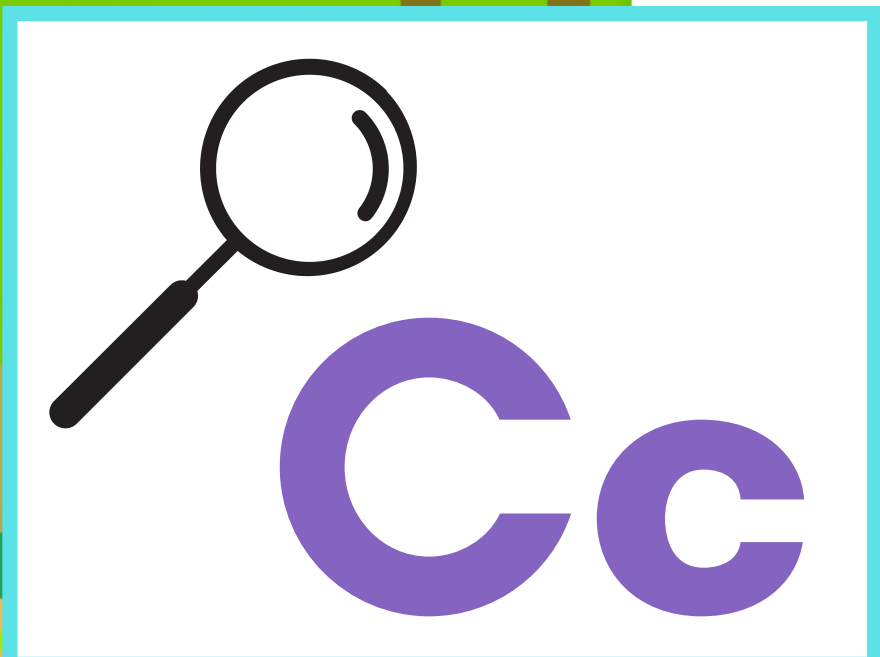
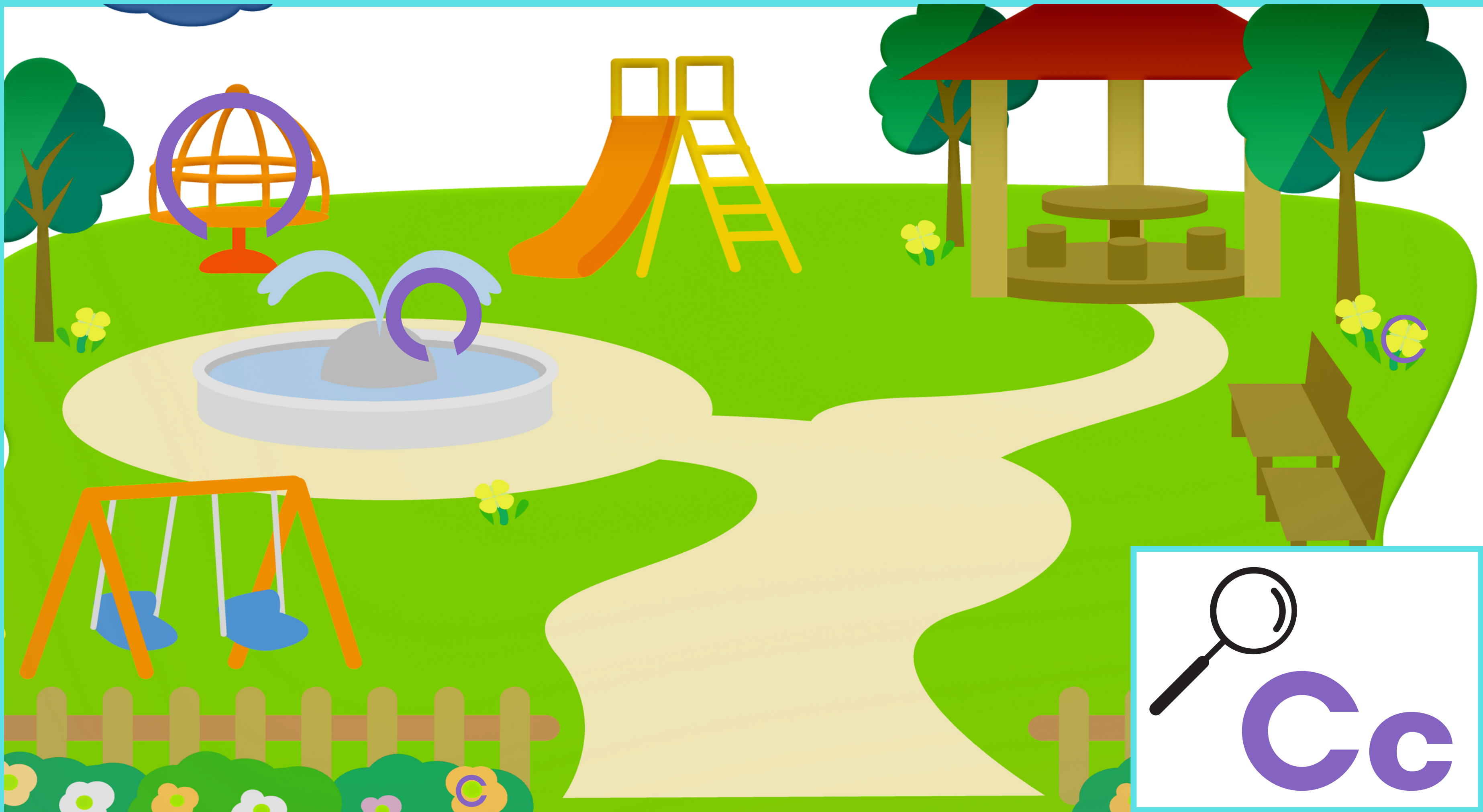


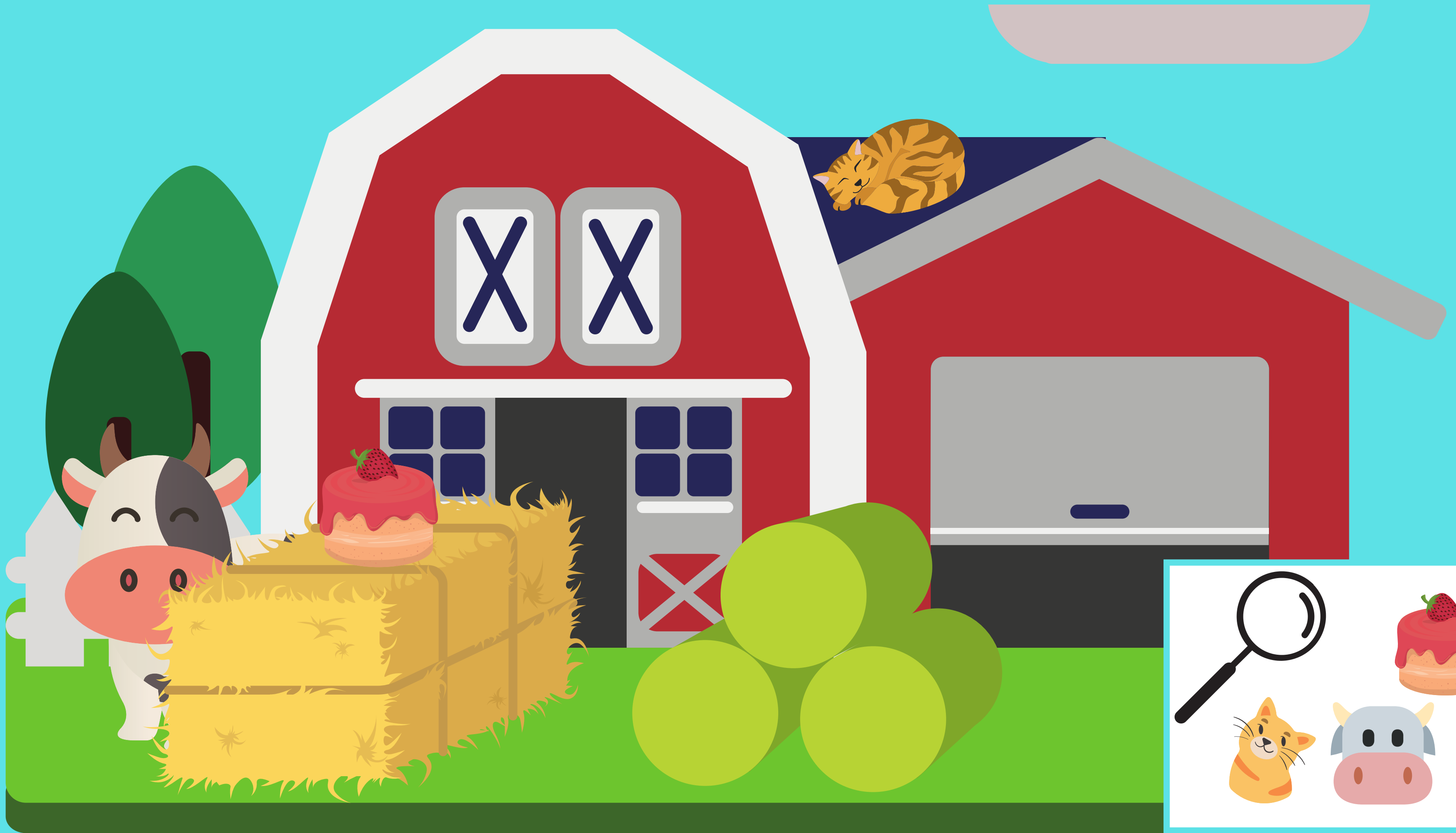


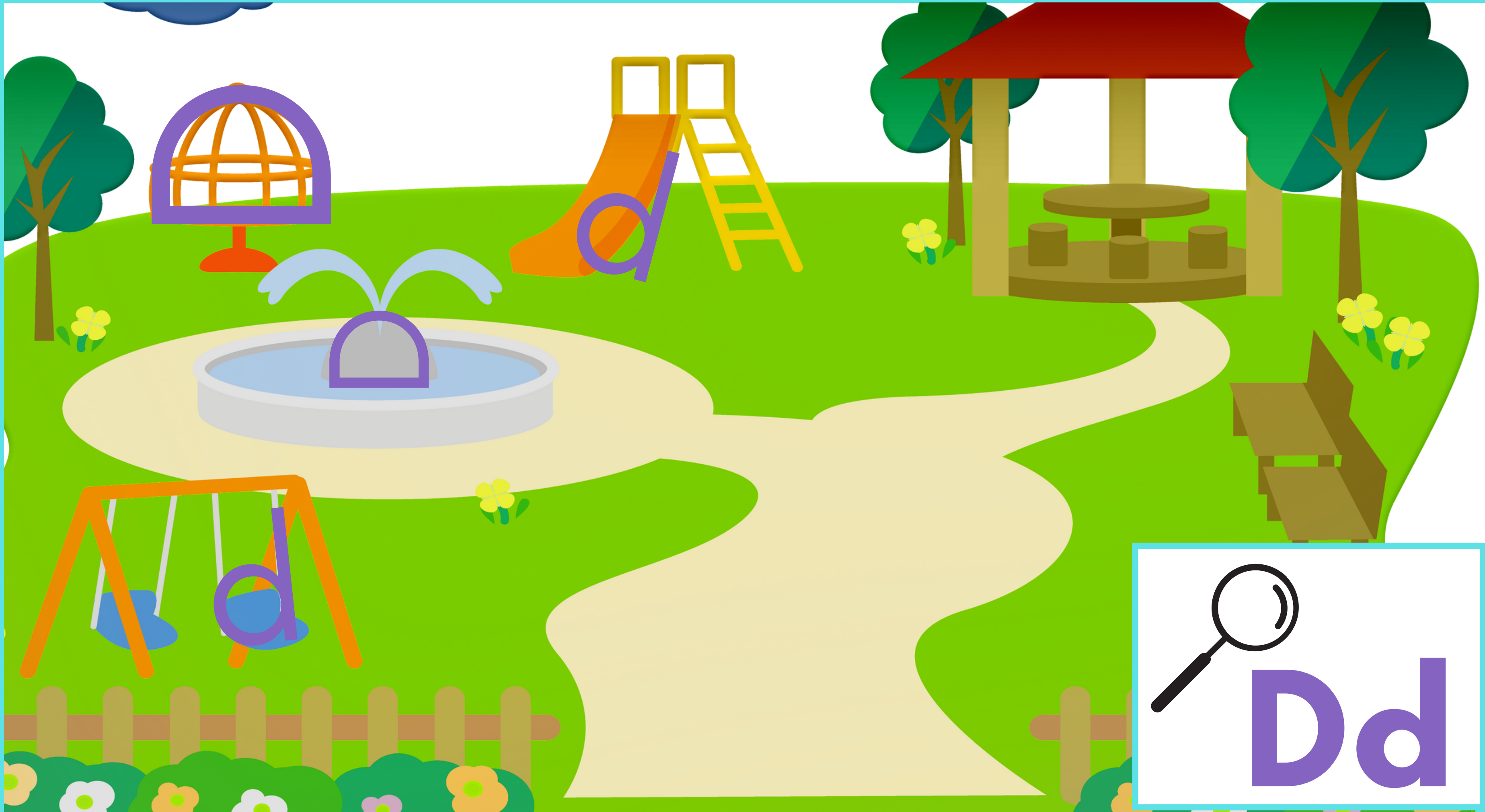



Bb

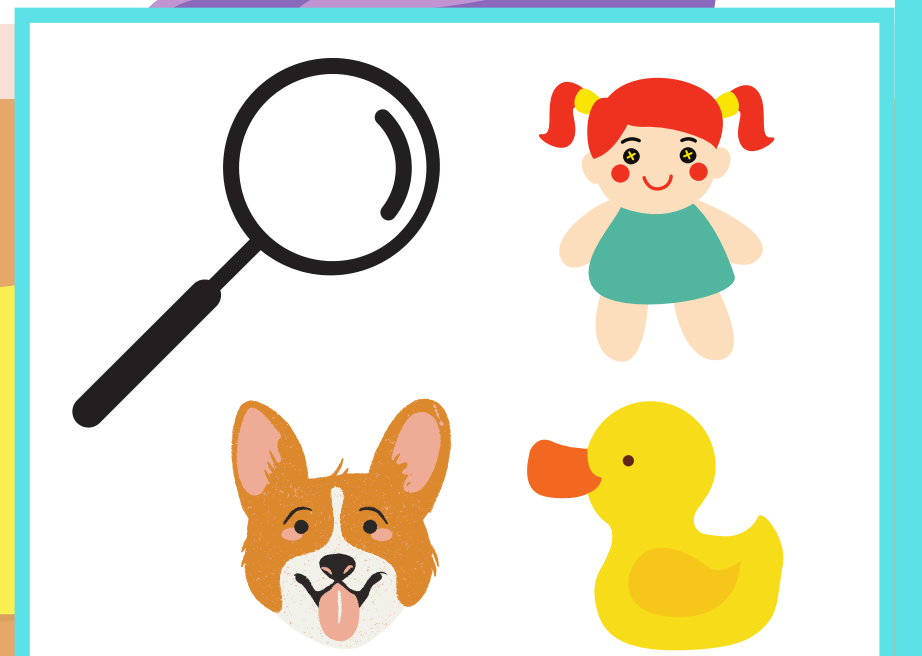
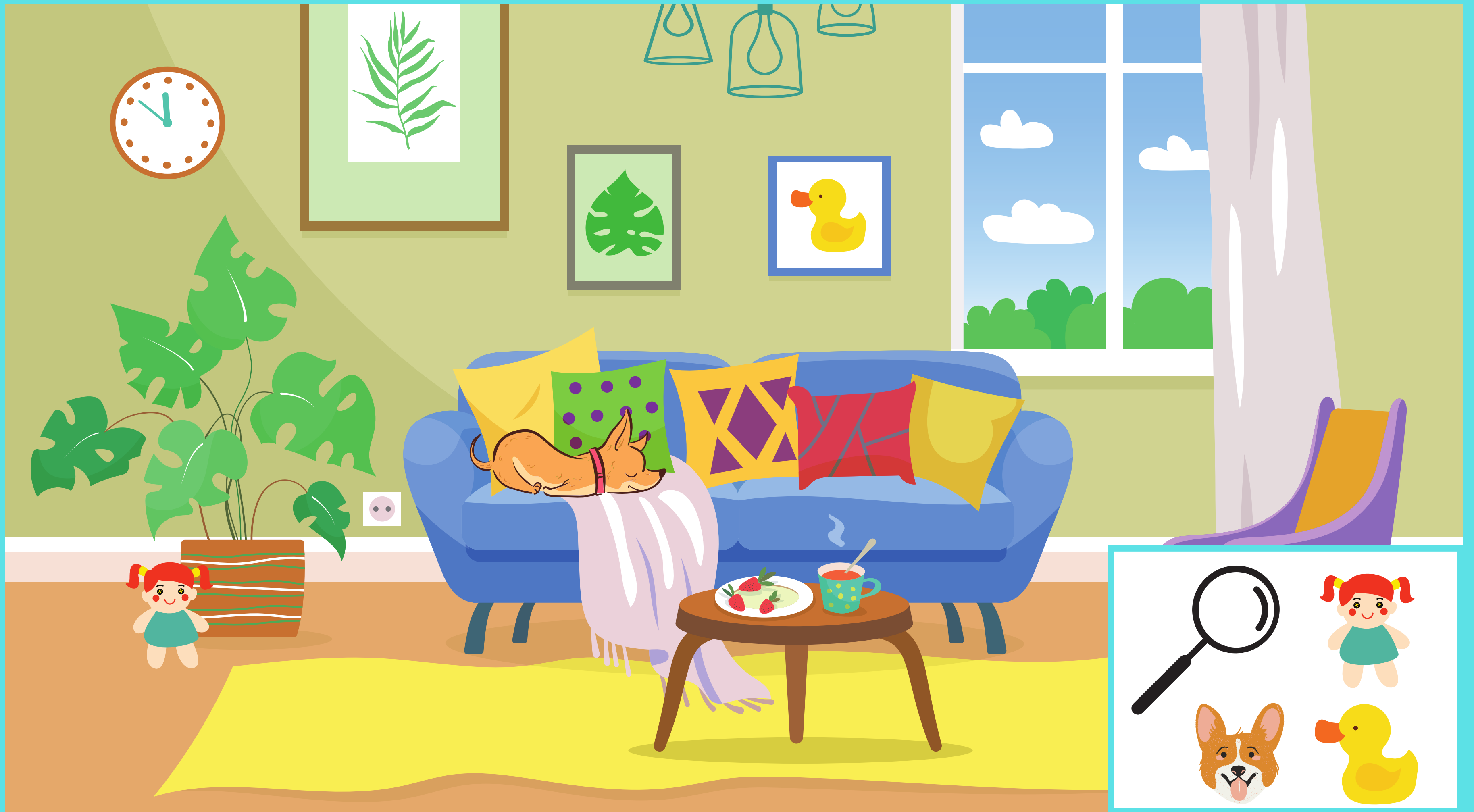






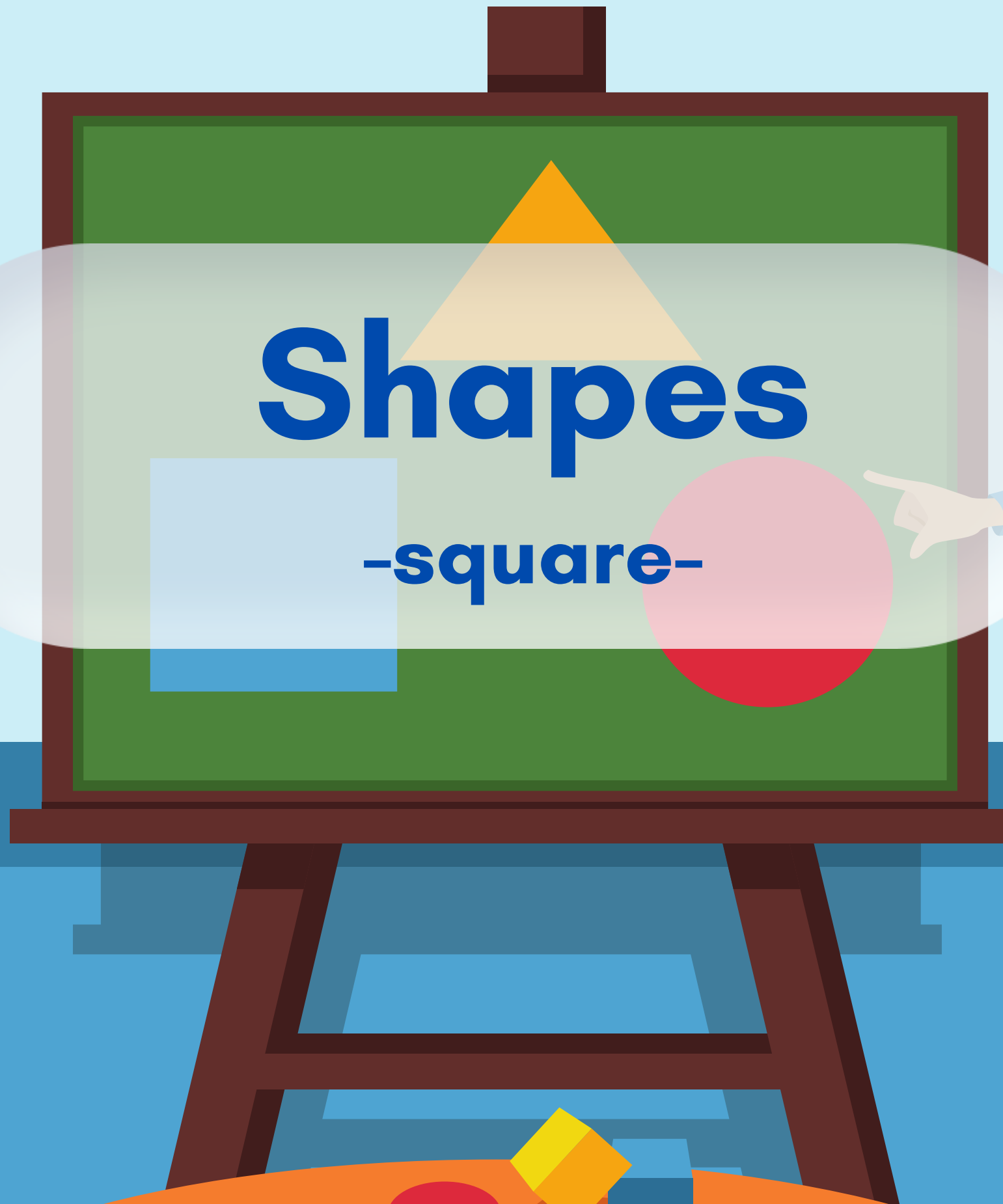
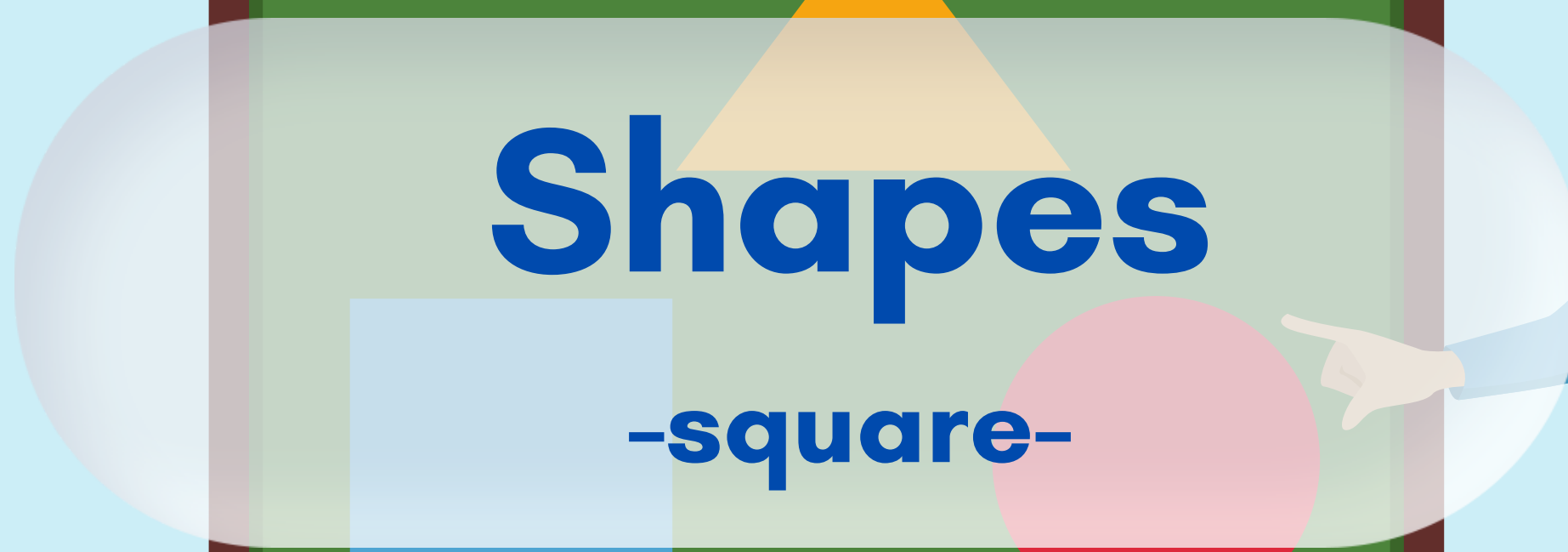


 Dd



Shapes

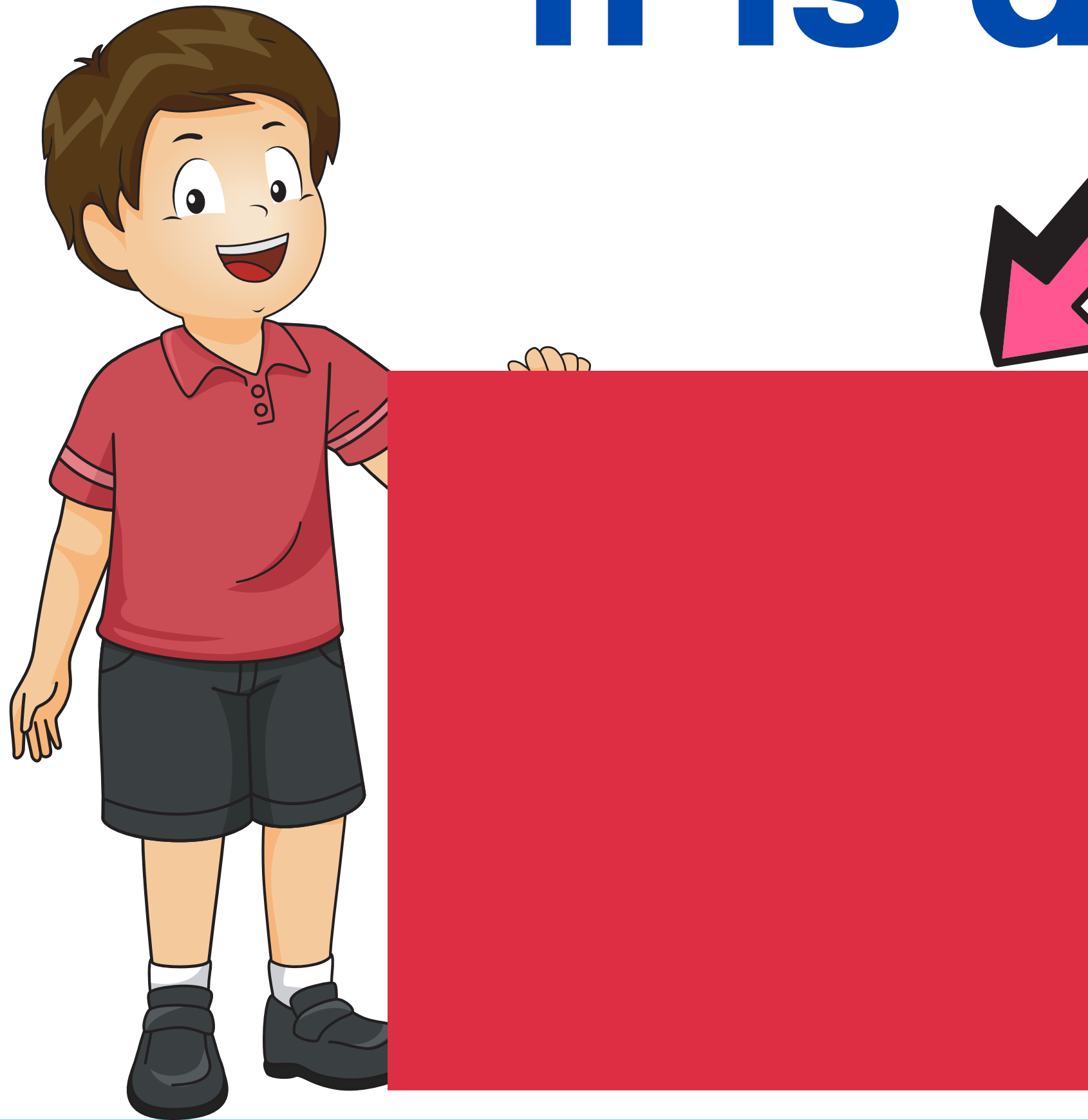
-square-



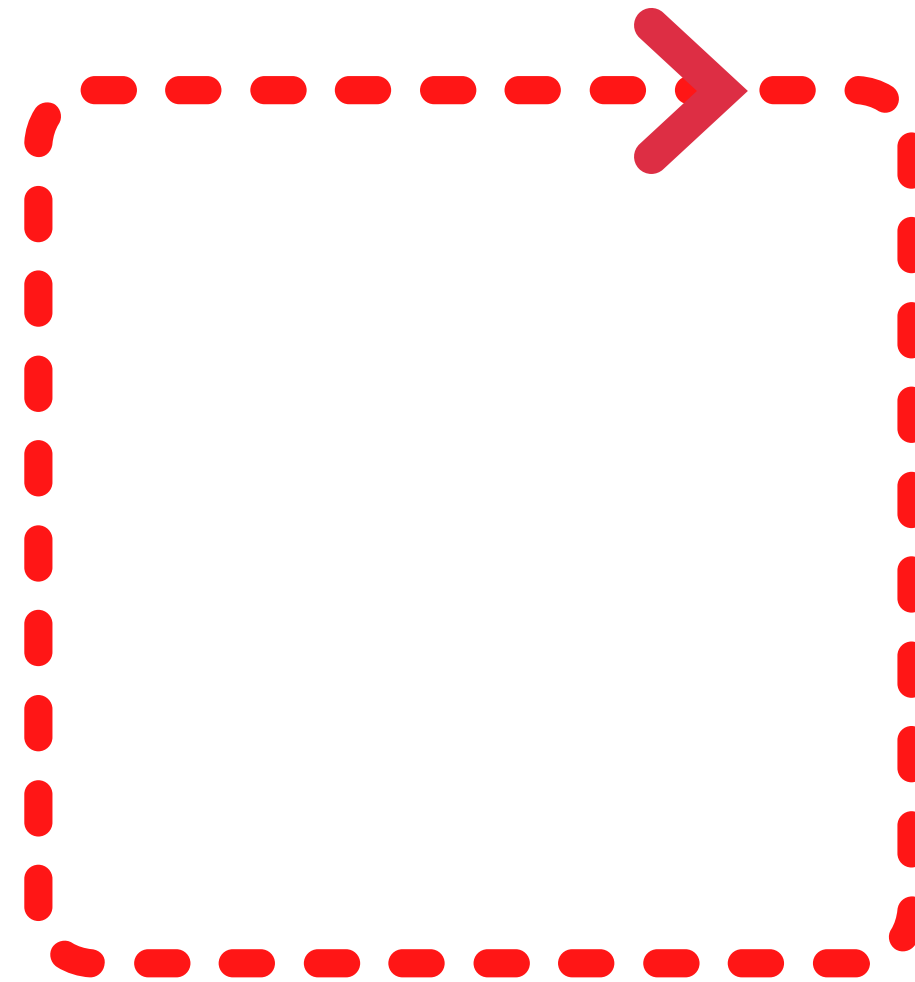
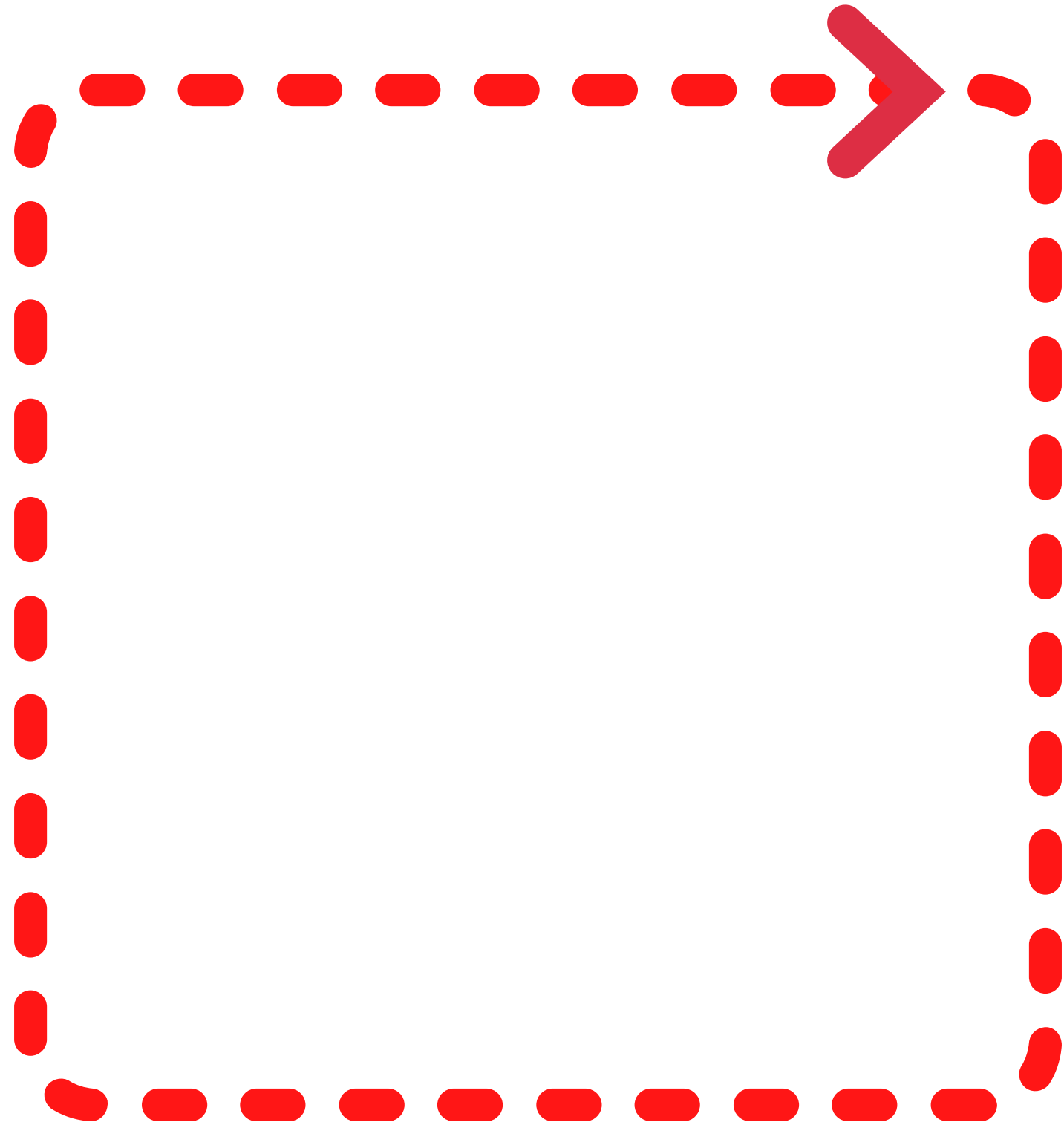


Square

It is a square.



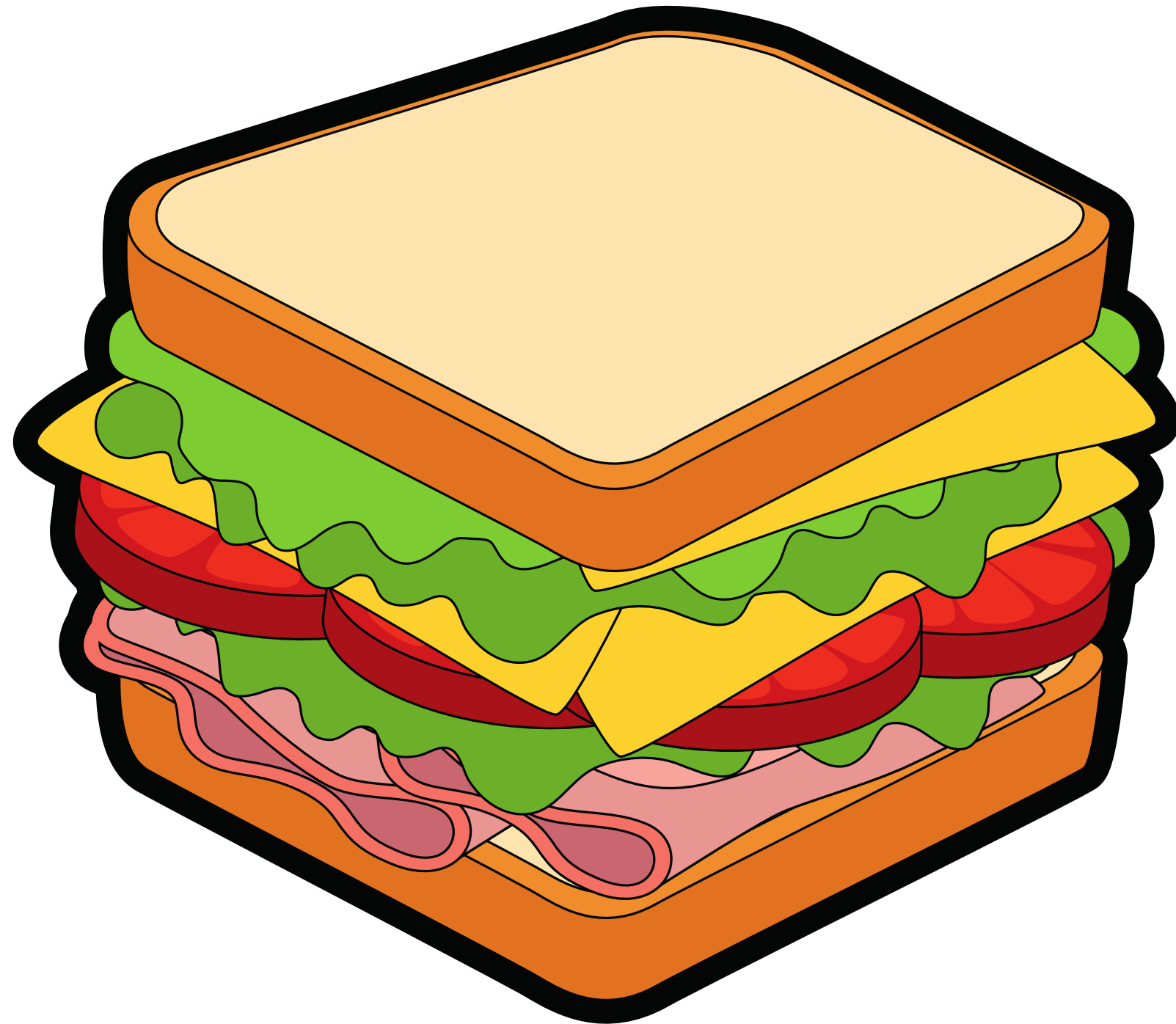
Draw a square!



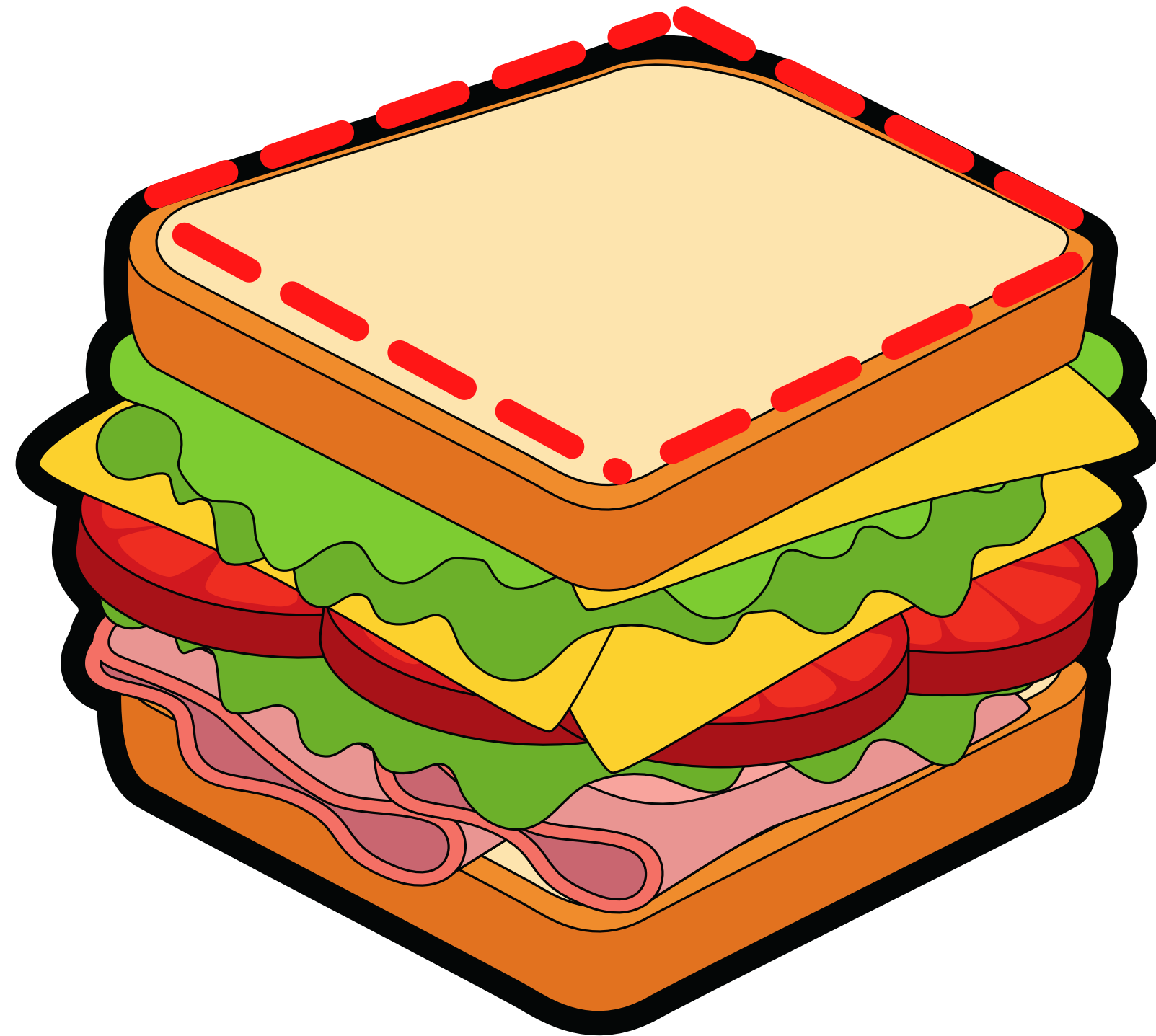
It is a square!



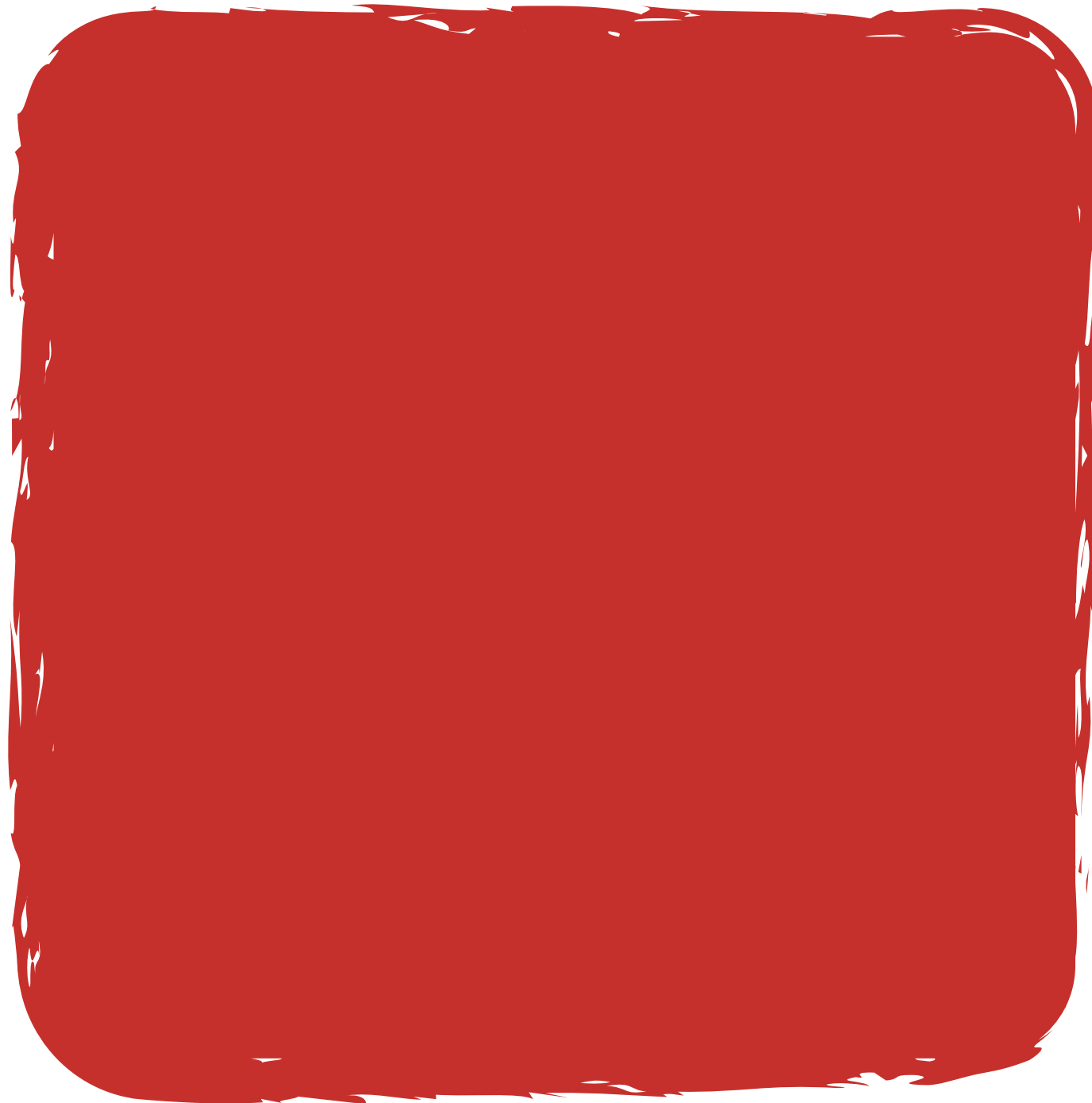
A sandwich...



A square!

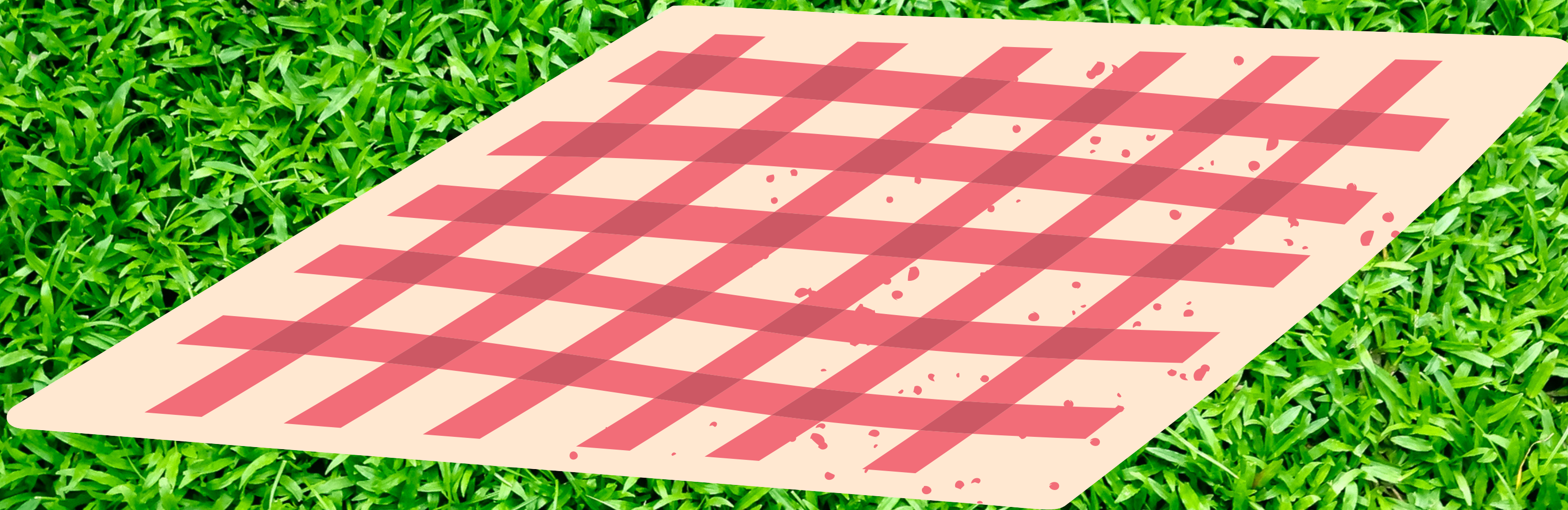


What is it? It is a ____.



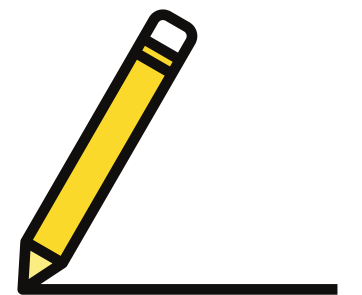
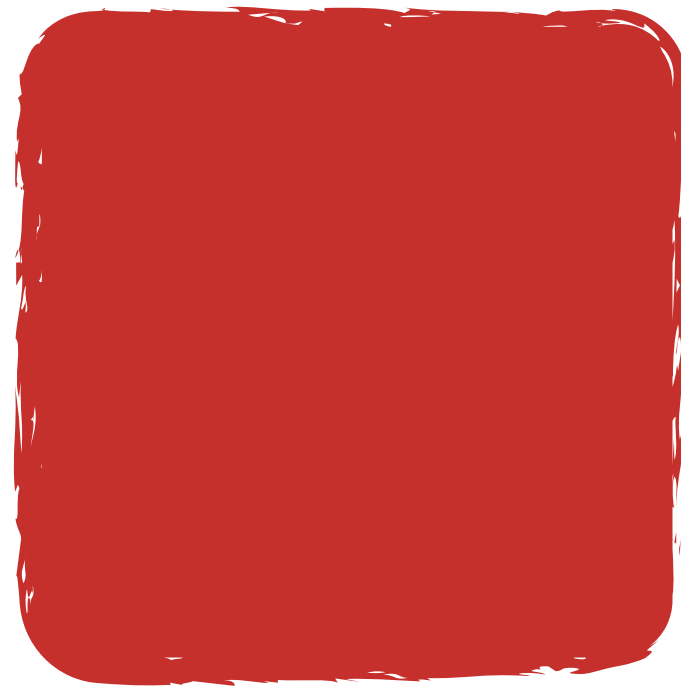
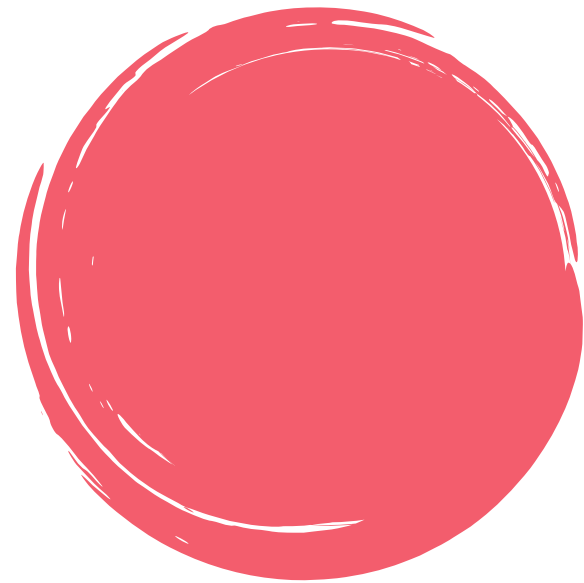
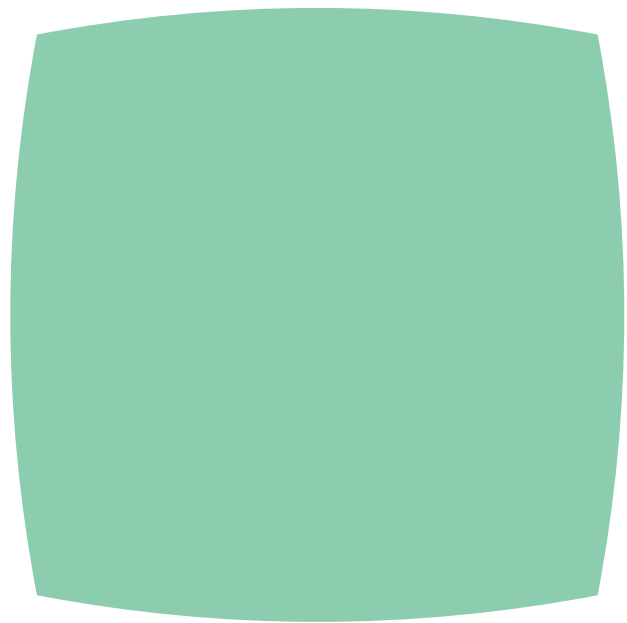


Drag the squares to the blanket.

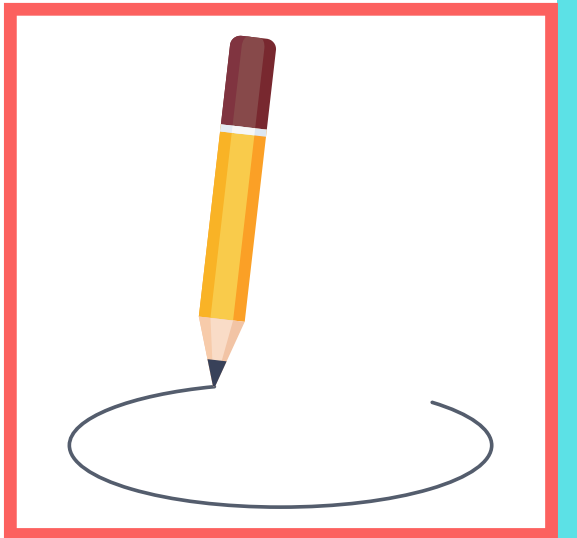
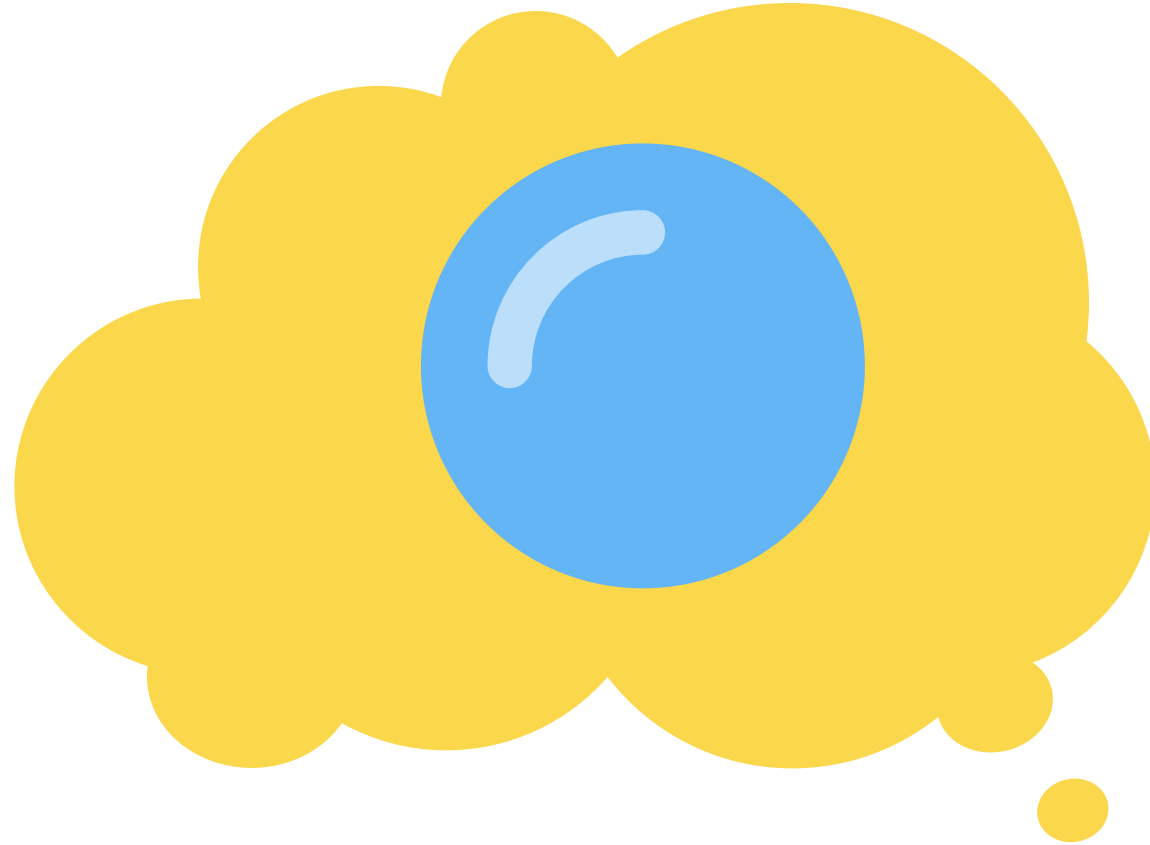


Square

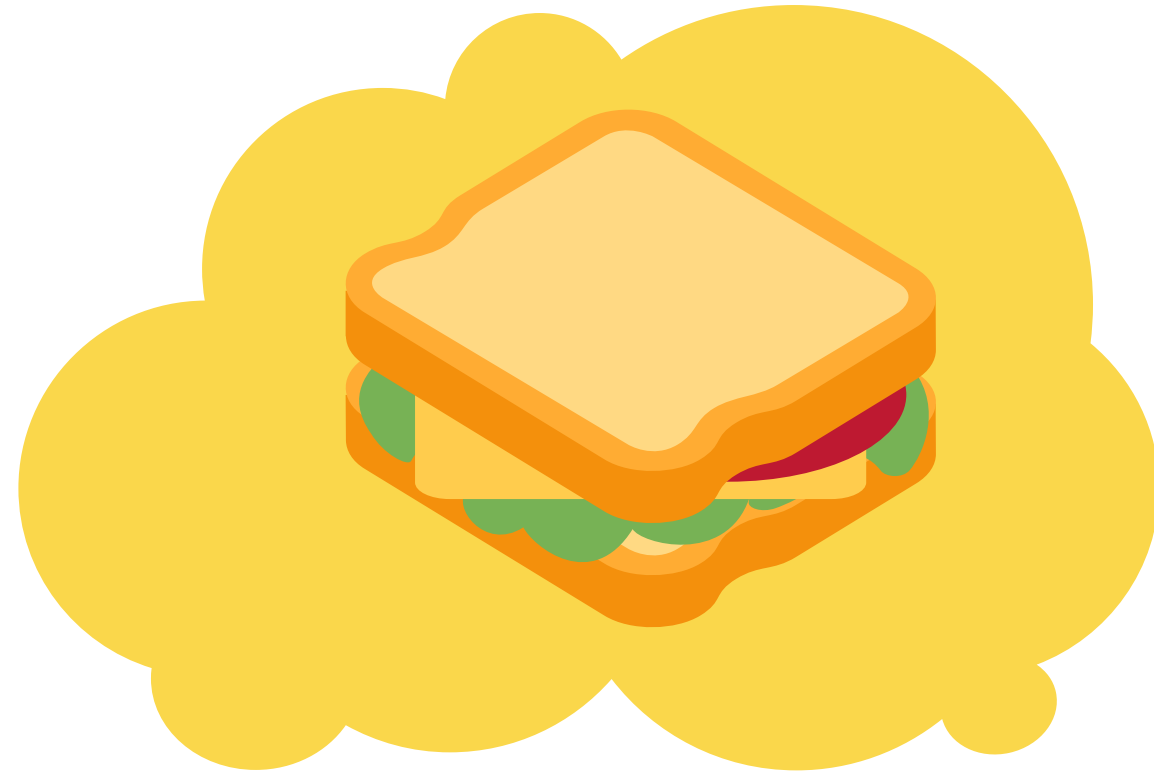
Circle



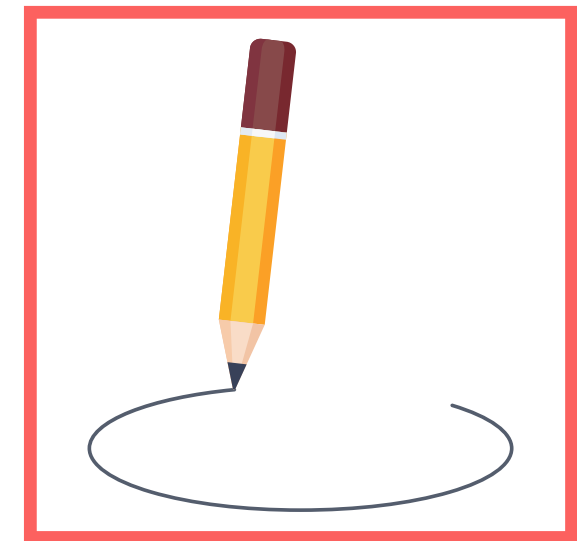
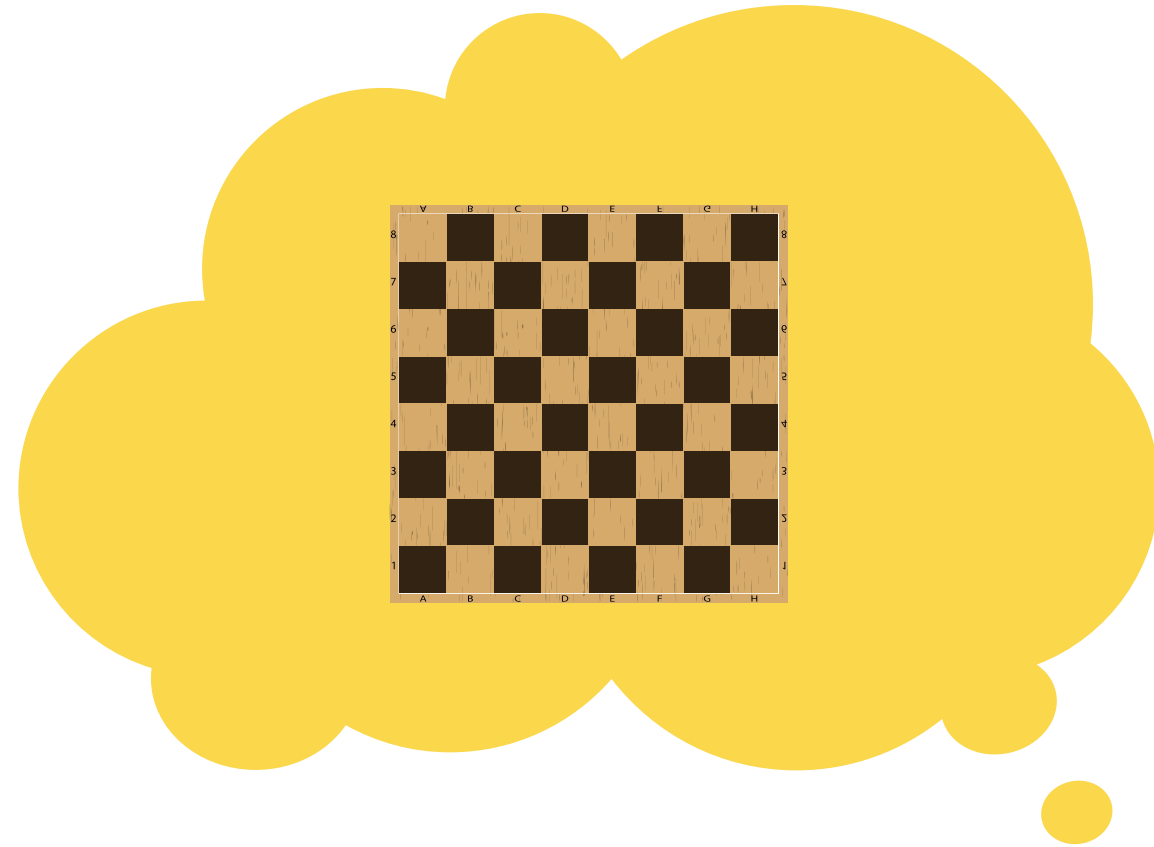
**Which one
is a square?**



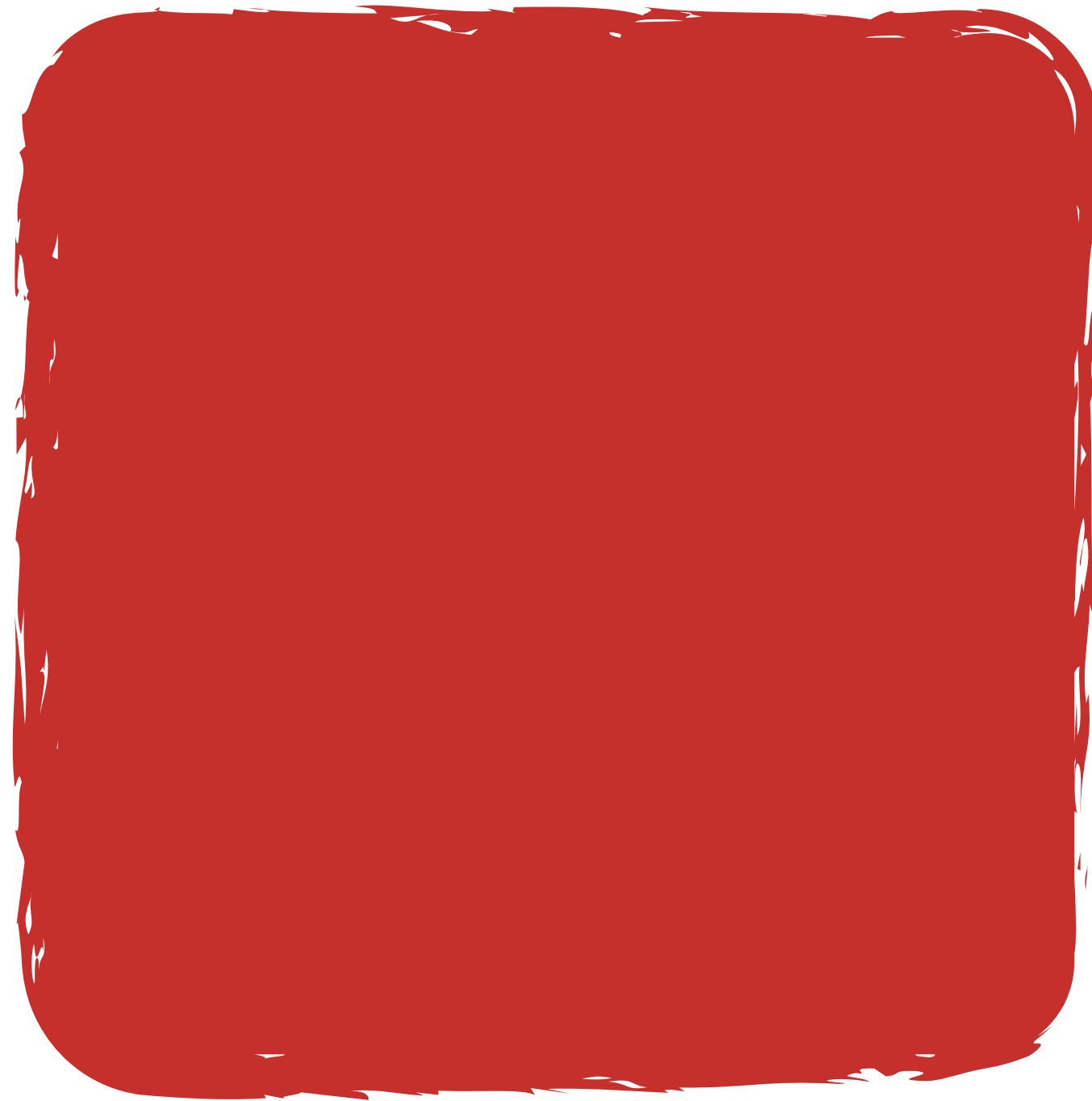
**Which one
is a square?**



**Which one
is a square?**

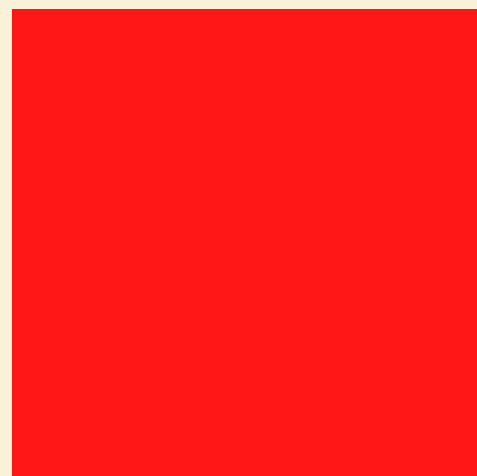
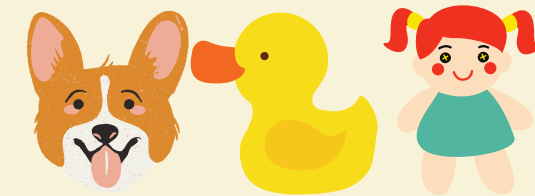


What is it? It is a...



Review:

Aa Bb Cc Dd



It is a (square).

Good job!

