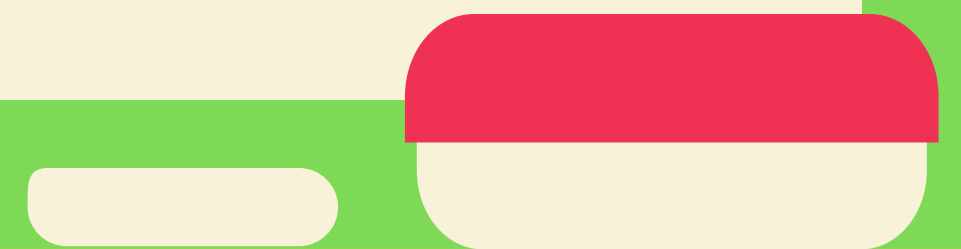
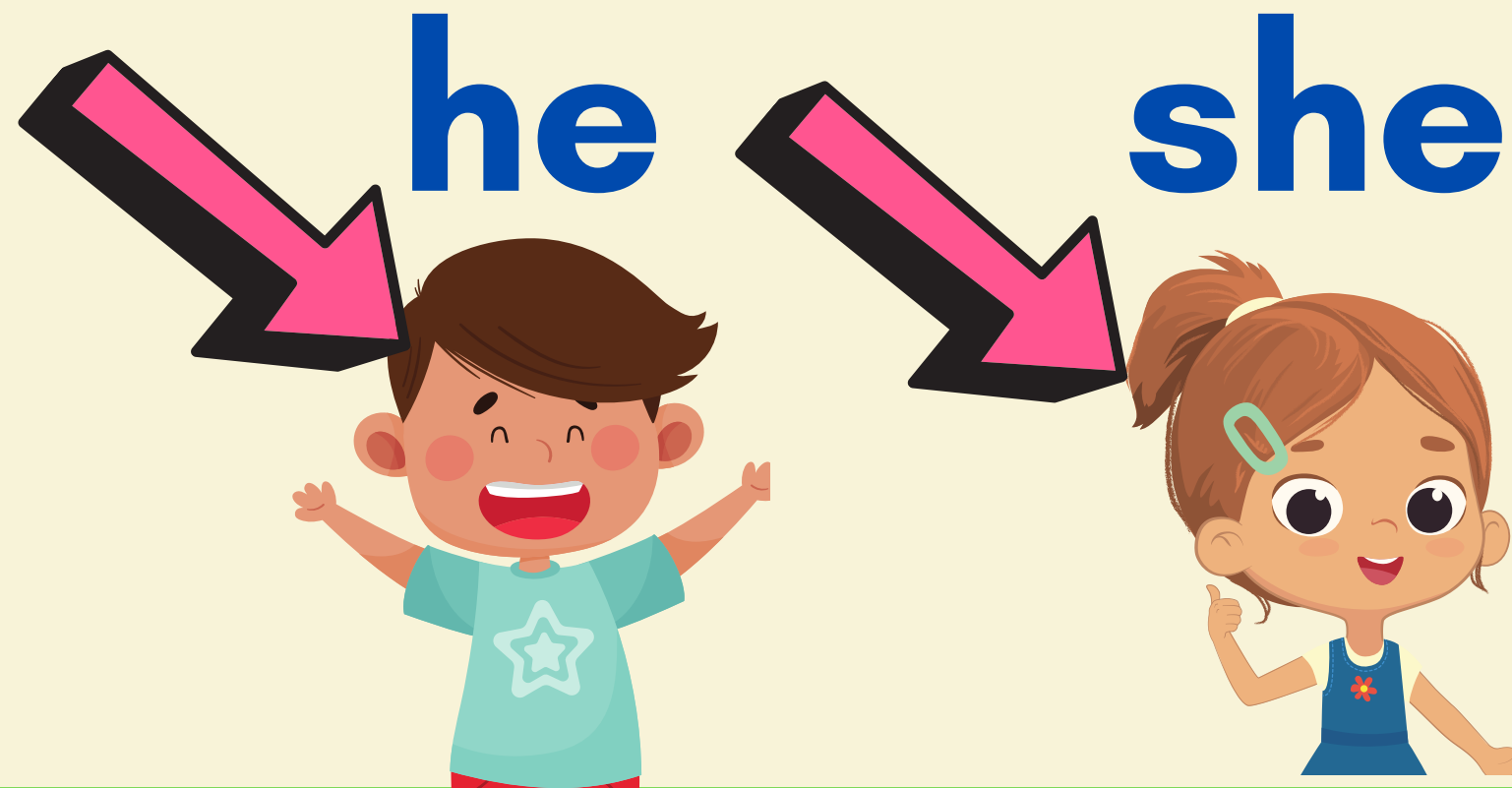


A vibrant children's playroom with a light blue wall. On the wall are large cutouts of a green dinosaur, a yellow giraffe, and a blue elephant. In the center is a yellow table with two blue chairs. To the left is a white table with a colorful polka-dot pattern. The floor is covered with various toys, including colorful blocks, a stacking ring toy, and two teddy bears. A window with white shutters is on the right.

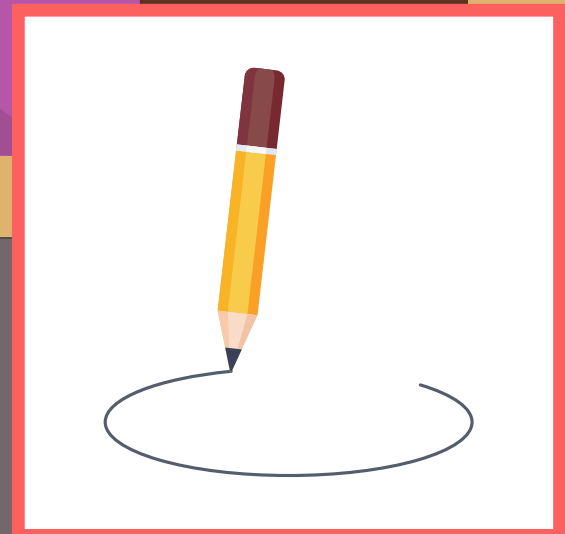
welcome!

LV0 U2 L3

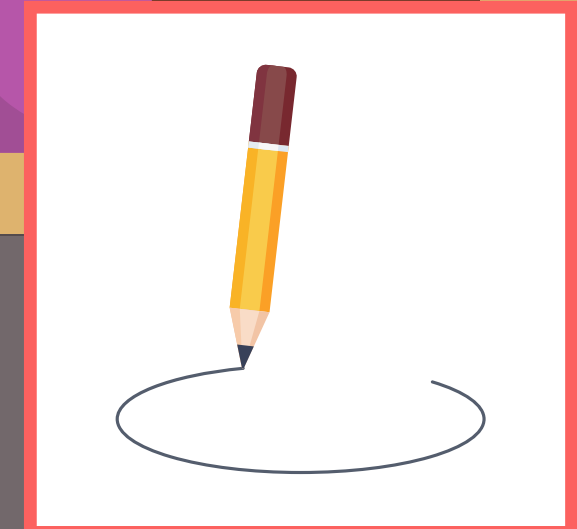
In this lesson:



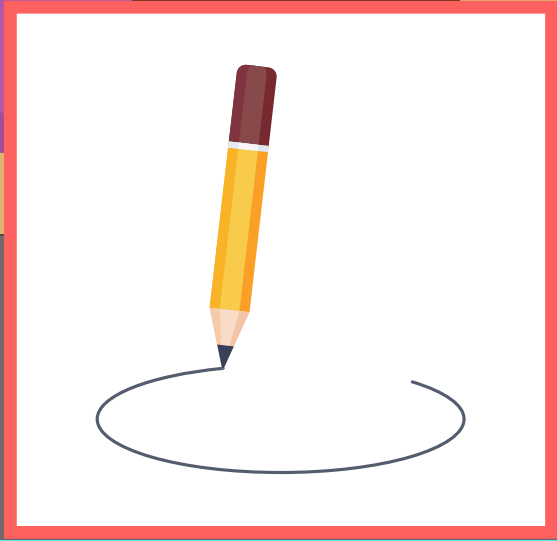
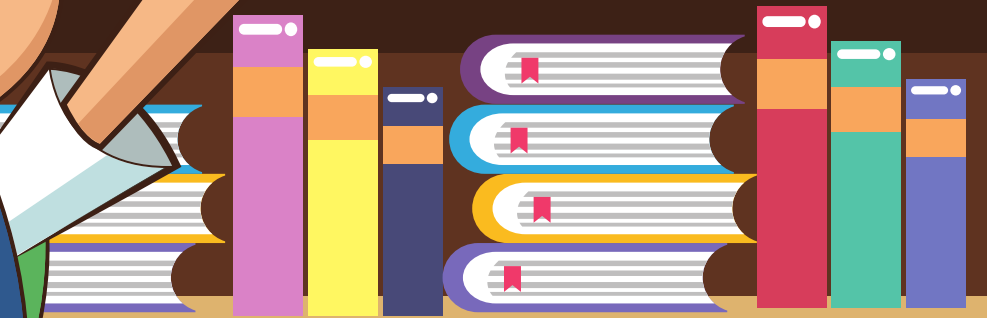
Who is happy?



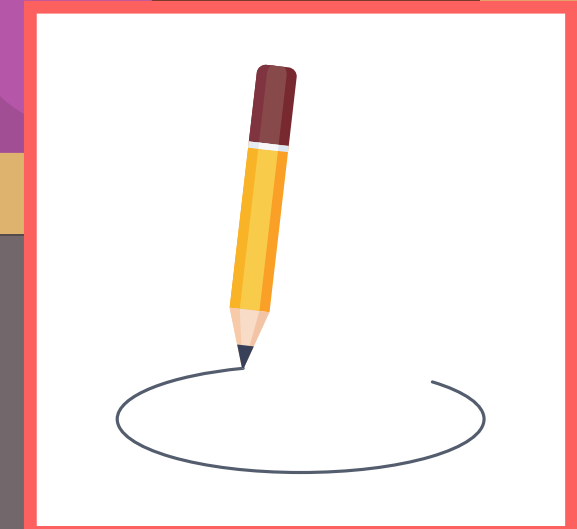
Who is sad?



Who is angry?



Who is tired?



She is

!



happy



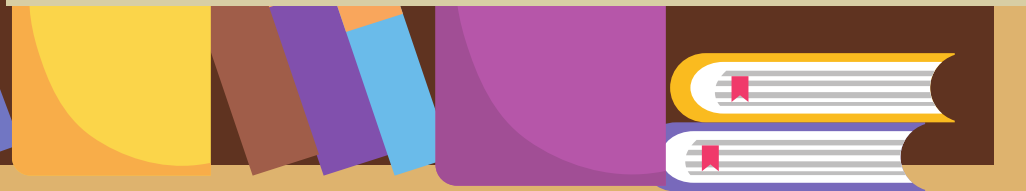
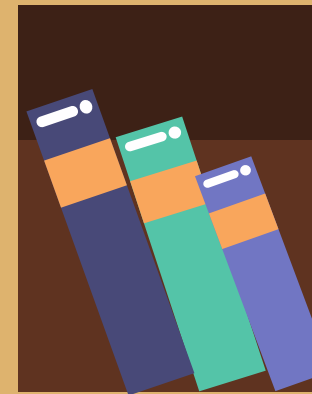
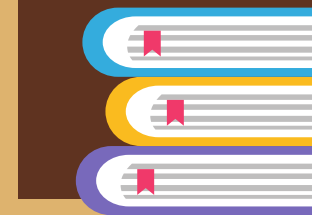
sad



tired



angry



He is

!



happy



sad



tired



angry



He is

!



happy



sad



tired



angry



She is

!



happy



sad



tired



angry



She is

!



happy



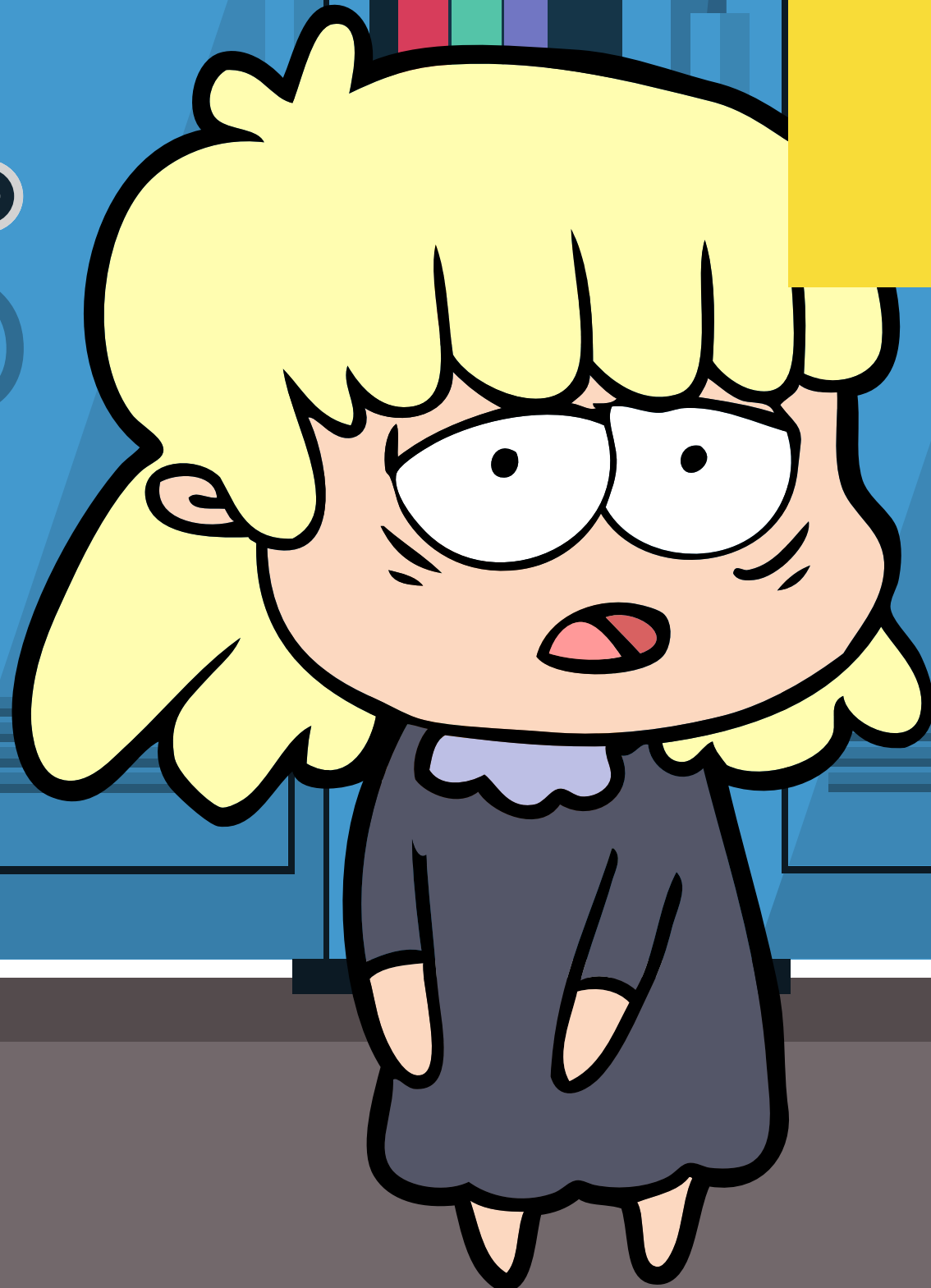
sad



tired



angry



He is

!



happy



sad



tired



angry



He is

_____!



happy



sad



tired



angry



She is

!



happy



sad



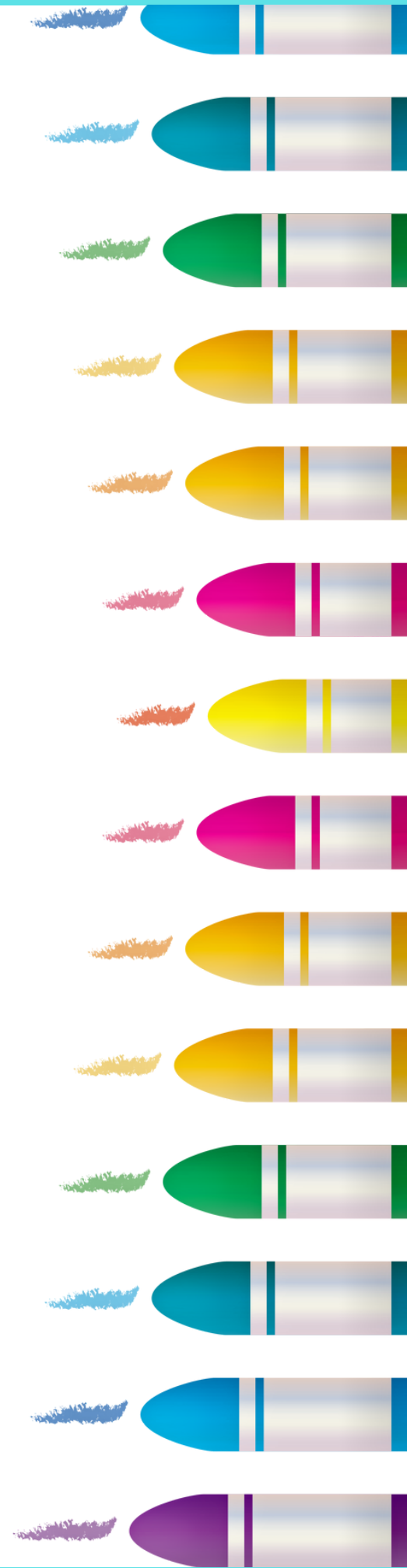
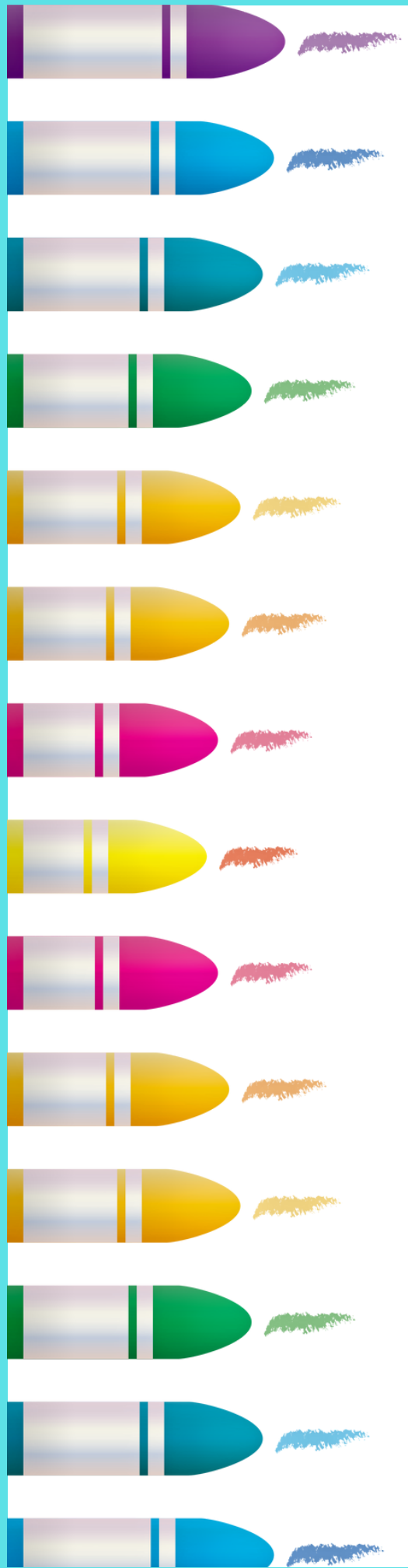
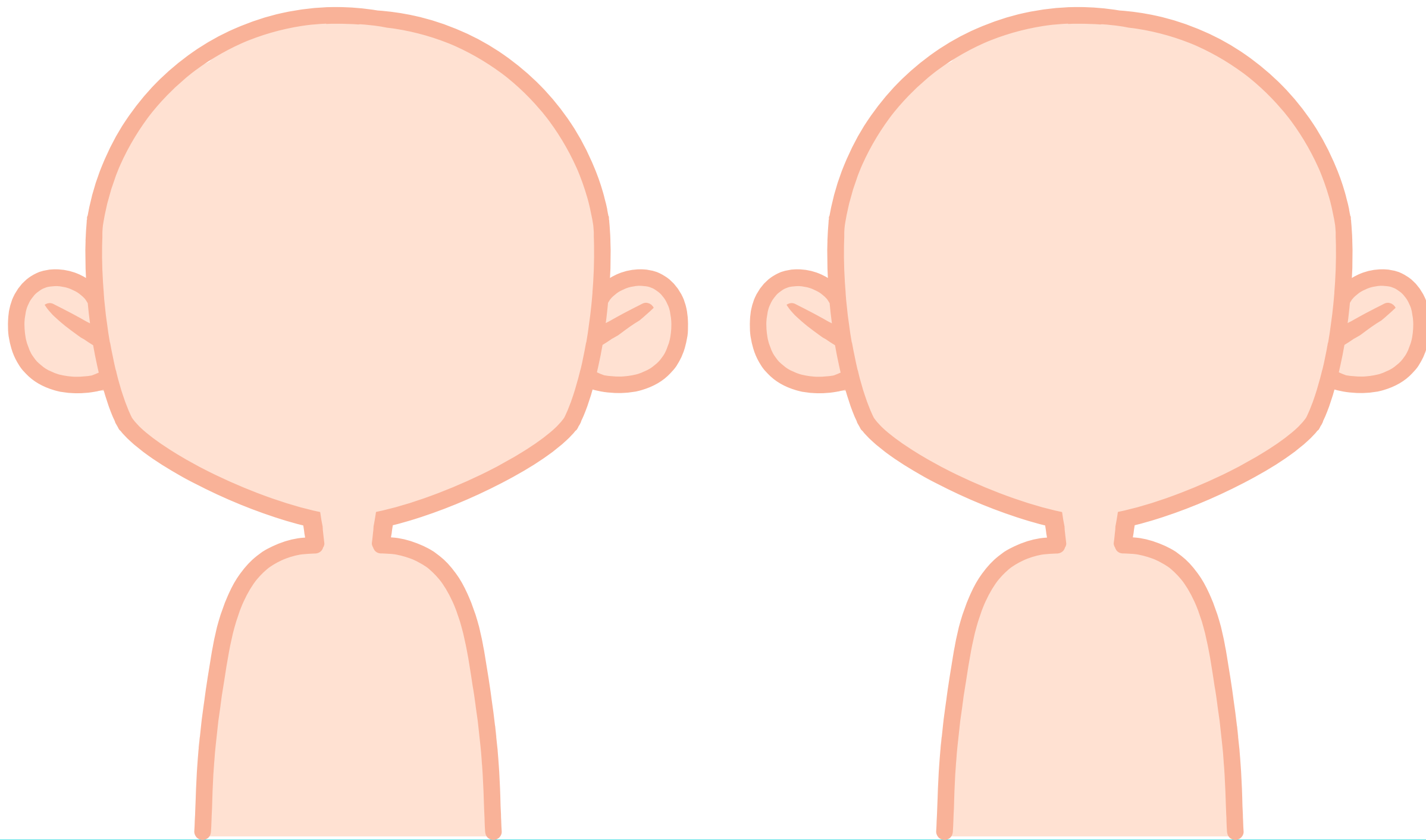
tired



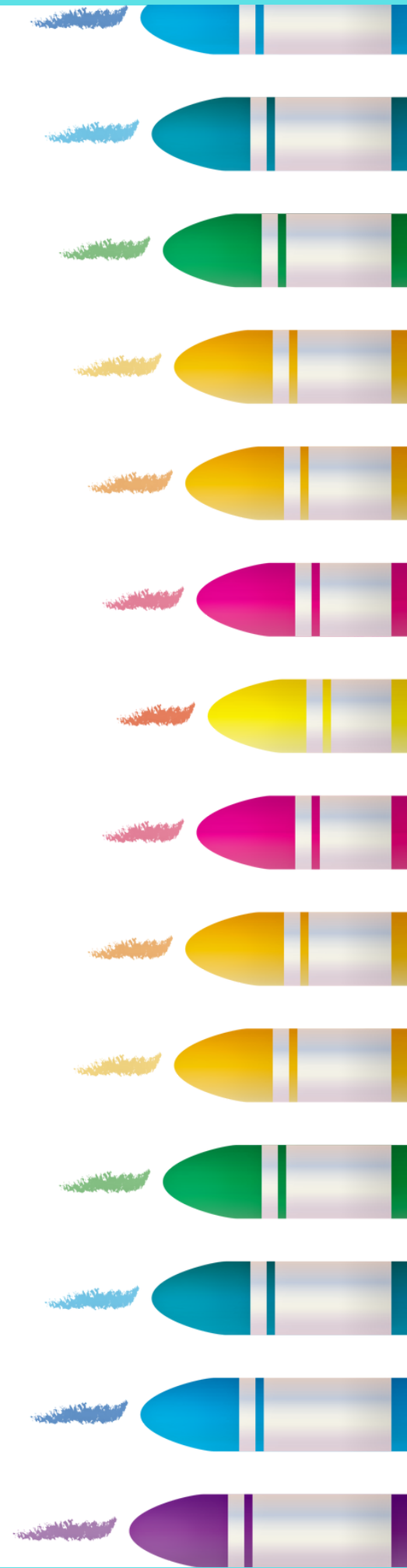
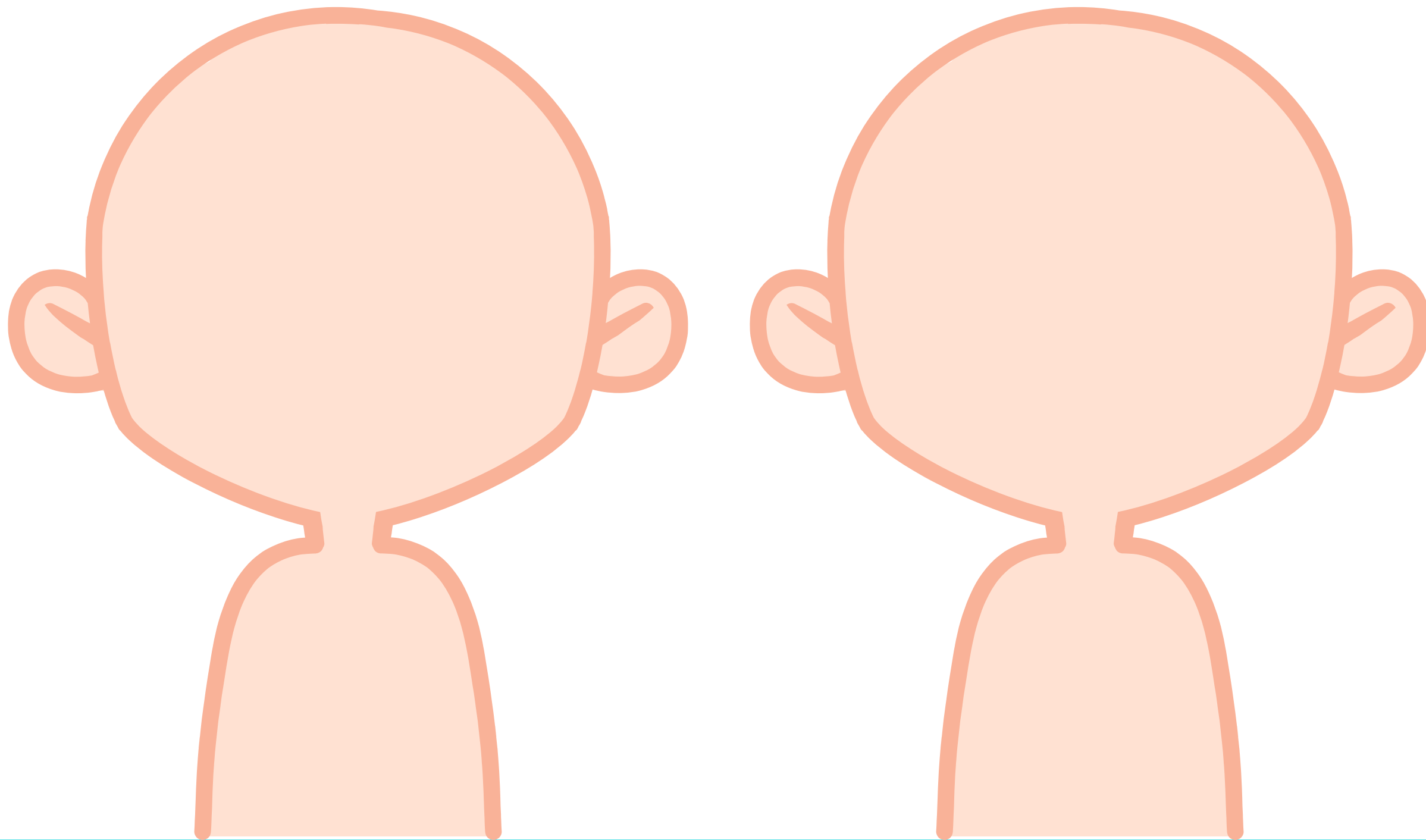
angry



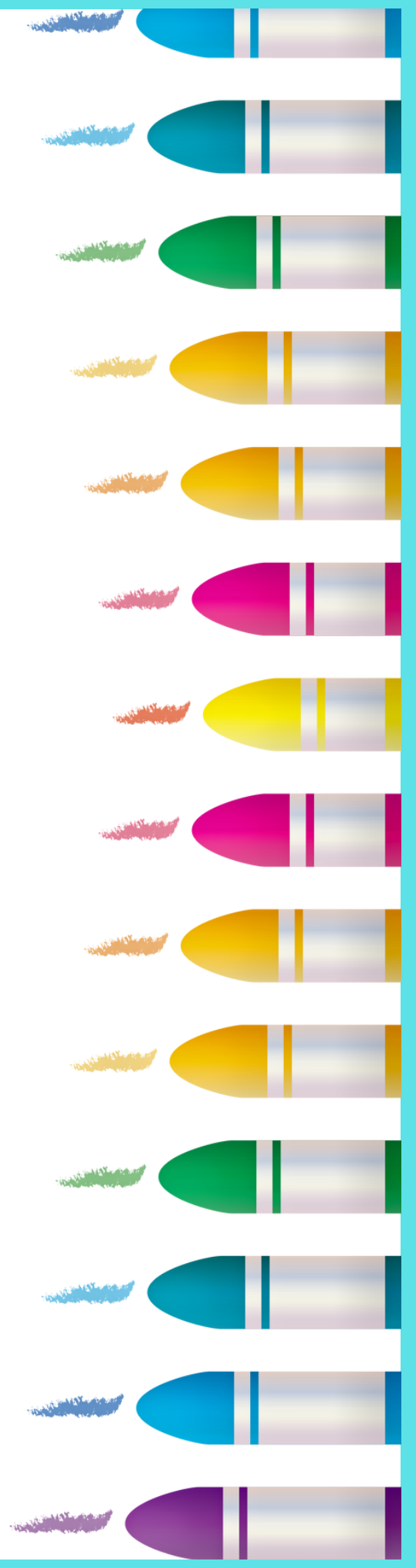
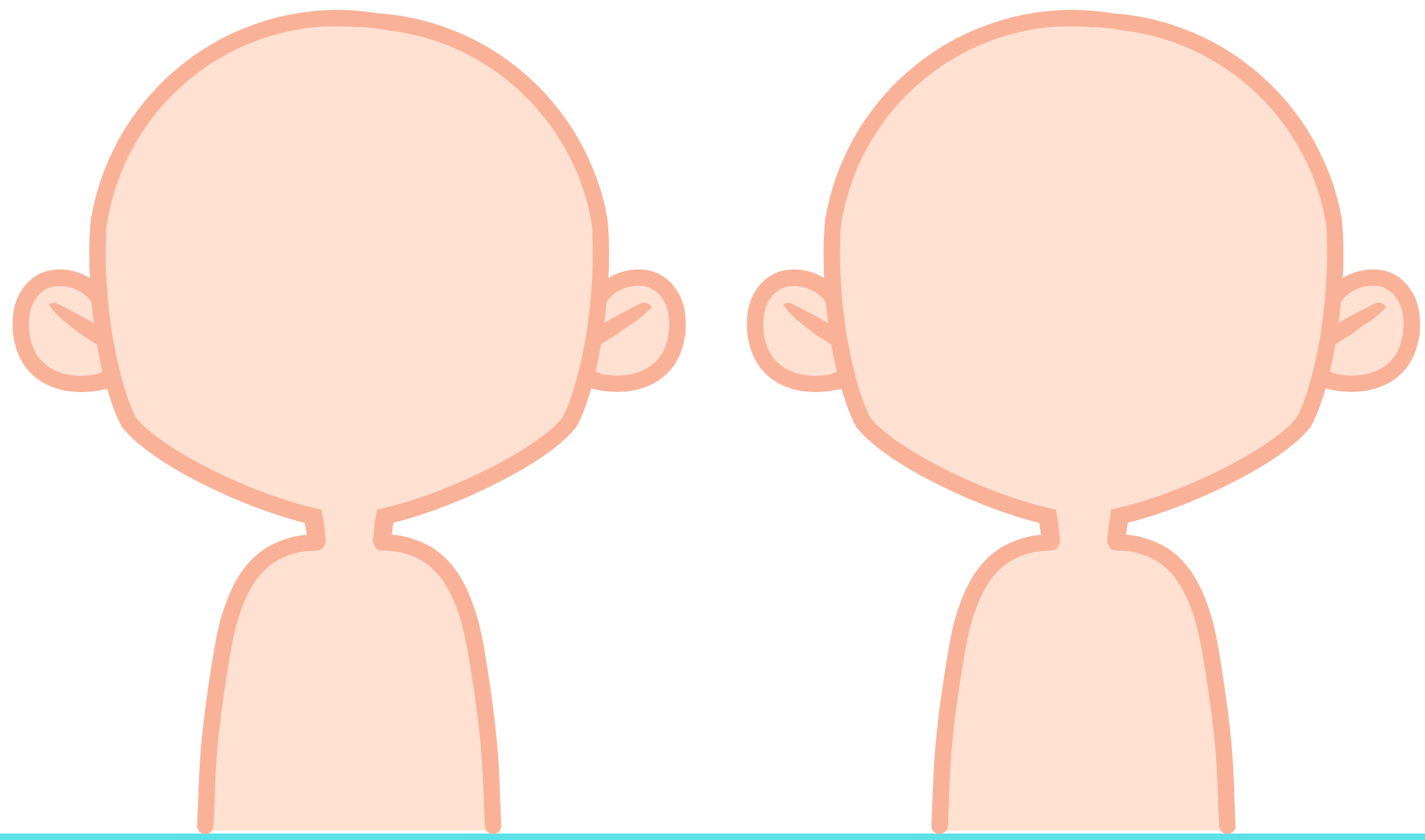
Draw a happy girl and boy!



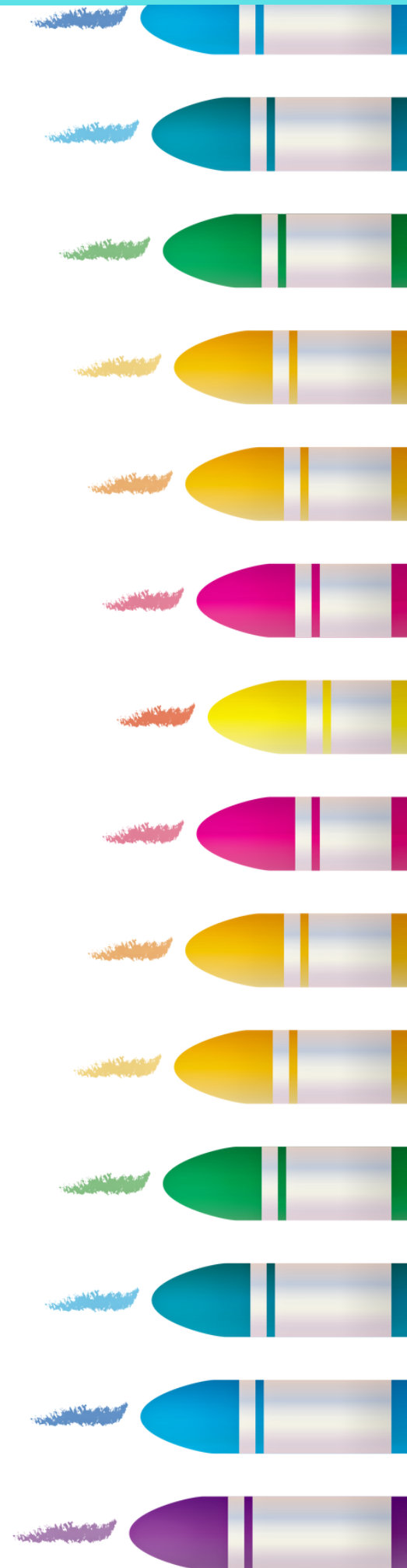
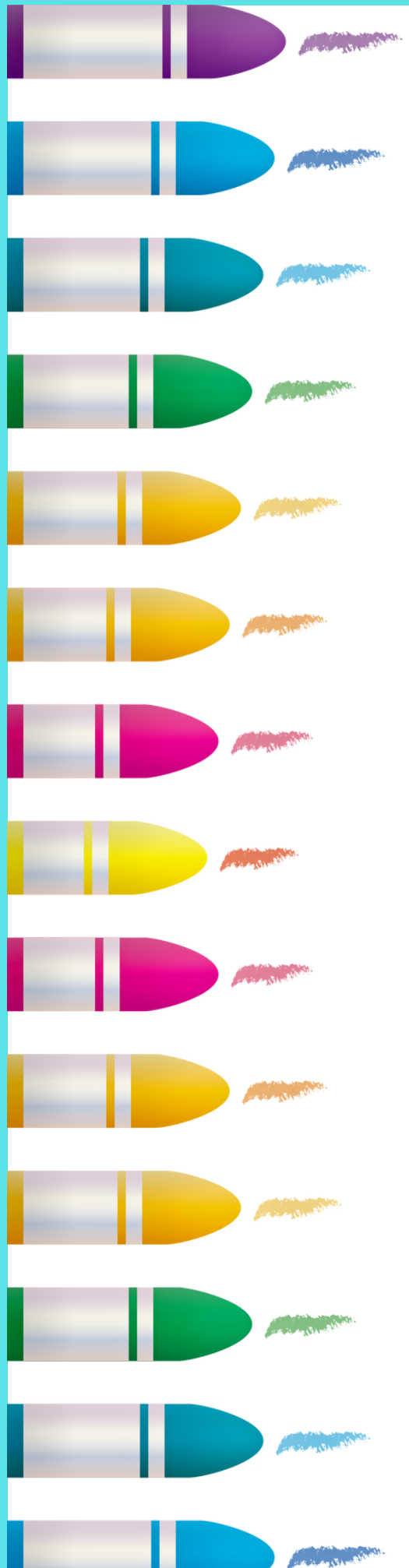
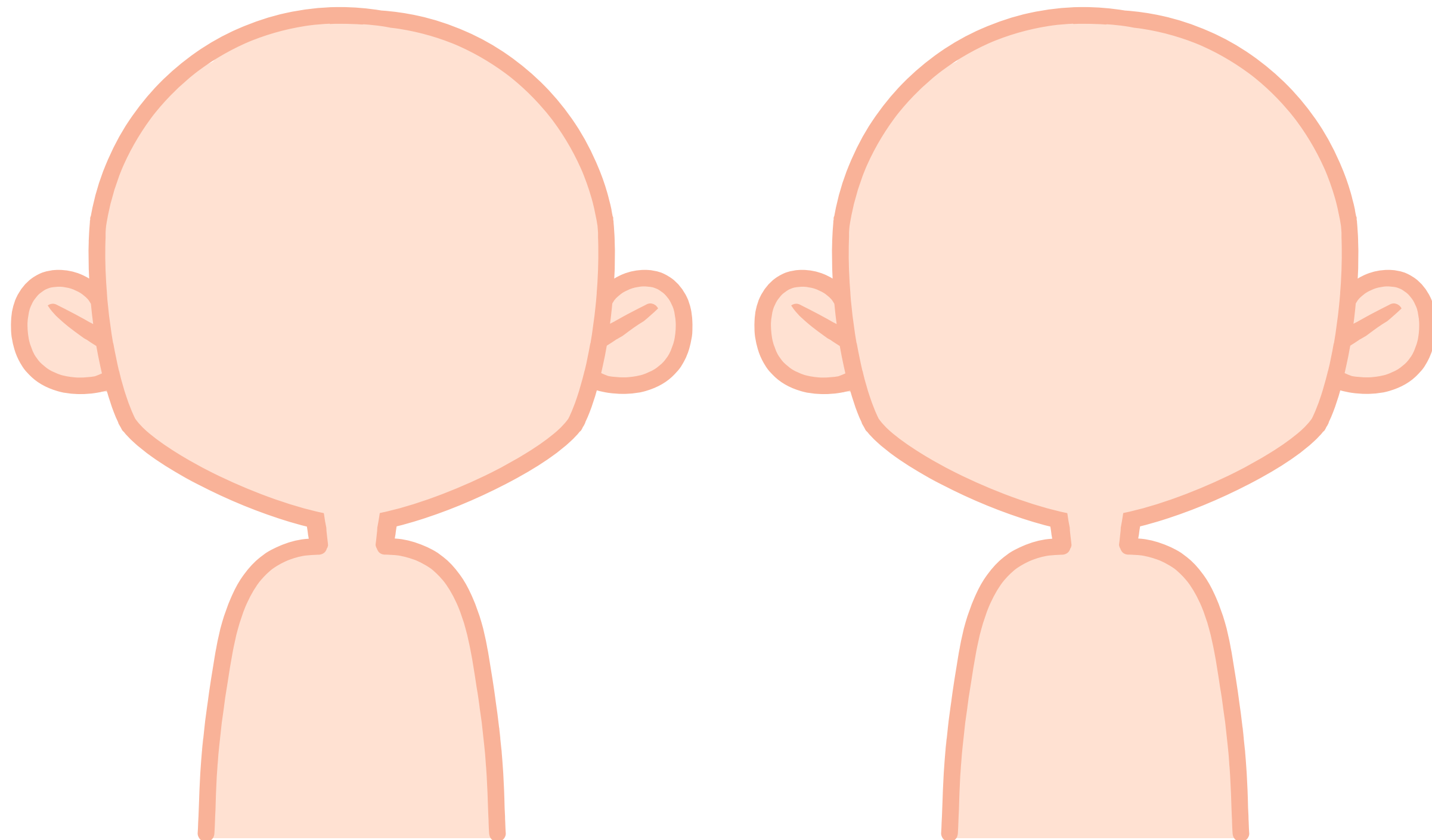
Draw a tired girl and boy!



Draw an angry girl and boy!



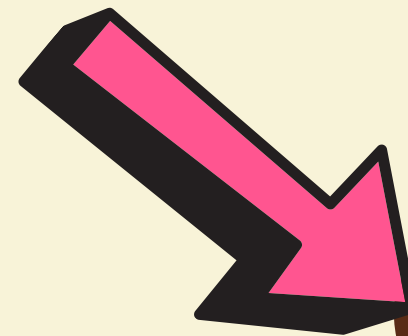
Draw a sad girl and boy!



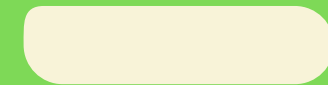
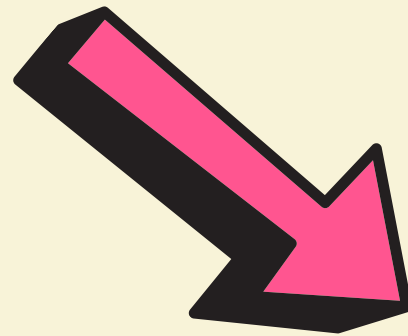
Review:



he



she



Good job!

