

A vibrant children's playroom with a light blue wall. On the wall are large cutouts of a green dinosaur, a yellow giraffe, and a blue elephant. A yellow chair and a small table with colorful legs are in the center. The floor is covered with various toys, including colorful blocks, a stacking ring toy, and two teddy bears. A window with white shutters is on the right.

welcome!

LV0 U2 L1

In this lesson:

happy



sad



angry



tired



I am (happy)!



happy



happy

Let's act happy!



Student



"I am happy!"



sad



sad

Let's act sad!



Student



"I am sad!"



angry



angry

Let's act angry!



Student



"I am angry!"



tired



z z Z

tired

Let's act tired!

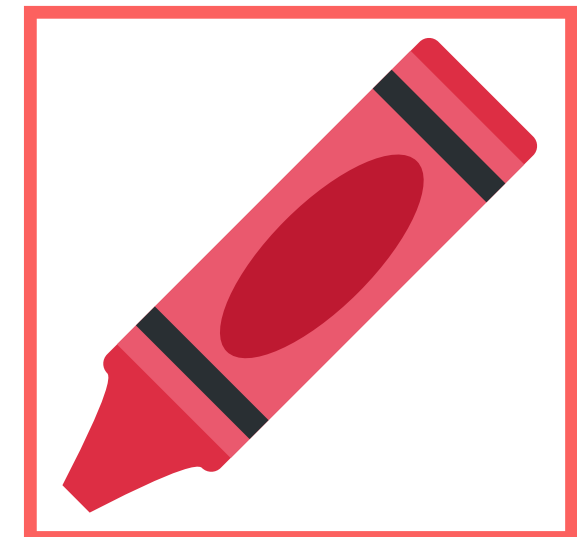
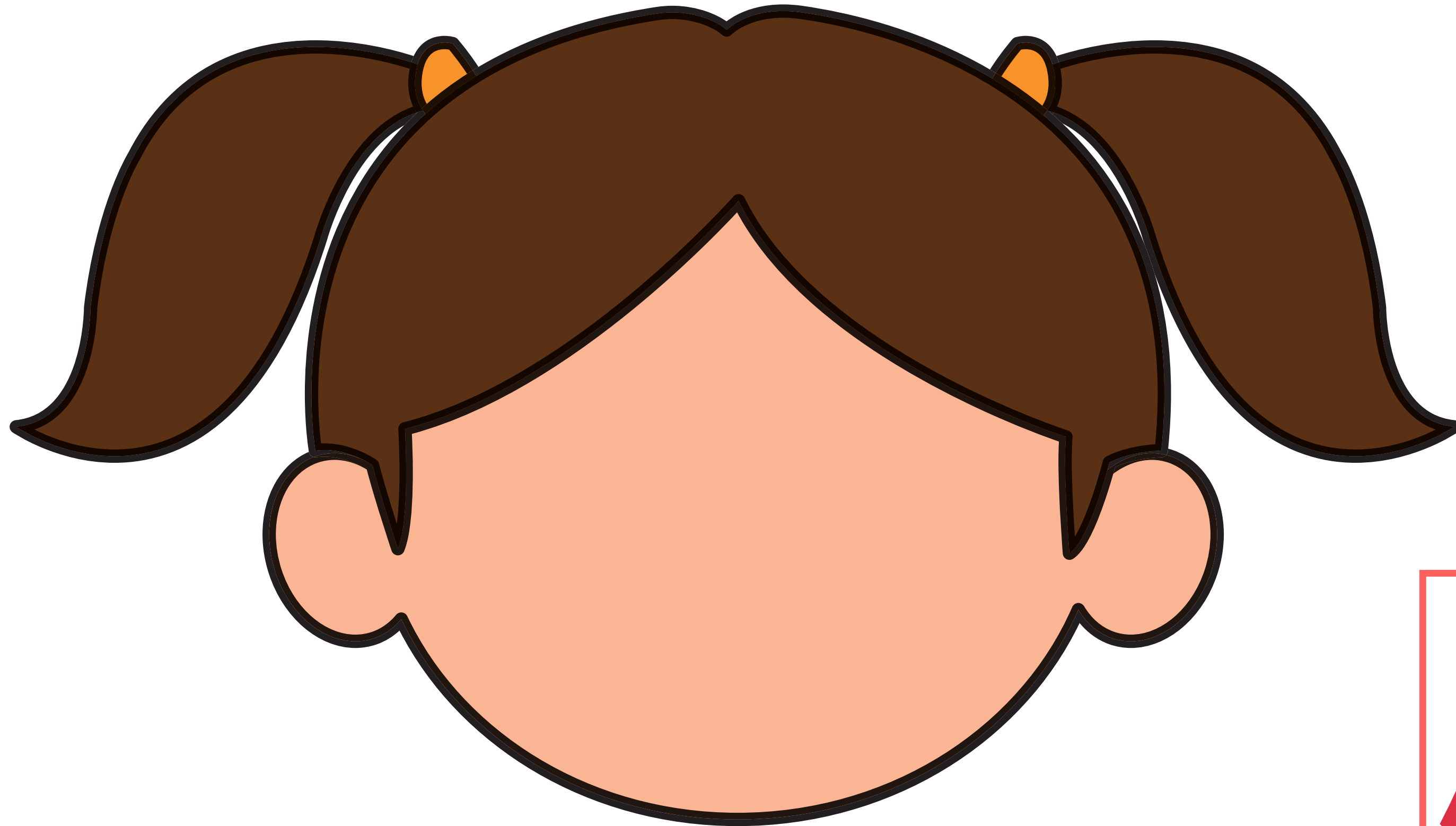


Student



"I am tired!"

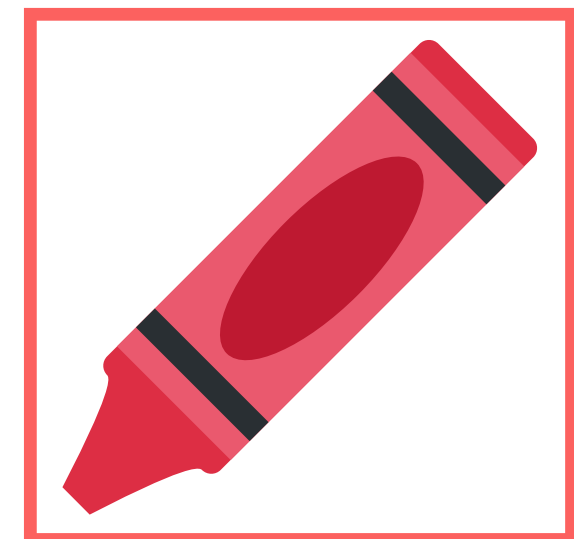
Draw a happy face!



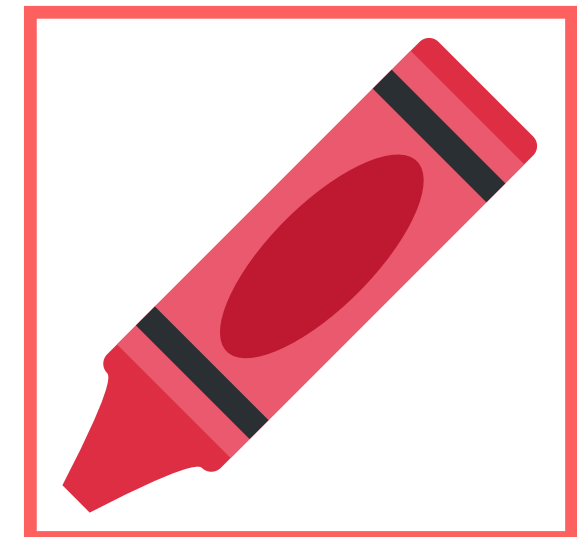
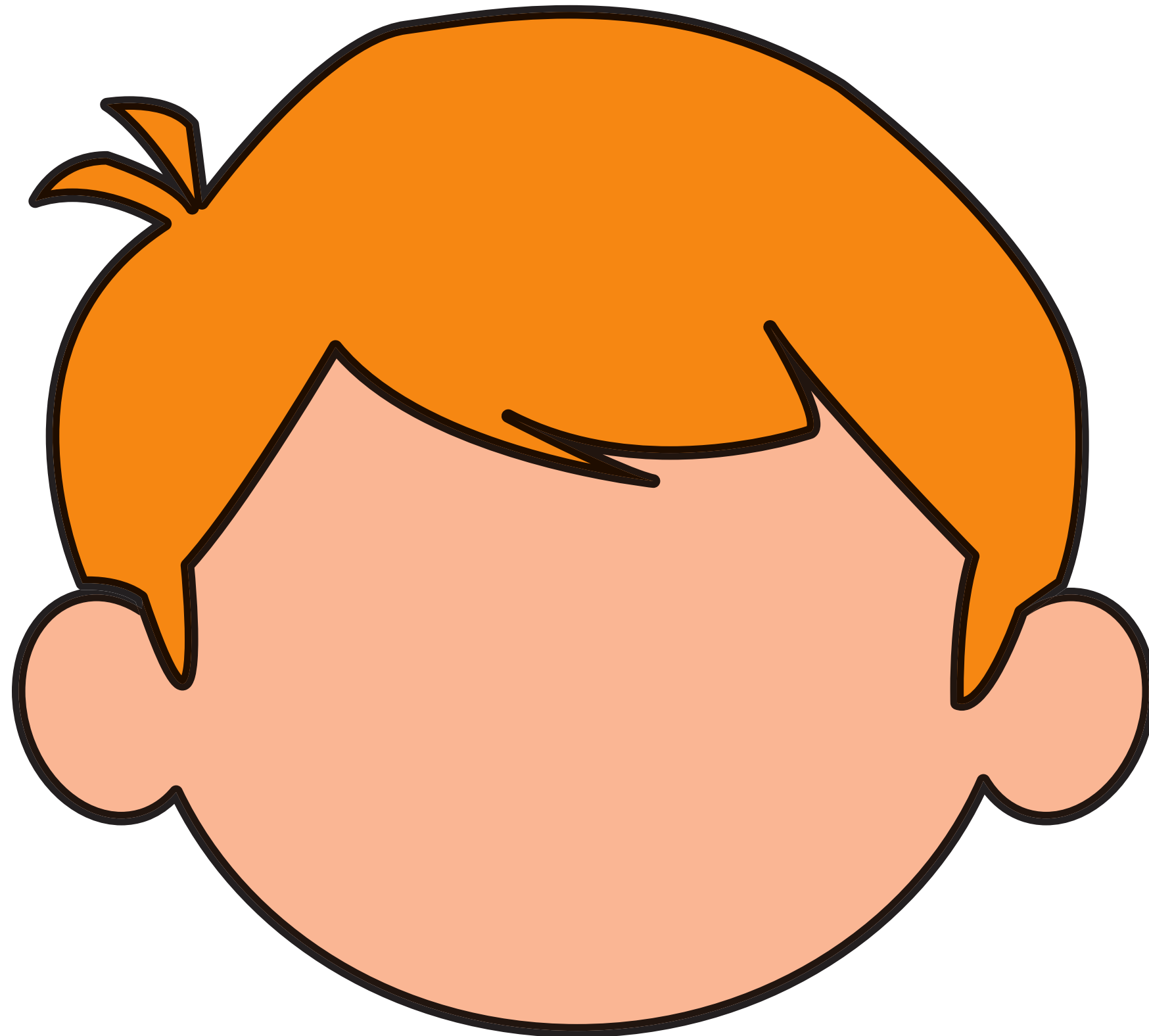
Draw a sad face!



Draw an angry face!



Draw a tired face!



I am _____.



I am _____.



I am ____.

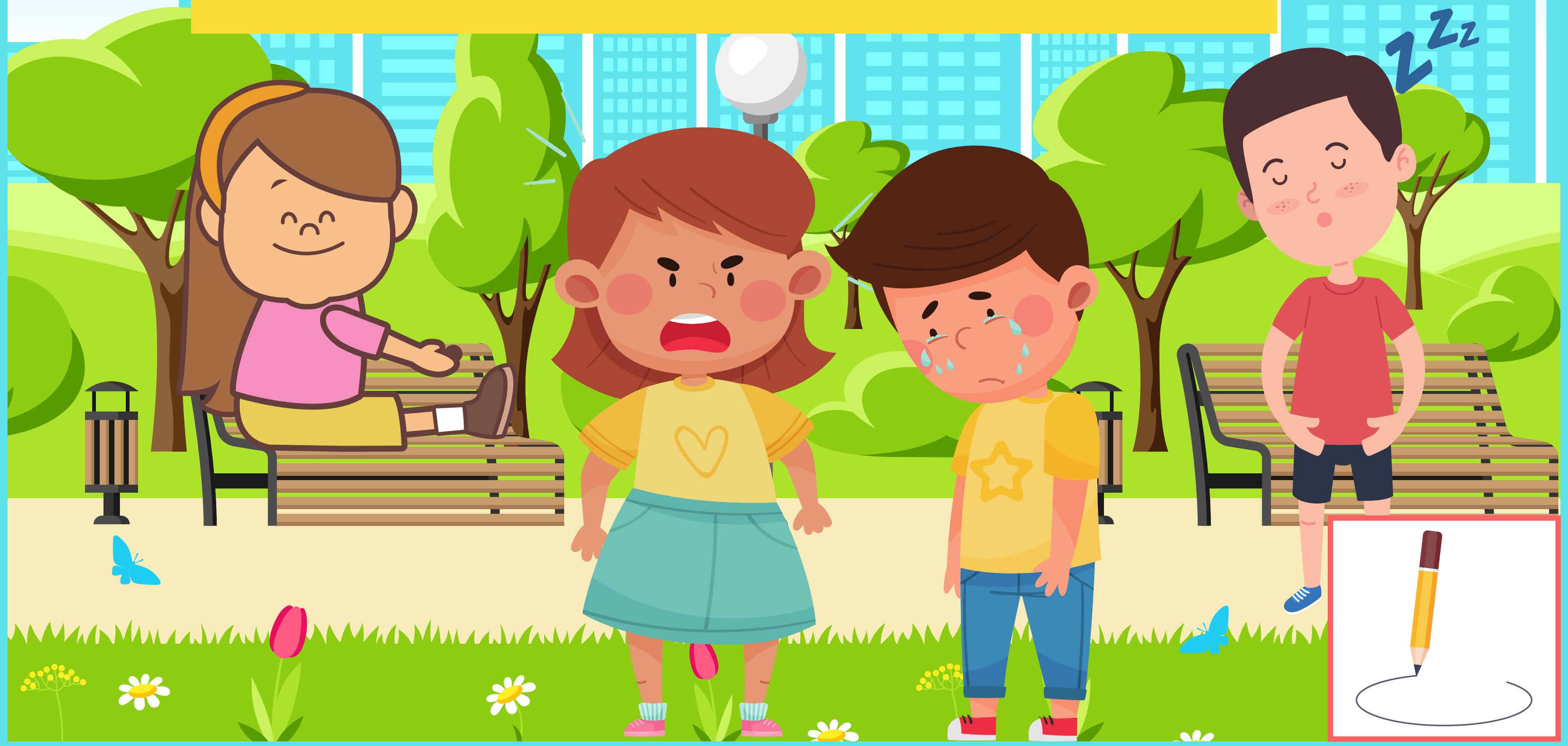


I am _____.

Zzz

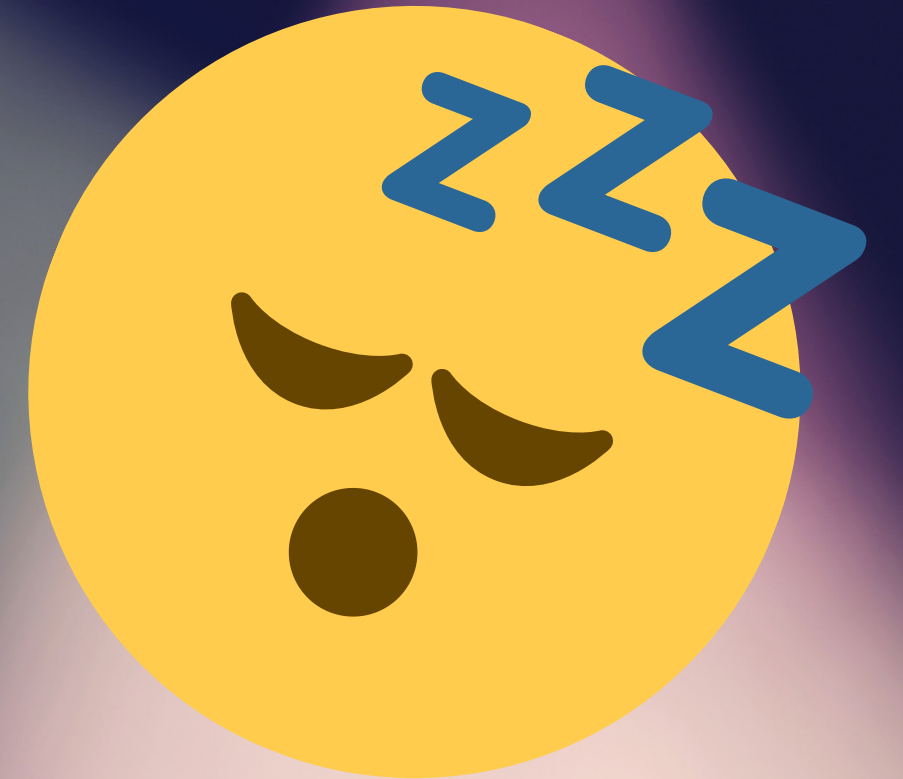


Who is happy / sad / angry / tired?





I am ____.



Student



In this lesson:

happy



sad



angry



tired



I am (happy)!

Good job!

